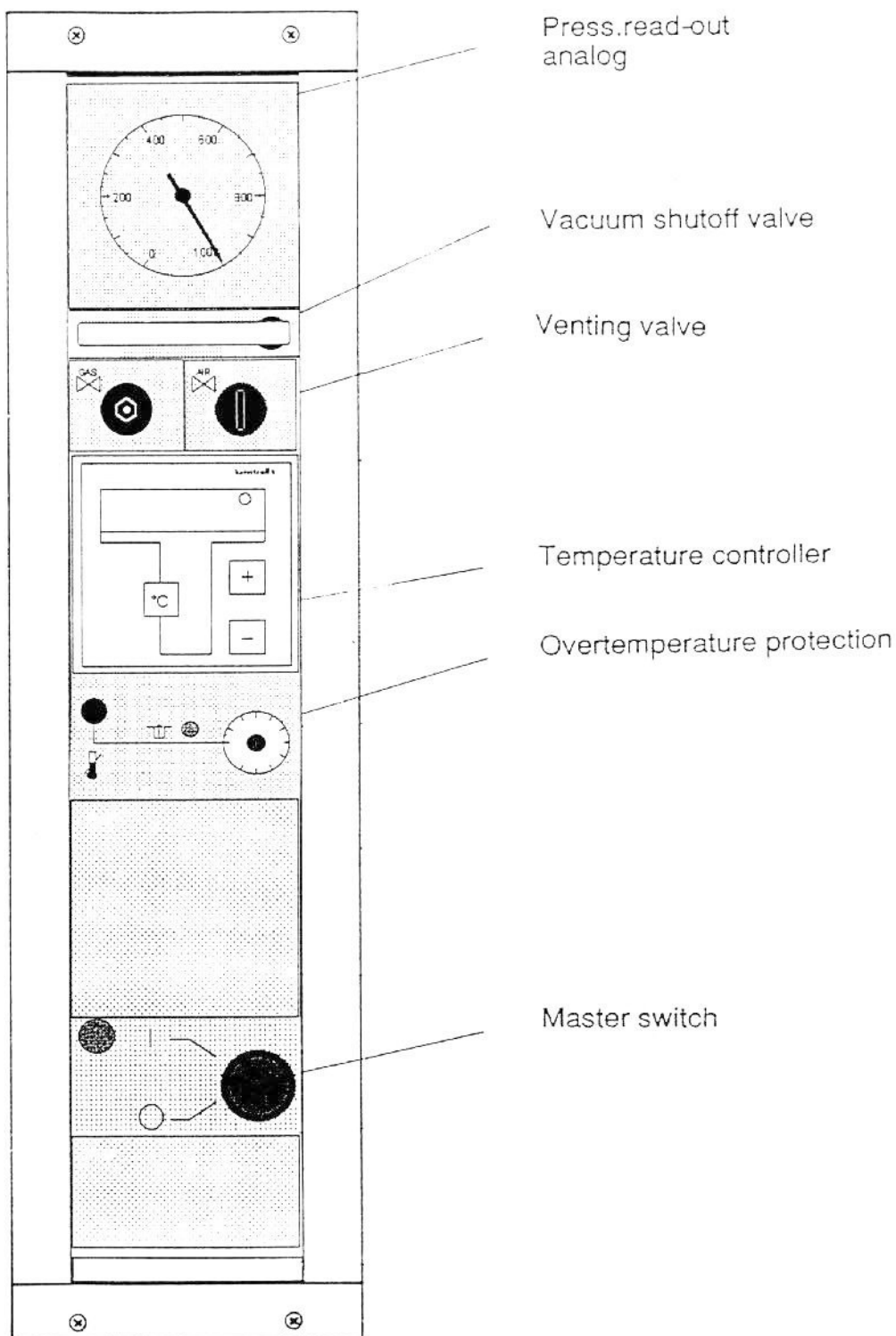
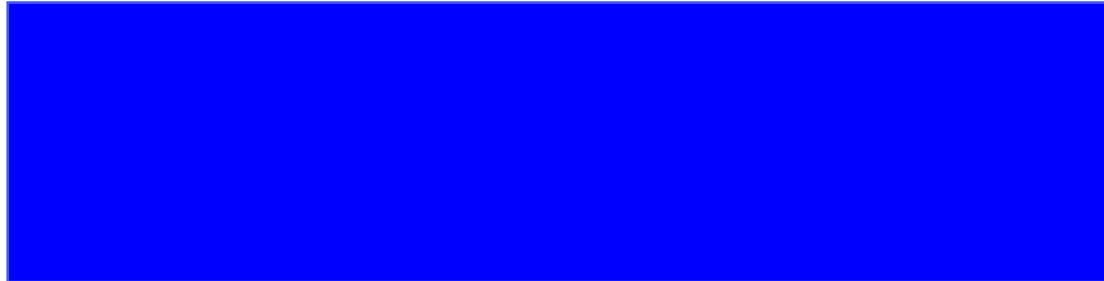
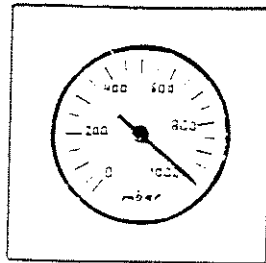


Low Temperature Oven

3. Description of the Unit, pages 8 - 19 Control Panel, Basic Oven Model



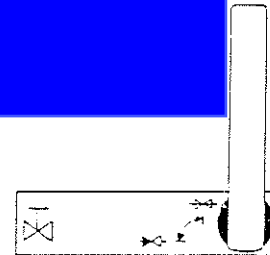
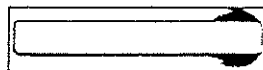
3.1 Press.readout
analog



3.2 Vacuum shutoff valve

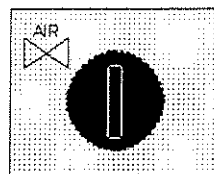
Abb.

cf. Start-Up
page 20



OPEN

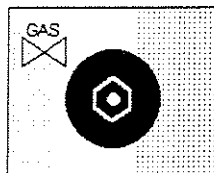
3.3 Venting valve
cf. Start-Up
page 20



CLOSED Vertical mark

OPEN Horizontal mark

3.4 Fine metering
valve
for inert gas
cf. page 17



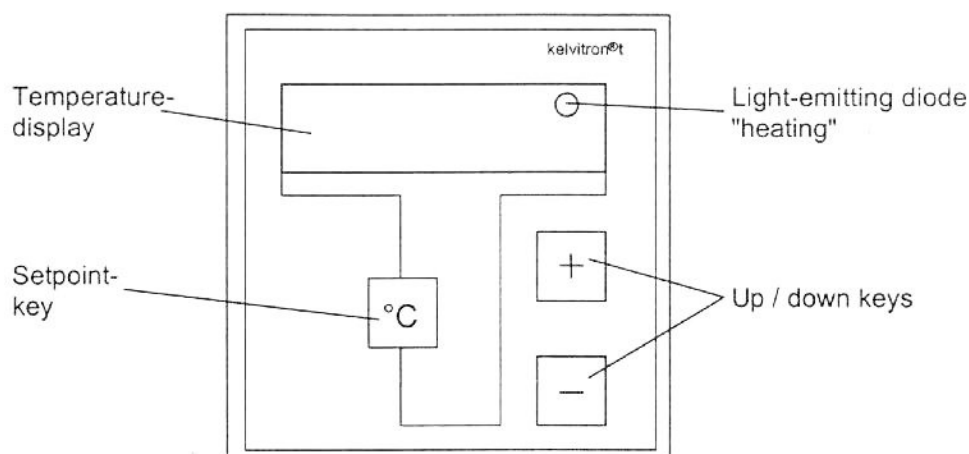
clockwise = CLOSED

counterclockwise = OPEN





Temperature controller

Kelvitron ® t



Start - Up (■ = Input, ► = Display)

- Turn on main switch of the unit.
 - Green pilot lamp lights up.
 - Digital displays light up for approx. 10 sec. (test phase).
 - After the test phase the display will indicate the actual temperature value, controller output indication shows the status of the output: active / non active (pilot lamp).
- Press "°C" key.
 - The actual set point appears on display (flashing).
- Change set point with "+" or "-" key .
 -  If the "+" or "-" key will be pressed longer, the value of set point in the display runs faster:
 - Set points up to 99.9 °C are in 0.1 °C steps adjustable.
 - Set points up to 200 °C are in 1 °C steps adjustable.
- Press "°C" key once more.
 - The desired set point will be stored, the display does not flash, the display shows the actual temperature value.
 - The unit heats up to the desired temperature.
-  If the "°C" key will not be actuated, the old set point is maintained.