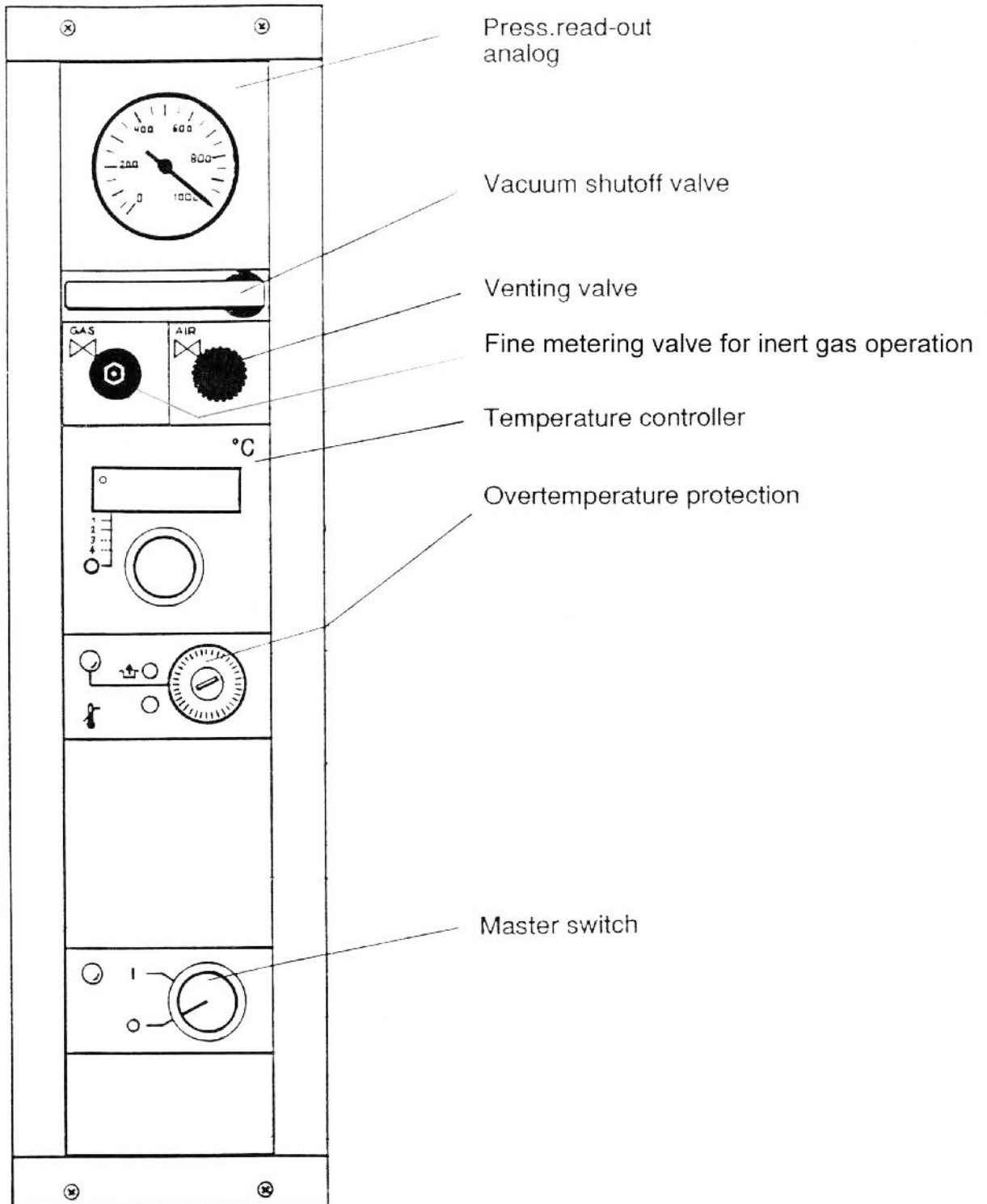
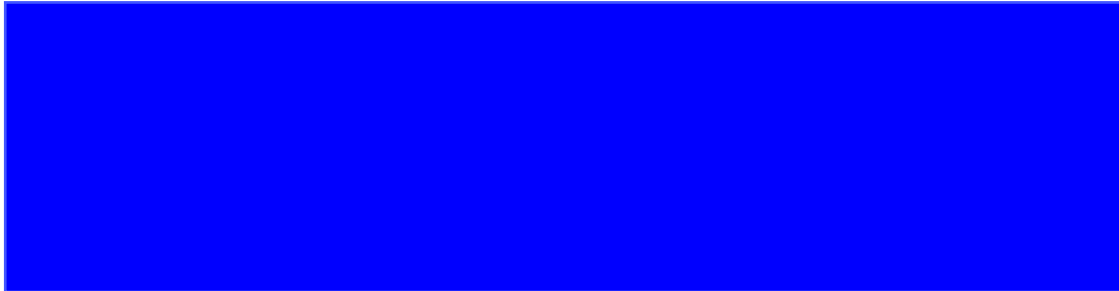
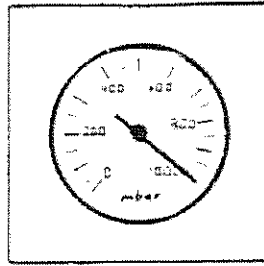


High Temperature Oven

3. Description of the Unit, pages 8 - 19 Control Panel, Basic Oven Model



3.1 Press.readout
analog



3.2 Vacuum shutoff valve

cf. Start-Up
page 19



CLOSED



OPEN

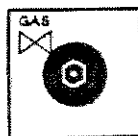
3.3 Venting valve
cf. Start-Up
page 19



CLOSED Vertical mark

OPEN Horizontal mark

3.4 Fine metering
valve
for inert gas
cf. page 16 & 20



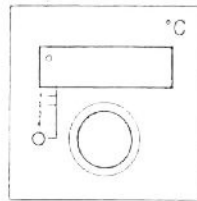
clockwise = CLOSED

counterclockwise = OPEN



3.6 Temperature Control

Electronic.
Temp.controller
"Multi-channel
Digicon"



electron.controller
w.digital display
for temp.range up to
300 °C (400 °C)

Setting:

The electronic controller has a digital display to show the set and actual temperature values of the heated shelves.

Press the control dial and select the desired working temperature. The set value appears in the digital display.

Set points for all heated shelves are set together. Actual values can be polled individually with the poll key.

If you release the control dial, the actual value will appear.

- Shelf 1
- Shelf 2
- Shelf 3 (6130 only)
- Shelf 4 (option)

The LED (top left) indicates that the heating system is "ON".