



<http://www.biodiversitylibrary.org/>

**Proceedings of the Hawaiian Entomological Society.**

Honolulu :Hawaiian Entomological Society

<http://www.biodiversitylibrary.org/bibliography/9697>

**v. 5 (1921-1923):** <http://www.biodiversitylibrary.org/item/40179>

Article/Chapter Title: An interesting new derbid genus (Homoptera)

Author(s): Muir, F.A.G.

Subject(s): Hemiptera, Fulgoroidea, Auchenorrhyncha, planthoppers,  
Delphacidae

Page(s): Page 89, Page 90

Contributed by: Smithsonian Libraries

Sponsored by: Smithsonian

Generated 16 September 2015 1:41 PM

<http://www.biodiversitylibrary.org/pdf4/043251500040179>

This page intentionally left blank.



## An Interesting New Derbid Genus (Homoptera).

BY F. MUIR.

(Presented at the meeting of November 3, 1921.)

### *Anomaladerbe* gen. nov.

Tegmina large, broad, surface undulating. Media forking from radius after the basal median sector (M4). Media with three sectors of four, if the small vein at apex be counted. Clavus not distinctly open, but claval vein extending some distance beyond and in intimate connection with cubitus. The second branch of cubitus (Cu 1a) bent and touching Cu 1 for a short distance; Cu 1 also bent and nearly touching M4, which in turn is bent towards M3. The apices of Sc and R thickened considerably. Hind wing half the length of tegmen, anal area well developed with distinct anal veins, margin of anal area corrugated to form stridulating organ. Head produced dorsally, in lateral view conical, flattened laterally. Vertex nearly upright, pointed at apex, excavate; face linear, lateral carinae meeting together from base to near apex; clypeus with two short lateral carinae at base, no median carina; eyes subreniform; antennae large, slightly longer than face, flat, thin with a slightly thickened margin; no subantennal process. Pronotum very short, upright in middle fitting into base of vertex, no shoulder keels. Mesonotum rounded, wider than long, lateral carinae very faint, but each carina produced in middle into a rounded knob.

This genus holds an anomalous position. By the length of the wing it approaches the Zoraidinae, but the presence of a well developed anal area and anal veins prevents it from being placed in the subfamily. In this respect it is like *Symidia* Muir. The clavus is not distinctly open, and so it should be placed in the Cenchreini, but the bending of the cubitus and M4, and the formation of false cross-veins parallel to the margin places it in the Otiocerini. In that tribe it comes next to *Platocera*, but is distinguished from it by the short wings, enlarged apices of subcosta and radius, the greatly elongated head, the two small knobs on the mesonotum and the incom-

### *Anomaladerbe pembertoni* sp. n. Figures 1, 2, 3.

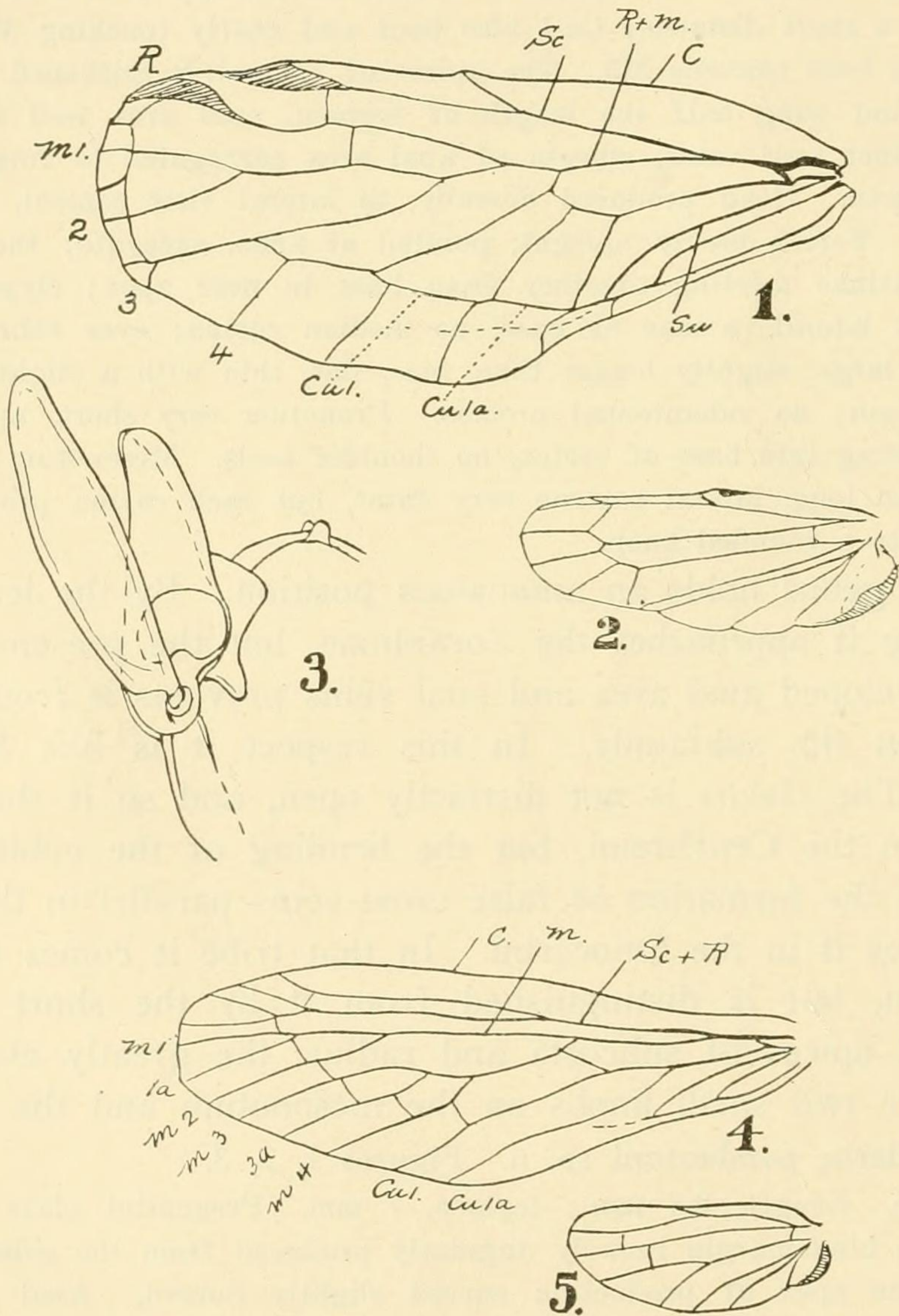
Female. Length, 2.8 mm.; tegmen, 7 mm. Pregenital plate broader than long, hind margin broadly angularly produced from the sides to the middle, the apex of production curved slightly dorsad. Anal segment broader than long, apex broader than base, truncate sinuate. Yellowish; legs lighter; antennae, head and base of mesothorax tinged with red; basal abdominal tergites red. Tegmina and wings slightly opaque, veins yellow, basally tinged with red; a slight infuscation along the veins in apical half of tegmina.



plete opening of the clavus and the arrangement of the cubitus.

Described from one female from Lami, Viti Levu, Fiji (C. E. Pemberton, 1920). Type in H. S. P. Experiment Station collection No. 1002.

The tegmen and wing of *Symidia flava* Muir is figured for the first time. It holds the same position in the Cenchreini as *Anomaladerbe* does in the Otiocerini (figures 4, 5).



#### EXPLANATION OF FIGURES.

1. Tegmen of *Anomaladerbe pembertoni*.
2. Wing of *Anomaladerbe pembertoni*.
3. Lateral view of head and pronotum of *Anomaladerbe pembertoni*.
4. Tegmen of *Symidia flava*.
5. Wing of *Symidia flava*.