

理學博士 松村松年 著
農學博士

日本通俗昆蟲圖說

第四卷

膜翅目・双翅目・有吻目之部



Prof. Dr. S. Matsumura

Illustrated Common Insects of Japan. Vol. IV

Hymenoptera · Diptera · Rhynchota

1 9 3 2

Shunyodo

第十九圖

1. ウシガメ (雄) *Alcimocoris borealis* Dist. (椿象科) (Pentatomidae)

暗色，觸角の基部黄色，頭頂の一紋，複眼間の一紋，中央の二縦條，前胸背の前縁，兩側，中央の二紋及び縦條竝に稜狀部の二紋は淡黄褐，腿節は末端を除き暗色。これは沖繩には少なからざるも，本邦には稀なり。

期 節——八月—十月（椿象は多く成蟲にて越年す）。

食 物——不明。

分 布——本州，九州，沖繩。

2. ナナホシキンガメ (雌) *Calliphara excellens* Burm. (椿象科)

金綠色，斑紋黑色，觸角黑色，前翅の前縁は黒藍色，脚は赤褐，腿節の末端及び脛節は黒藍色，跗節は黑色。これは沖繩に少なからず。

期 節——八月—十月。

食 物——不明。

分 布——沖繩，臺灣，支那，印度。

3. ヒメマルガメ (雄) *Coptosoma biguttulum* Motsch. (椿象科)

黒色，觸角黄色，末端の二節黒褐，稜狀部の基部に二黄紋を具ふ。これは荳科植物に普通なる種類にして，時に大小豆に大害を加ふることあり。

期 節——七月—十月。

食 物——荳科植物。

分 布——日本全土。

4. アカステキンガメ (雄) *Poecilocoris lewisi* Dist. (椿象科)

金綠色，紋は黄褐，少しく紫色を帯び，頭頂の二縦條，複眼間の内側及び觸角は黑色，後者は少しく紫色を帯び，體下は黄褐，胸側，氣門，脚等は金綠色。これは本邦には稀なるも，臺灣には少なからず。

期 節——八月—十月。

食 物——不明。

分 布——本州，九州，臺灣。

5. クロツマルガメ (雄) *Eysarcoris melanocephalus* F. (椿象科)

黄白，第四(基部を除き)及び第五觸角節黑色，前胸背の前縁にある二紋，稜狀部の基部にある大紋及び末端は紫黑色，稜狀部の基部に黄白の小紋を具へ，膜質部は灰白，體下は紫黑色，體側は黄白，黒紋を列ぬ。これは雑草間に少なからず。

期 節——八月—十月。

食 物——雑草。

分 布——北海道，本州，支那。

6. アラクサガメ (雄) *Nezara antennata* Scott (椿象科)

綠色，觸角第三，四，五節の末端は黑色，第二，三，四，五腹面節の外縁に各一點あり。これは禾本科植物上に捕へ得べし。

期 節——七月—十月。

食 物——禾本科植物。

分 布——本州，四國，九州。

7. レウキスシラホシガメ (雌) *Eysarcoris lewisi* Dist. (椿象科)

暗灰色，少しく紫色を帯び，頭紫黑色，觸角黄色，第四節の末端及び第五節黑色，稜狀部の基角に各一黄白紋を具へ，膜質部は暗黄，體下紫褐色，脚黄色。これは菊科植物の雑草間に普通なり。

期 節——七月—十月。

食 物——雑草。

分 布——北海道，本州。

8. オホキンガメ (雄) *Chrysocoris grandis* Thunb. (椿象科)

橙赤色，黒紫紋を具へ，觸角，脚，胸下及び腹は黑色，腹の中央にある二紋及び尾端は紅色。これはクチナシ，センダン，アブラギリに少なからず。臺灣にてはセンダンの大害虫なり。

期 節——八月—十月。

食 物——センダン，クチナシ，アブラギリ。

分 布——日本全土，沖縄，臺灣，支那，印度。

9. ハナダカガメ (雌) *Bolbocoris reticulata* Dall. (椿象科)

暗灰色，觸角及び口吻は赤褐，前者は細く，後者は基部にて黄色を呈し，稜狀部の兩側に各一黄白點を具へ，中央に淡色の一縦條を裝ひ，全面にある黒褐の網狀紋は餘り判然せず，脚黑色，跗節は赤褐。これは北海道に産せざるも，本州には地方的に普通なり。

期 節——八月—十月。

食 物——雑草。

分 布——本州，四國，九州。

10. シラホシムラサキガメ (雄) *Menida violacea* Motsch. (椿象科)

紫黑色，觸角黑色，頭，前胸背の前縁，兩側，稜狀部の末端，腹背の兩側紋，脚竝に體下は黄色，脚に小黑點を密布し，第二腹面節より黄刺を出す。これは雑草間に少なからず。

期 節——八月—十月。

食 物——雑草(菊科植物)

分 布——本州，西比利亞。

11. シラホシガメ (雌) *Eysarcoris ventralis* West. (椿象科)

灰黄，頭黑色，少しく藍色を帯び，觸角は黄色，第三，四節は暗色を帯び，前胸背の前縁に近き兩側に黒紋を具へ，側縁は白色，稜狀部の兩側に黄白紋を裝ひ，末端に黒紋あり，腹は黑色，兩側は灰白，脚は淡黄，跗節は黒褐。これは菊科植物の雑草間に普通なり。

期 節——八月—十月。

食物——雜草。

分布——北海道，本州，支那。

12. エゾアヲガメ (雌) *Palomera angulosa* Motsch. (椿象科)

綠色，觸角は黒褐，基部は綠色，膜質部は黒褐，體下淡黄綠，尾端は赤褐を帯び，雌には四突起を具へ，氣門は黑色。これは菊科植物の雜草間に普通なり。

期 節——七月—十月。

食物——雜草。

分布——北海道，本州。

13. シロヘリヂガメ(シロヘリガイタ) (雌) *Sehirus niveimarginatus* Scott (椿象科)

黒藍色，觸角，頭，口吻，體下及び脚は黑色，前胸背の兩側及び半翅鞘の前縁は細く黄白，各口吻節の基部は灰白，各跗節の基部は黄褐。これは本邦稀ならざるも，その食草は判然せず。多くは地上を歩行し，時に石下，倒木下に發見せらる。

期 節——七月—十月。

食物——不明。

分布——本州，九州，沖繩。

14. ハネナガアヲガメ (雌) *Plautia stali* Scott (椿象科)

綠色，觸角黄色，第一，三，四節の末端に近き一紋並に前胸背の兩側にある一縦條は黑色，半翅鞘は赤褐，前縁は綠色，膜質部は黄色を帯び，その基部は濃色，腹側紋は黑色，脛節の末端及び跗節は黄色。これは雜草間に捕へ得べし。

期 節——八月—十月。

食物——雜草。

分布——本州，九州。

15. ツヤマルガメ (雌) *Brachyplatys subaeneus* West. (椿象科)

光澤ある黑色，少しく紫藍色を帯び，觸角及び脚は黄褐，前中兩胸背の兩側及び稜狀部の周圍は黄褐，腹面側は黄色。これは沖繩及び臺灣に産するも多からず。

期 節——五月—十一月。

食物——不明。

分布——沖繩，臺灣，支那，馬來，印度。

16. スコツトガメ (雄) *Menida scotti* Jak. (椿象科)

暗綠，後半は紫褐，頭頂板の兩側は平行す，觸角黑色，第三節の末端，第四節の兩端及び第五節の後半は黄白，前胸背の側縁は黄白，稜狀部の末端は黄色，半翅鞘は紫色を帯び，膜質部に暗色紋あり。これは雜草間に捕へ得べし。

期 節——七月—十月。

食物——雜草。

分布——北海道，本州，朝鮮，西比利亞。

17. クロガメ (雄) *Scotinophara lurida* Burm. (Podops)(椿象科)

黒色、少しく紫色を帯び、前胸背の前縁及び中央の両側に各一突起あり、脛節及び跗節は赤褐。これは有名なる稻の害蟲にして、殊に四國、九州地方に多し。

期 節——八月—十月。

食 物——稻、その他禾本科植物。

分 布——本州、四國、九州、臺灣、支那、印度。

18. マルガメ (雌) *Coptosoma punctissimum* Mont. (椿象科)

黄褐乃至黒褐、黒點を密布す、觸角は黄色、稜狀部は稍四角形、脚は黄色。これは大小豆の害蟲にして、時に大害を加ふ。

期 節——七月—十月。

食 物——豈科植物。

分 布——本州、四國、九州。

19. フチヒゲガメ (雌) *Dorycoris baccarum* L. (椿象科)

灰褐、少しく紫色を帯び、觸角黒色、各節の基部及び第一節は黄色、腹部の両側は黒色と黄色との斑をなす。これはネギ、ゴマ、ゴバウに普通なり。

期 節——七月—十月。

食 物——ネギ、ゴマ、ゴバウ。

分 布——日本全土、朝鮮、滿洲、支那、西比利亞、歐洲、印度。

20. アカステガメ (雄) *Graphosoma rubrolineatum* West. (椿象科)

赤色、頭に二個、前胸に六個、稜狀部に四個の黒縦條あり。これはネギ、ニンジン、バウフウ、ゴバウ等に普通なり。

期 節——八月—十月。

食 物——菊科、葱科その他種々の植物。

分 布——日本全土、朝鮮、支那、西比利亞。

21. ヨコツナデガメ (雄) *Adrisa magna* Uhl. (椿象科)

黒色、觸角の第三、四節は黄褐、膜質部は黄褐、脈は判然せり。これは地上を歩行する種類にして、又石下、倒木下に捕へ得べし。

期 節——七月—十月。

食 物——不明。

分 布——本州、臺灣、支那、印度。

22. ミヤコキングメ (雄) *Brachyaulax miyakonus* Mats. (椿象科)

紫藍色、體下金緑、腹の接合膜は橙黄色、基節、轉節、腿節は淡黄褐、觸角は黒褐、第一節の基節は黄色、稜狀部に黒紋あり。これは宮古島に産する普通種なり。

期 節——八月—十月。

食 物——不明。

分 布——沖繩。

23. アカギガメ (雌) *Cantao ocellatus* Thunb. (椿象科)

黄褐，後頭の中央にある縦條，頭の下面，觸角の基部，胸下，脛節，後腿節及び腹面は暗綠，觸角，前胸背の前縁，同八紋等は黑色，尤も斑紋に變化多し。これはアカギの害蟲にして，廣く半熱帯地方に分布す。

期 節——五月—十月。

食 物——アカギ。

分 布——沖繩，臺灣，支那，印度。

24. ルリガメ (雄) *Zicronia coerulea* L. (椿象科)

青藍色，觸角及び口吻は黑色，膜質部は黒褐，口吻太し。これは蝱蝨の血液を吸収して有益なり，嗜んで松蝱蝨を捕食す。

期 節——七月—十月。

食 物——食肉性(蝱蝨を捕食す)。

分 布——樺太，日本全土，朝鮮，支那，西比利亞，歐洲。

25. ミツボシチガメ (雌) *Gnathoconus triguttatus* Motsch. (椿象科)

光澤ある黑色，周圍は白色，觸角少しく褐色を帯び，稜狀部の末端は白色，半翅鞘の中央に近く各一小白紋を具へ，膜質部は黑色，外縁は淡色。これは石下，倒木下に捕へ得べし。その食物は判然せず。

期 節——八月—十月。

食 物——不明。

分 布——本州，四國，九州。

第二十圖

1. ヨツモンガメ (雌) *Urochela jozankeana* Mats. (椿象科)

黄褐，觸角黑色，第四，五節の基部は黄色，頭頂の縦紋は黑色，膜質部は黄褐。これはニレに普通なる種類にして，殊に九月下旬に多し。

期 節——九月—十月。

食 物——ニレ。

分 布——北海道。

2. ムラサキガメ (雌) *Carpocoris pudicus* Poda (椿象科)

黄褐乃至赤黄，少しく紫色を帯び，觸角黑色，第一節は赤黄，前胸の前縁に短かき四黒條を縦走し，稜状部の末端は黄色。これは普通なる種類にして，ニンジン，ネギ等に多し。

期 節——七月—十月。

食 物——ネギ，ニンジン。

分 布——日本全土，朝鮮，滿洲，支那，西比利亞，歐洲。

3. モンキツノガメ (雄) *Sastragela scutellata* Scott (椿象科)

黄緑，觸角緑色，末端の三節は少しく暗色を帯び，口吻，脚，體下は黄色，膜質部は黄褐，基部は暗褐，雌の尾端は鋭角をなして突出す。これは本邦に少なからざるも，その食草は判然せず。

期 節——七月—十月。

食 物——不明。

分 布——本州，九州，臺灣。

4. クサギガメ (雄) *Halyomorpha picus* F. (椿象科)

灰黄若くは灰褐，黄色の稜様紋あり，觸角は赤黄，第三節の末端，第四節の中央及び第五節の大部は黒褐，前胸背の前縁に四黄紋を横列す。これはクサギ，モモ，ナシその他の果樹に普通なるも，北海道には産せず。

期 節——七月—十月。

食 物——クサギその他果樹。

分 布——本州，四國，九州，臺灣，支那，馬來。

5. エビイロガメ (雄) *Gnopsis affinis* Uhl. (椿象科)

暗黄，觸角赤色，第五節の末端は黒褐，第一節は黄色，黒點を散在し，半翅鞘は暗赤黄，膜質部は灰白，脚黄色，脛節及び跗節は赤味を帯び，氣門は黑色。これはススキに普通なり。

期 節——七月—十月。

食 物——ススキ。

分 布——本州，四國，九州。

6. ベニモンガメ (雌) *Elasmotethus matsumurae* Horv. (椿象科)

黄緑，觸角黄色，末端の三節黒褐，但し第五節の基部は黄色，前胸背の前縁に黄色の一條を

横走し、稜状部の末端は細く、基部の中央に淡紅の大紋を具へ、半翅鞘の後縁及び外縁は淡紅色、膜質部に一褐紋あり。雄の尾端の両側は紅色。これはイタヤ、ニレに普通なり。晩秋家屋に飛來するもの多く又、燈火にも飛來す。

期 節——七月—十月。

食 物——ニレ、イタヤ。

分 布——北海道、本州。

7. シロヘリガメ (雄) *Aenaria lewisi* Scott (椿象科)

灰色若くは灰黄、黒點多し、觸角黒色、基部の二節は黄色、前翅の前縁は白色若くは黄白、その内縁に細き黒條を具へ、尾端に六齒を裝ふ。これはススキその他の禾本科植物に少なからず。

期 節——七月—十月。

食 物——禾本科植物。

分 布——本州、四國、九州。

8. キマダラガメ (雄) *Erthesina fullo* Thunb. (椿象科)

黒褐、黄色の小紋を散在す、前肢甚だしく延長し、脛節側扁、腹部の両側及び體下黄色、前翅の膜質部黒色、脚黒色、黄白部あり。これは果樹に普通なり。

期 節——七月—十月。

食 物——ミカン、モモ、サクラ。

分 布——本州、四國、九州、臺灣、支那、印度。

9. ナシガメ (雄) *Urochela luteovaria* Dist. (椿象科)

灰褐、頭暗黄、後頭に三黒紋を具へ、前縁に三黒條あり、觸角は黒色、第四、五節の基節は黄色、前胸背の前縁に近く黒紋を裝ひ、後縁の中央に短黄條を縦走す、前翅前縁の末端及び基部に各一黄紋を具へ、末端には黒紋を裝ひ、脚黄色、黒褐部あり。これはナシ、リンゴに普通にして、廣く分布す。

期 節——八月—九月。

食 物——リンゴ、ナシ。

分 布——北海道、本州。

10. イネガメ (雌) *Aenaria assimulans* Dist. (椿象科)

シロヘリガメ(第二十圖7)に酷似するも、その異なる所は、觸角黄赤、末端に暗色の部分を具へ、前胸背の前方に二黒紋を、稜状部の基部に四黒紋を裝ひ、前胸背及び稜状部に一黄線を縦走し、半翅鞘の両側は黄白、跗節褐色。これはイネその他の禾本科植物に普通なり。主として房州地方に多し。

期 節——七月—十月。

食 物——イネ、その他禾本科植物。

分 布——本州、四國、九州。

11. ハサミガメ (雄) *Acanthosoma labiduroides* Jak. (椿象科)

綠色，觸角黃褐，第三節の末端黒褐，前胸背の兩側突起及び稜狀部の末端は紅色，膜質部は暗褐，雄の尾端に紅色鉋子様の附屬物あり。これはツタウルシに普通なり。

期 節——七月—十月。

食 物——ツタウルシ。

分 布——北海道，アムール。

12. クチフトガメ (雌) *Picromerus lewisi* Scott (椿象科)

灰褐，觸角赤褐，第二，三，四節の末端は黒褐，前胸背の後方兩側に齒狀突起ありて赤黃を呈し，稜狀部基部の兩側紋及び末端は赤黃，各腹節の兩側に各一黒褐紋を具へ，脚は黃赤，口吻は太し。これは蝸蠊を捕食して有益なり。

期 節——七月—十月。

食 物——蝸蠊，螟蛉等。

分 布——樺太，北海道，本州。

13. ウツラガメ (雌) *Aelia fieberi* Scott (椿象科)

黄色，頭長く，象鼻狀をなして少しく下方に曲り，縦條は灰褐。これは稻その他の禾本科植物に多き地方的の種類なり。

期 節——七月—十月。

食 物——イネその他の禾本科植物。

分 布——本州，四國，九州。

14. アヤナミガメ (雄) *Agonoscelis nubila* F. (椿象科)

淡黃褐，觸角，頭頂の四縦條，前胸背の後縁，稜狀部の末端に近き兩側の一紋，半翅鞘の九紋等は黑色，前胸背及び稜狀部中央の一縦條は黄色，脚に黑色部あり。中國地方に普通なり。

期 節——七月—十月。

食 物——不明。

分 布——本州，四國，九州，沖繩，臺灣，支那，印度。

15. セアカツノガメ (雌) *Acanthosoma denticanda* Jak. (椿象科)

綠色，觸角，頭，前胸背の前縁，口吻，體下及び脚は黄色，觸角は第二節を除き暗褐，前胸背の角狀突起は暗色，稜狀部赤褐，末端は綠色，半翅鞘前縁の基部は黄色，腹背は赤色，兩側は黄色，後縁は細く黑色，尾節は赤色，雄にては八字形の突起を裝ふ。これは廣く分布するも，その食草は判然せず。

期 節——八月—十月。

食 物——不明。

分 布——日本全土。

16. キシモフリガメ (雌) *Cantheconidea furcellata* Wolf. (椿象科)

淡黃褐，暗褐の點刻を密布し，第三，四，五觸角節の末端は暗褐，頭頂の縦條は黑色，稜狀部の基部に三黃白紋を具へ，膜質部は黑色，末端は透明，黒紋を裝ひ，腿節の末端及び脛節の兩端は黑色，口吻は太し。これは蝸蠊，螟蛉等を捕食するも餘り多からず。

期 節——五月—十月。

食 物——食肉性。

分 布——沖繩，臺灣，印度，阿弗利加，メキシコ。

17. ナガメ (雄) *Eurydema rugosum* Motsch. (椿象科)

赤色，頭の中央は黒色，觸角及び口吻は褐色，稜状部に三角形の黒紋を具へ，前翅には赤紋あり。これは十字花科植物に普通なり。

期 節——七月—十月。

食 物——十字花科植物。

分 布——日本全土。

18. ツノアヲガメ (雌) *Pentatoma japonicum* Dist. (椿象科)

緑色，點刻多く，金光あり，體下黄褐，觸角赤褐，終りの二節は黄褐，前胸背の角状突起は截斷狀に終り，脚は褐色，跗節淡色。これはニレに普通なる種類なり。

期 節——七月—十月。

食 物——ニレ。

分 布——北海道，本州。

19. クヌギガメ (雄) *Urostylis westwoodi* Scott (椿象科)

緑色，觸角の第二節は暗褐，第三節は黒褐，第四及び第五節は黄色，その末端は黒褐，膜質部の縦脈は暗色，各腹節に一黒點を具へ，脛節の基部及び跗節の末端は黒褐。これは槲斗科植物の害蟲にして，何れの地方にも稀ならず。

期 節——七月—十月。

食 物——槲斗科植物。

分 布——日本全土。

20. トゲガメ (雌) *Carbula humerigera* Uhl. (椿象科)

黒褐，少しく藍色を帯び，觸角暗黄，第四及び五節の大部黒色，五節の基部は黄白，前胸背の兩側及び稜状部の末端は白色，脚淡黄，黒點を散在し，脛節端及び跗節の大部は黒褐。これはノヂワウギクに普通なり。

期 節——七月—十月。

食 物——菊科植物。

分 布——日本全土。

21. ノコギリガメ (雌) *Megymemum tauriforme* Dist. (椿象科)

黒褐，少しく藍色を帯び，觸角は四節，第四節の末端は橙黄色，膜質部は黄色，跗節褐色，腹側に鋸齒狀の凹凸あり。これは九州地方に稀ならざるも，その食草は判然せず。

期 節——七月—十月。

食 物——不明。

分 布——本州，四國，九州。

22. ヨツボシガメ (雄) *Carpocoris fuscispinus* Boh. (椿象科)

ムラサキガメに酷似するも、その異なる所は、前胸背にある突起は稍々圓く、暗色を帯び、前縁近く二乃至四黄紋を横列するにあり。これは萃樹その他楡等の樹液を吸収す。札幌地方に少なからず。

期 節——七月—十月。

食 物——潤葉樹。

分 布——北海道，本州，歐洲。

23. ベニクチブトガメ (雌) *Parastrachia fulgens* Dist. (椿象科)

朱色，紋は黒色，觸角，前胸背の前縁，腹背及び脚は黒色，轉節は少しく赤味を帯び，膜質部は半透明，少しく黄褐を帯ぶ。これは稍太き口物を有し，ツバキ，ネヂキの液汁を吸収す。一種の音を發す。

期 節——六月—十月。

食 物——ツバキ，ネヂキ。

分 布——本州，九州。

24. アヲガメ (雄) *Nezara viridula* L. (椿象科)

綠色，觸角に黒色の部分あり，個體により前胸に灰白紋を裝ふものあり，而してこの紋には變化多し。これは禾本科植物の害蟲にして，殊に稗，粟に大害を加ふることあり。

期 節——七月—十月。

食 物——禾本科植物。

分 布——本州，四國，九州，八丈島，小笠原島，朝鮮，支那，西比利亞，歐洲。

25. トホシガメ (雄) *Lelia decempunctata* Motsch. (椿象科)

暗黄，第二觸角節の末端は暗褐，前胸背の中央に四褐紋を具へ，體下及び脚は黄色。これはニレに普通なり。

期 節——七月—十月。

食 物——ニレ。

分 布——北海道，本州，西比利亞。

第二十一圖

1. ホホヅキヘリガメ (雌) *Acanthocoris sordidus* Thunb. (縁椿象科) (Coreidae)

暗褐，顆粒突起を密布し，觸角に剛毛を，前胸背の兩縁に棘状突起を装ひ，前翅の膜質部は黒色。これはナス，ホホズキ等に普通なり。中國地方に多きも，東北及び北海道には産せず。

期 節——七月—十月。

食 物——ナス，ホホズキ。

分 布——本州，四國，九州，沖繩，臺灣，支那，印度。

2. ナミヘリガメ (雄) *Syromastes marginatus* L. (縁椿象科)

褐色若くは赤褐，觸角太く，第一節甚だ大，平たく，第二節と略同長，第三節は第二節より短，第四節は短小，腹部の兩側は著しく肥大し，稜状部に顆粒を散在す。これはゴバウに普通なり。

期 節——六月—十月。

食 物——菊科植物。

分 布——北海道，本州，西比利亞，歐洲。

3. アシビロヘリガメ (雄) *Leptoglossus membranaceus* F. (縁椿象科)

黒色，第二，三觸角節の中央竝に第四節の末端は橙黄色，頭頂後方にある二紋，頭下の兩側條，前胸背の中央に近き弓状帶，稜状部の兩側及び末端紋，半翅鞘の中央紋その他胸腹に散在せる紋は橙黄色。これは沖繩にありては蕨科植物に普通なり。

期 節——六月—十月。

食 物——蕨科植物。

分 布——沖繩，臺灣，支那，比島，印度。

4. ハラビロヘリガメ (雌) *Homoeocerus dilatatus* Horv. (縁椿象科)

黄褐，體下黄色，黒點を散在す，觸角は赤褐，前翅の中脈上に一黒點を具へ，腹側は双物様に張る。これは萩の如き荳科植物に普通なり。

期 節——七月—十月。

食 物——荳科植物。

分 布——本州，四國，九州。

5. ツマキヘリガメ (雌) *Hygia opacus* Uhl. (縁椿象科)

黒色，黄色の短毛を密生し，各觸角節の基部及び第四節(基部を除き)は橙黄色，後縁に二黄紋を装ひ，稜状部の末端は橙黄色，半翅鞘前縁の中央紋は黄色，膜質部は暗黄褐，各接合膜節の後縁及び跗節黄色。これは雜草間に普通なり。

期 節——七月—十月。

食 物——雜草。

分 布——本州，九州。

6. オホクモヘリガメ (雌) *Anacanthocoris marginatus* Uhl. (縁椿象科)

綠色，觸角紅色，第一節の兩側に黒縦條を具へ，第二，三節の末端竝に第四節の大部は暗褐，頭は灰白，前頭之二紋及び單眼は紅色，前胸背の兩側は細く黒色，半翅鞘は黄褐，少しく綠色を帯び，膜質部は黄褐，體下及び脚の大部黄色。これは禾本科植物にて捕へ得べきも，その數餘り多からず。

期 節——七月—十月。

食 物——禾本科植物。

分 布——本州，四國，九州。

7. ヒメクモヘリガメ (雄) *Paraplesius unicolor* Scott (縁椿象科)

暗黄，綠色を帯び，頭頂に黒色の短縦溝を具へ，單眼は紅色，その前方に八字形の暗色紋を裝ひ，第四觸角節は暗黄，基部前は黄色，基部は黒色，前胸背の兩側縁には黒色線あり，跗節は黒褐。これは竹その他禾本科植物に普通なり。

期 節——五月—十月。

食 物——禾本科植物。

分 布——日本全土。

8. フタモンメクラガメ (雌) *Adelphocoris variabilis* Uhl. (盲椿象科) (Capsidae)

色に變化多しと雖も，普通黄色，少しく綠色を帯び，短毛を密生し，頭黒色，觸角暗色を帯ぶるもの多し，前胸背の中央に二黒紋，前縁及び兩側には褐色紋あり，半翅鞘の内片は黒褐，外片の中央に三角形の黒紋あり。これは雜草間に普通なり。

期 節——五月—十月。

食 物——雜草。

分 布——北海道，本州。

9. クモヘリガメ (雄) *Leptocorisa varicornis* F. (縁椿象科)

黄綠，觸角黄色，體より長く各節の末端は黒色，末端節褐色，基部黄色，膜質部の基部に黒色部を具へ，内片に褐色點刻多し。これは稻その他の禾本科植物に普通なり。廣く半熱帶地方に分布し，北海道には産せず。

期 節——年中。

食 物——禾本科植物。

分 布——本州，四國，九州，沖繩，臺灣，支那，印度，馬來，瓜哇，その他。

10. アツキヘリガメ (雄) *Homoeocerus concoloratus* Uhl. (椿象科)

暗褐，少しく綠色を帯び，體下は黄色，觸角は赤色，第二節の末端黒色，前翅後縁の中央に黒點あり。これは大小豆の如き荳科植物に普通なり。

期 節——六月—十月。

食 物——荳科植物。

分 布——本州，四國，九州。

11. ホリヘリガメ (雄) *Riptortus clavatus* Thunb. (縁椿象科)

赤褐，前胸背兩側に各二突起を具へ，後腿節は膨大し，これに鋭齒を列ぬ。これは荳科及び

禾本科植物に普通なり。

期 節——六月—十月。

食 物——荳科及び禾本科植物。

分 布——本州，四國，九州。

12. シロヘリガイタ (雌) *Aphanus japonicus* Stål (長椿象科) (Lygaeidae)

黒色，第二觸角節の中央赤褐なるものあり，前胸は灰白，前後兩縁は細く赤色，前縁に近く一黒紋を具へ，稜狀部の下方にある二紋，末端竝に半翅鞘は灰白，黒點多し，膜質部は黒色灰白の小紋を散在す，脚に黄色部あり。これは倒木下，石下に捕へ得べし。

期 節——六月—十月。

食 物——雜草(?)

分 布——北海道 本州。

13. ミツギハガメ (雄) *Salda recticollis* Horv. (水椿象科) (Saldidae)

黒褐，頭頂板及びその後方にある横隆起は黄色，觸角短，第一，二節の大半黄色，半翅鞘は少しく藍色を帯び，白紋を散在し，膜質部は暗色，脈黒色，末端白色，脚黄色，腿節の下方及び脛節の兩端は黒褐。これは水潭の近邊に普通なり。小蠅を捕食す。

期 節——年中(冬期を除き)。

食 物——食肉性。

分 布——北海道，本州。

14. オホヘリガメ (雌) *Ochrochira fuliginosa* Uhl. (縁椿象科)

黒褐，第四觸角節の末端は黄色，半翅鞘は黄褐，後腿節は側扁，末端に近く三角形の突起あり。これは本邦最大の縁椿象なるも，その食草は判然せず。

期 節——七月—十月。

食 物——不明。

分 布——本州，九州。

15. エグリゲンバイ (雄) *Monanthia conchata* Horv. (軍配蟲科) (Tingitidae)

暗灰色，頭，觸角，前胸背及び脚は黄色，第四觸角節の末端は黄褐，頭頂，觸角の前方及び複眼は黒色，前胸背の隆起は黄色。これは雜草間に普通なるも，その食草は未だ判然せず。

期 節——六月—十月。

食 物——雜草?。

分 布——北海道，本州。

16. コバネガイタ (雄) *Pamera hemiptera* Scott (長椿象科)

黒色，觸角黄色，第一節の基部，第三節の末端及び第四節の全部は黒褐，稜狀部の末端は黄色，半翅鞘は暗黄，前縁の中央及び末端に褐紋を具へ，膜質部暗色，末端に灰白紋あり。これは草間に普通なり。

期 節——七月—十月。

食 物——雜草。

分 布——北海道，本州，九州。

17. キバネホソヘリガメ (雌) *Megalotoma costalis* Stål (縁椿象科)

黒色，觸角は體長より短。單眼間の一點，頸の兩側紋及び口吻の基部は黄色，中胸背に黄色の一縦條を具へ，半翅鞘は黄色若くは黄褐，基部暗色，腹背の兩側に黄紋を具へ，脛跗兩節の大部は黄色。これは菊科植物上に捕へ得べきも，餘り多からず。

期 節——七月—十月。

食 物——菊科植物。

分 布——北海道，本州。

18. ナシグンバイ (雌) *Stephanatis ambigua* Horv. (軍配蟲科)

黒褐，觸角黄色，前胸背は前縁中央に近く暗色紋を，後半に黄白の三縦條を裝ひ，半翅鞘のX字形は黒褐，脚は淡黄。これはナシ，ツツジに普通なり。

期 節——七月—十月。

食 物——ナシ，ツツジ。

分 布——日本全土。

19. ナミヒラタガメ (雄) *Aradus consentaneus* Horv. (扁椿象科) (Aradidae)

黒色，觸角暗褐，第一節は黄褐，前胸背前縁の兩側は白色，半翅鞘は灰白，外片の後半少しく濃色，その脈褐色，膜質部暗色，基部淡色，尾節白色。これは枯木の樹皮下に發見せらる。

期 節——六月—十月。

食 物——朽木。

分 布——北海道。

20. ヒゲナガガイタ (雄) *Pachygrontha antennata* Uhl. (長椿象科)

暗灰色，第一觸角節の末端黒褐，第三節の上半及び第四節は黒褐，前胸背の中央條は黄色，稜狀部の兩側の各一紋及び末端の短線は黄色，半翅鞘の末端に褐色紋を具へ，膜質部灰白，褐條ありて斷續す。これは肥大せる前腿節を有するを以て食肉性なるを想像し得べし。

期 節——六月—十月。

食 物——食肉性。

分 布——北海道，本州。

21. トコジラミ (雌) *Cimex lecturalius* L. (南京蟲) (床虱科) (Cimicidae)

體は扁平，黄褐，點刻を散在し，前胸背は心臟形，觸角，脚及び口吻は暗褐。幼蟲は白色なるを以て，白布を敷ける床上には發見すること困難なり。これは有名なる吸血蟲にして，目下東京地方にも少なからず。

期 節——年中。

食 物——人血。

分 布——世界共有。

22. アカアシメクラガメ (雄) *Dicyphus lautus* Uhl. (盲椿象科)

黒色，頭頂に一黄紋を具へ，觸角は褐色，第一節の基部及び第三節の基半部は黄色，前胸背

の中央に黄色の環紋を装ひ、稜状部は黄色、四黒紋あり、半翅鞘緑白、内片は赤褐、その基部と外片との限界は黒色、膜質部は透明、末端及び基部に黒紋あり。これは草間に普通なり。

期 節——七月—十月。

食 物——雑草。

分 布——北海道、本州。

23. コヒラタガメ (雌) *Aradus lugubris* Fall. (扁椿象科)

黒褐、前胸背の四縦隆は端直、半翅鞘は灰色、脈は黒色、膜質部は暗灰色、脈の周囲は灰白、前胸の側片及び腹面の後方は黄褐。これは枯木の樹皮下に捕へ得べし。

期 節——七月—十月。

食 物——朽木。

分 布——北海道、本州、西比利亚、歐洲。

24. トサカゲンバイ (雌) *Stephanatis globulifera* Mats. (軍配蟲科)

黒褐、頭頂板は赤褐、觸角黄色、前胸背の隆起は黄色、半翅鞘に×字形の黒褐紋を具へ、脚は黄色。これは雑草間に普通なり。

期 節——七月—十月。

食 物——雑草。

分 布——北海道、本州。

25. モンキクロメクラガメ (雌) *Capsus ater* Jak. (盲椿象科)

黒色、頭頂は暗黄、三黒縦條を具へ、觸角第三節及び四節は暗黄、前翅楔状片は橙黄色、その末端黒色、脛節の末端及び跗節の大部黄色。これは雑草間に普通なり。

期 節——六月—十月。

食 物——雑草。

分 布——北海道、本州、西比利亚。

26. モンヒメヘリガメ (雄) *Corizus maculatus* F. (縁椿象科)

黄赤、單眼は紅色、第四觸角節は中央にて褐色、半翅鞘は少々透明、脈上に黒點を具へ、膜質部に淡褐紋を散在す、脚に赤小點を密布し、跗節端は黒褐、尾節の中央に一黒縦條あり。これはアカザの如き雑草間に普通なり。

期 節——六月—十月。

食 物——雑草。

分 布——北海道、本州、歐洲。

27. ウスモンメクラガメ (雌) *Adelphocoris demisus* Horv. (盲椿象科)

淡黄褐、觸角黒色、第二乃至第五節の基部は黄色、頭、前胸の後縁、稜状部、腿節等は黒色、前翅の楔状片は黄色、末端黒色、膜質部は暗色を帯び、脈は黒褐。これは雑草間に普通なり。

期 節——六月—十月。

食 物——雑草。

分 布——北海道、本州。

28. ハリヘリガメ (雄) *Cletus trigonus* Thumb. (縁椿象科)

暗褐，體下黄色，黒點を散在し，觸角は黄褐，第一節は太く，外側に黒縦條を具へ，第四節は短，褐色，稜状部の末端黄色，半翅鞘の基部黄色，後縁の中央に各一黄點を装ひ，膜質部は暗色，脚黄色，兩側に黒縦條あり。これは稻を害するも地方的なり。

期 節——六月—十月。

食 物——禾本科植物。

分 布——本州，四國，九州，沖繩，臺灣，支那，比島，印度。

29. モモグロヒメヘリガメ (雌) *Corizus crassicornis* F. (縁椿象科)

體は灰褐，體下暗黄，赤褐紋を散在す，單眼の兩側に黒紋，觸角節の前後に一黒條あり，半翅鞘灰白，脈黄色，黒點あり，脚にも黒點を密布し，後腿節内方の基部は黒色，脛節及び跗節端は黒褐。普通種なり。

期 節——六月—八月。

食 物——アカザその他の雑草。

分 布——北海道，本州，西比利亞，歐洲。

30. フタホシガメ (雌) *Pyrrhocoris tibialis* Stål (星椿象科) (Pyrrhocoridae)

體は暗褐，體下黒色，頭頂に黒紋を具へ，頭頂板の中央に一黄縦條あり，觸角黒色，第一及び第二節の末端は黄色，前胸背の中央に一黄條を縦走す，半翅鞘外片の中央に一黒紋あり，脚黒色，腿節の末端及び脛節の外側黄色，これは倒木下若くは石下に捕獲せらる。

期 節——四月—八月。

食 物——不明。

分 希——北海道，本州。

第二十二圖

1. マキバサシガメ (雌) *Nabis reuteri* Jak. (食椿象科) (Reduviidae)

灰黄，雌暗黄，頭の中央に暗色の縦條を具へ，複眼の後方に黒褐紋あり，觸角黄色，第四節暗色，前胸背の中央に雄にては黒條を，雌にては暗色紋を具へ，半翅鞘に暗色紋を散在す。これは食肉性にして牧草間に普通なり。

期 節——七月—十月。

食 物——食肉性 (食椿象は全部食肉性なれば略して以下記せず)。

分 布——日本全土，西比利亞，歐洲。

2. ホリサシガメ (雌) *Pygolampis cognatus* Horv. (食椿象科)

灰褐，灰色の短毛を密生し，前頭の中央に暗色の叉状線を具へ，前胸背に四縦溝を装ひ，胸側に暗色條あり，前中脛節の兩端及び中央に暗色環を装ふ，腹面黒色。これは札幌地方に少なからず。

期 節——七月—十月。

分 布——北海道，本州。

3. ゴミアシナガサシガメ (雌) *Orthunaga biguttata* Uhl. (食椿象科)

暗黄褐，黄褐の長毛を密生す，第二觸角節の末端及び第三節の基部は黄白，前胸背中央に二黄條を縦走し，前翅は半透明，翅底脈は暗色，前縁は赤褐，末端脈は暗褐，脚は黄色，腿節に暗色紋あり。これは本州に廣く分布するも，その數少なし。一見蜘蛛に似たり。

期 節——七月—十月。

分 布——本州。

4. トビロサシガメ (雌) *Oncoccephalus pilicornis* H. S. (食椿象科)

淡黄褐，第一觸角節の内側に暗色の縦條を具へ，稜状部に顆粒多く，中央は黄褐，前翅の中央に天鷲絨様の黒條を装ひ，腿節に二黒條あり。これは九州地方には少なからず。

期 節——七月—十月。

分 布——本州，九州，沖縄，臺灣，支那，印度。

5. ヒゲナガサシガメ (雌) *Endochus stalianus* Horv. (食椿象科)

赤褐，頭の兩側及び下方は黄色，頸は黄褐，觸角黄色，第一節の基部黒褐，前胸背の前半黄褐，後半の兩側及び中央に黄縦條を具へ，稜状部は黄色，基部は暗黄，半翅鞘の内片は褐色，外片は赤色，末端に近く黒褐紋を装ひ，末端は黄色。これは槲斗科植物の葉上に普通なり。

期 節——七月—十月。

分 布——本州，四國，九州。

6. アカギホシガメ (雌) *Physopelta gutta* Burm. (食椿象科)

褐色，觸角黒色，第三節の基部黄白，末端灰褐，頭黄褐，頭頂の一縦條は褐色，前胸背の周縁は淡黄褐，半翅鞘の一紋及び膜質部は黒色。これはアカギに普通なり。

期 節——七月—十月。

分 布——本州，四國，九州，沖繩，臺灣，支那，印度。

7. マダラナガガメ (雌) *Lygaeus equestris* L. (長椿象科)

紅色，前胸の前縁，稜狀部及び翅の紋は黒色，膜質部の中央に白紋を具へ，脚は暗灰色。これは織形科植物に普通なる種類にして，晩秋家屋に飛來するもの多し。

期 節——七月—十月。

食 物——織形科植物。

分 布——北海道，本州，支那，朝鮮，西比利亞，歐洲，印度。

8. アカサシガメ (雌) *Cydnocoris russatus* Stål (食椿象科)

朱色，觸角，腹面及び脚は黒色，第三觸角節は暗褐，第四節は黄色，半翅鞘は朱色，膜質部は暗色を帯ぶ，胸側，胸片及び各接合部の帯は黒色。これは九州地方には普通なり。

期 節——七月—十月。

分 布——本州，四國，九州，臺灣，支那，比島。

9. シフジナガガメ (雌) *Lygaeus cruciger* Motsch. (長椿象科)

紅色，黒紋を具へ，顔黒色，中央に近く一赤紋を装ひ，觸角，稜狀部，半翅鞘，X字形紋等は紅色，脚黒色。これは雑草間に捕へ得べきも，餘り多からず。

期 節——七月—十月。

食 物——雑草。

分 布——北海道，本州，九州，西比利亞。

10. アカホシガメ (雄) *Dysdercus cingulatus* F. (星椿象科)

朱色，觸角黒色，第一節の基部赤色，前胸背の前縁は黄白，その後方に一褐紋を具へ，稜狀節は黒褐，半翅鞘の中央に圓形の一黒紋を装ひ，膜質部は黒色，外縁は細く灰白，接合膜は白色，脚暗褐，赤色の部分あり。これはワタ，モクゲ等に普通なり。

期 節——五月—十月(臺灣にては年中)。

食 物——ワタ，モクゲ。

分 布——沖繩，臺灣，支那，比島，馬來，印度。

11. クロモンサシガメ (雄) *Pirates turpis* Wk. (食椿象科)

黒色，灰色の短毛を密生し，その間に長黒毛を粗生す，半翅鞘は黒褐，内片の基部にある縦紋，L字形の縦條及び膜質部の卵形紋は黒色，跗節は褐色。これは森林内に捕へ得べきも，その數少なし。

期 節——五月—十月。

食 物——食肉性。

分 布——北海道，本州，支那。

12. クロバアカサシガメ (雄) *Labidocoris insignis* Dist. (食椿象科)

朱色，斑紋は黒色，前頭は淡黄褐，單眼は赤色，半翅鞘は黒色，前縁及び楔狀部は朱色，尾節の下面は褐色。これは中國地方に産するも餘り多からず。

期 節——六月—十月。

食物——食肉性。

分布——本州。

13. キイロサシガメ (雌) *Sirthenea flavipes* Stål (食椿象科)

黄色，前頭の両側に太き暗褐條を具へ，單眼の周圍及び頸の両側は黒色，前胸背後方の三分の一は黒褐，稜狀部は黒色，基部黄色，半翅鞘は黒色，黄色部あり。これは中國地方に稀ならず。

期節——七月—十月。

食物——食肉性。

分布——本州，四國，九州，臺灣，支那，比島，印度。

附言——本邦に産するものを *f. apicalis* Sign. と云ふ。

14. シロジフジホシガメ (雄) *Dysdercus crucifer* Mats. (星椿象科)

朱色，翅を疊む時はX字形の黄白紋を現はす，觸角，前胸背前縁の一紋，稜狀部，半翅鞘の内片，L字形黄白紋の内角にある一紋，膜質部，脚，胸面等は暗褐，觸角の基部赤色，前胸背の前縁及び接合部黄白。これは沖繩に普通なり。

期節——七月—十月。

食物——不明。

分布——沖繩，臺灣，新嘉坡。

15. ハリサシガメ (雌) *Acanthaspis cineticus* Stål (食椿象科)

黒色，白色の短毛を裝ひ，長黒毛を粗生す，第一觸角節中央の暗黄なるものあり，前胸背の棘狀突起は黄白，稜狀部に直立せる突起あり，半翅鞘は薙刀様の黄白縦條を裝ひ，脈は天鷲絨様の黒色，脚に黄紋あり。これは餘り多からず。

期節——七月—十月。

食物——食肉性。

分布——北海道，本州，九州。

16. ハラビロサシガメ (雌) *Nabis apterus* F. (食椿象科)

黒褐，前頭及び複眼は赤褐，單眼の両側は黄色，頸に黄紋を具へ，口吻，觸角は黄色，後者第一節の両側，第二節の末端は黒褐，前胸背は暗褐，稜狀部の両側に黄紋を裝ふ，半翅鞘は淡黄，脈褐色，脛節は黄色，黒褐部を具へ，腹側に黄紋あり。これは葉捲蟲を捕食す。札幌地方に普通なり。

期節——七月—十月。

食物——食肉性。

分布——北海道，本州，西比利亞，歐洲。

17. ヤニサシガメ (雌) *Velinus nodipos* Uhl. (食椿象科)

黒色，第一觸角節は長く，稍々同距離に黄色部あり，喉頭黄色，半翅鞘黒褐，腿節及び脛節に瘤狀の隆起多く，腿節に黄紋あり。これは自體より一種の膠質物を分泌し，塵芥を附着す。九州地方に少なからず。

期 節——七月—十月。

食 物——食肉性。

分 布——本州，九州。

18. アシトサシガメ (雄) *Prostemma hilgendorfi* Stein (食椿象科)

黒色，頭頂板の末端は黄褐，口吻及び觸角は黄色，前胸背稜状部の後縁及び半翅鞘は赤黄，膜質部暗色，前縁白色，脚黄色，後胸下赤黄，腹背赤褐。これは河畔の砂地に普通なり。

期 節——七月—十月。

分 布——北海道，本州。

19. キボシサシガメ (雌) *Ectomocoris biguttulus* Stål (食椿象科)

黒色，前胸背は少しく緑味を帯び，觸角は褐色，頭に灰白毛多く，半翅鞘は暗褐，楕圓形の一黄紋を具へ，膜質部暗色，基部に黄色紋を装ひ，各接合膜の後角紋は黄色，脛節及び附節に金色の短毛多し。これは沖縄及び臺灣に稀ならず。

期 節——六月—十月。

食 物——食肉性。

分 布——沖縄，臺灣，印度。

20. モンシロサシガメ (雌) *Rhinocoris leucospilus* Stål (食椿象科)

黒色，單眼の前方及び中間に一黄白紋を具へ，頭下は黄白，半翅鞘は黒色，前胸側片及び前胸片の中央は黄白，接合膜は黒色と白色の斑をなす。これは蛄蠊，蜚蛉等を捕食す。

期 節——七月—十月。

食 物——食肉性。

分 布——樺太，北海道，本州，西比利亞。

21. ピロウドサシガメ (雄) *Ectrychotes haematogaster* Burm. (食椿象科)

黒藍色，觸角の末端黄褐，前胸背の兩側は暗褐，半翅鞘は暗色，基部は黄色，接合節赤色，第四，五，六腹節の後縁に黒紋あり。これは京都地方に少なからず。

期 節——七月—十月。

食 物——食肉性。

分 布——本州。

22. クロハネルリサシガメ (雄) *Ectrychotes violaceus* Hahn (食椿象科)

黒藍色，觸角は黒褐，黒長毛を具へ，前翅は天鷲絨様の黒色，腹側は淡黄褐，その内部は紅色，二黒紋を装ふ，腹面黒色，紅色部あり，脚は黒色，赤色と黄色の部分あり。これは東京地方に産するも，その數餘り多からず。

期 節——七月—十月。

食 物——食肉性。

分 布——本州。

23. アカステサシガメ (雌) *Conorhinus rufofasciatus* Deg. (食椿象科)

暗褐，觸角の第三及び四節は黄色，前頭に小顆粒を散在し，前胸背及び稜状部に顆粒多く，

半翅鞘の縦脈及び中央の一紋は淡黄褐，接合膜及び同各節の後縁は黄色。これは沖縄，臺灣，支那には普通にして，夜間南京蟲同様に吸血す。

期 節——年中。

食 物——人血。

分 布——東洋の半熱帯地。

24. アカヘリサシガメ (雌) *Rhinocoris ornatus* Uhl. (食椿象科)

黒色，紋は黄色，前胸背の周圍（中央の緊縮部を除き）及び腹側は紅色。これは中國地方に少なからず。

期 節——七月—十月。

食 物——食肉性。

分 布——本州，四國，九州。

25. アカシマサシガメ (雌) *Haematoloecha nigrorufa* Stål (食椿象科)

朱色，體下黒色，頭，觸角，前胸背の溝，稜狀部，脚等は黒褐，轉節淡色，腹背暗褐，兩側は朱色，各節の後縁は暗色。これは東京地方に少なからず。

期 節——七月—十月。

食 物——食肉性。

分 布——本州，九州。

第二十三圖

1. ヒメアメンボ (雌) *Gerris paludum* F. (水黽科) (Gerridae)

黒褐，體下銀白，少しく黄色を帯び，前胸の縦條及び中胸背の兩側は赤褐，脚黄色，腿節の外方に黒縦條あり。これは水上を疾走する小形種にして，食肉性なり。一種飴様の香を發す。

期 節——年中(冬季地中，石下，倒木下)。

食 物——食肉性。

分 布——日本全土。

2. ウミアメンボ (雌) *Halobates sericeus* Esch. (水黽科)

灰色，白色の絹様毛を密生し，後頭の二紋及び前胸背の兩側は淡黄褐，觸角及び脚黑色，基部及び轉節に黄褐紋を裝ふ，腹面は黄色。これは太平洋上には普通なり。

期 節——年中。

食 物——食肉性。

分 布——本州，四國，九州，沖繩，支那，印度。

3. オホアメンボ (雌) *Aquarius elongatus* Uhl. (水黽科)

黒褐，前中兩胸背に黄色の縦條を具へ，前翅の内縁は黄褐，體下は灰色，基節の下面は黄色。これは本邦産最大アメンボなり。東京地方の池沼に普通なり。

期 節——年中。

食 物——食肉性。

分 布——本州，四國，九州。

4. シマアメンボ (雄) *Metrocoris histrio* Buch. (水黽科)

暗黄，黑色の紋條を具へ，腹部は黑色，各節の後縁は多少黄色を帯ぶ。山間の小川に多く，常に流水に游泳す。何れの地方にも普通なり，時に長翅を有するものあり。

期 節——六月—十月。

食 物——食肉性。

分 布——日本全土。

5. イトアメンボ (雌) *Hydrometra vittata* Stål (水黽科)

黒褐，中胸背の中央に一白縦條を具へ，前翅の前縁及び後縁に近く白條を裝ひ，脚は黄褐。これは池沼に普通なるも，その小形なるが爲め人の注意を惹かず，主として藻上にあり。

期 節——六月—十月。

食 物——食肉性。

分 布——日本全土。

6. コラヒムシ (雄) *Sphaerodema japonicum* Vuill. (田黽科)

暗褐，前跗節に爪を缺き，中後肢に暗褐紋なし。これは，池沼に普通なる種類にして，雄は雌の卵子を背上に負ふを以て子負蟲の名あり，時に雌の子を負ふものあり。幼魚の害蟲として知らる。

期 節——年中。

食 物——食肉性。

分 布——日本全土。

7. **メミツムシ** (雌) *Pelogonus flavomarginatus* Scott (眼水蟲科) (*Pelagonidae*)

黒褐，斑紋は黄褐，頭に點刻及び横皺多し，半翅鞘に判然せざる青白紋を散在し，體下には灰白毛多し。これは中國地方に普通なる種類にして，幼蟲は能く游泳す。成蟲は砂上にありて活潑に飛翔す。

期 節——七月—十月。

食 物——食肉性。

分 布——本州，四國，九州。

8. **タイコウチ** (雌) *Laccotrephes ruber* L. (紅娘華科) (*Nepidae*)

黄褐乃至暗褐，全面に顆粒突起多く，尾毛は體より長し，脚に紋なし。これは中國地方の池沼に普通なり。

期 節——六月—十月。

食 物——食肉性。

分 布——本州，四國，九州，臺灣，支那，印度。

9. **タガメ** (雌) *Kirkaldyia deyrollii* Vuill. (田龜科)

暗灰色，前胸背の後縁に一横溝を具へ，前翅は革質，後翅は黄白，翅底黄色，中後の兩肢に暗褐紋を装ふ。これは本邦に普通なるも，北海道には稀なり。時に幼魚に大害あり，又蛙を捕食す。河泊蟲とも云ふ。

期 節——七月—十月。

食 物——食肉性。

分 布——日本全土。

10. **ミツカマキリ** (雌) *Ranatra chinensis* Mayr (紅娘華科)

暗黄褐，前胸背の兩側に葉狀の附屬物を具へ，稜狀部は稍々四角形，前翅は尾端に達せず，體下及び脚は暗黄。これは池沼に普通なり。尾毛にて呼吸す。時に幼魚に大害あり。

期 節——七月—十月。

食 物——食肉性。

分 布——日本全土。

11. **オキナハマツモ** (雄) *Notonecta bivittata* Mats. (松藻蟲科) (*Notonectidae*)

淡黄褐，頭及び前胸背に紋を缺き，稜狀部は黑色，小顆粒を散在し，前翅は赤褐，黒紋を散在す，前翅鞘の末端及び膜質部(基部を除き)は黑色，後翅底は朱色。これは沖繩の池沼に稀ならず。

期 節——五月—十月。

食 物——食肉性。

分 布——沖繩。

12. ナミマツモ (雄) *Notonecta triguttata* Motsch. (松藻蟲科)

灰黄、稜状部は黒色、前翅を疊む時は三黒紋を現はす。これは池沼に普通なる種類にして、常に腹部を上方となして游泳し、又浮上す。多く松藻中に住するを以てこの名あり、一名バツテラムシとも云ふ。

期 節——年中。

食 物——食肉性。

分 布——日本全土。

13. トゲナベバタ (雄) *Aphelocheirus nawae* Mats. (鍋蓋蟲科) (*Aphelocheiridae*)

黄色、斑紋は暗色、雄には腹背黒色、中央及び兩側に黄紋を列ぬ。これは岐阜地方の清水に少なからず。砂礫の多き溝にありてはその斑紋は保護色なり。

期 節——七月—十月。

食 物——食肉性。

分 布——本州、九州。

14. コフウセン (雌) *Corixa substriata* Uhl. (風船蟲科) (*Corixidae*)

黄色、前胸背及び前翅は暗褐、前者には約七條の黄帯を具へ、後者には波狀の黄線を裝ふ。これは何れの地方の池沼にも普通なり。東京地方にてはこれをコツブ中の水に入れ一種の美音を發せしめ、風船蟲と稱して市中に販賣するものあり。

期 節——五月—十月。

食 物——食肉性。

分 布——日本全土。

15. コマツモ (雌) *Anisops scutellaris* H. S. (松藻蟲科)

黄白、頭黄色、稜状部黒褐、その後縁は黄白、前翅は透明、白色を帯び、翅を疊む時は黒色の腹背を透視し得べし、後脛節の下方は黒色。これは中國地方の池沼に普通なり。

期 節——年中。

食 物——食肉性。

分 布——本州、四國、九州、小笠原島。

16. ナミフウセン (雌) *Corixa distanti* Kirk. (風船蟲科)

黄色、前胸背及び前翅は暗褐、前者には十條の黄帯を具へ、後者には黄帯及び波狀の黄線を裝ふ。これは最大の風船蟲にして、札幌地方には普通なり。

期 節——五月—十月。

食 物——食肉性。

分 布——北海道、本州。

17. ヒメミツカマキリ (雌) *Ranatra sordidula* Dohrn (*unicolor* Scott) (紅娘華科)

ミツカマキリ(第二十三圖10)に酷似すれども、その異なる所は、形小、前脛節の下方は黒色、稜状部は稍々卵形、尾状突起は腹部より短かきにあり。これは中國地方の池沼に少なからず。

期 節——五月—十月。

食 物——食肉性。

分 布——本州，四國，九州。

18. オキナハコラヒ (雄) *Sphaerodema rusticum* L. (田鱉科)

(第二十三圖6)に酷似するも，その異なる所は，形小，鉛色，前胸背の後縁は廣く，横溝は不明瞭，點刻は微小，半翅鞘に網狀脈を缺くにあり。これは沖縄，臺灣等の半熱帯地方の池沼に普通なり。雄は雌の卵子を負ふ。

期 節——年中。

食 物——食肉性。

分 布——沖縄，臺灣，支那，印度。

19. コバンムシ (雄) *Naucoris exclamationis* Scott (小判蟲科) (Naucoridae)

黄色，少しく綠色を帯び，腹面暗黄，兩側に暗色紋を列ぬ。これは播州地方の池沼に普通なり。

期 節——五月—十月。

食 物——食肉性。

分 布——本州，四國，九州。

Plate XIX

1. **Alcimocoris borealis** Dist. ♂ (*Pentatomidae*)
(*Ushi-game*)

Fuscous; antenna at the base yellow, a spot on the vertex, a spot between the eyes, 2 central stripes, the anterior margin on both sides, 2 central spots and a longitudinal stripe on the pronotum, as well as 2 spots on the scutellum testaceous; femur except at the apex fuscous. This is not few in Okinawa.

Time of appearance—August–October.

Food—Unknown.

Distribution—Honshu, Kiushu, Okinawa.

2. **Calliphara excellens** Burm. ♀ (*Pentatomidae*)
(*Nanahoshi-kingame*)

Golden green, with black markings; antenna black; elytron at the costa dark indigo; legs rufous, femur at the apex, and tibia dark indigo, tarsi black. This is not few in Okinawa.

Time of appearance—August–October.

Food—Unknown.

Distribution—Okinawa, Formosa, China, India.

3. **Coptosoma biguttulum** Motsch. ♂ (*Pentatomidae*)
(*Hime-marugame*)

Black; antenna yellow, the apical 2 joints dark fuscous; 2 yellow spots at the base of scutellum. This is common upon the young shoots of *Leguminous* plants.

Time of appearance—July–October.

Food—*Leguminous* plants.

Distribution—Whole Japan.

4. **Poecilocoris lewisi** Dist. ♂ (*Pentatomidae*)
(*Akasuji-kingame*)

Golden green, markings fulvous, with a purplish shade; 2 stripes on the vertex, the inner margin of eye, and antenna black, the latter with a purplish shade; body beneath fulvous, pleurae, stigmata and legs golden green. This is not few in the central part of Japan.

Time of appearance—August–October.

Food—Unknown.

Distribution—Honshu, Kiushu, Formosa.

5. Eysarcoris melanocephalus F. ♂ (*Pentatomidae*)
(*Kurozu-marugame*)

Pale yellow; the 4th (except the base) and 5th antennal joints black, 2 spots on the anterior margin of pronotum, a larger spot near the base of scutellum, and the membrane grayish white; body beneath dark purplish, at the sides pale yellow, with a row of black spots. This is common upon weedy plants.

Time of appearance—August–October.

Food—Weedy plants.

Distribution—Hokkaido, Honshu, China.

6. Nezara antennata Scott ♂ (*Pentatomidae*)
(*Ao-lasugame*)

Green; the 3rd, 4th and 5th antennal joints black, the 2nd and the following abdominal segments with each a black speck at the outer margin. This is not few upon the *Gramineous* plants.

Time of appearance—July–October.

Food—*Gramineous* plants.

Distribution—Honshu, Shikoku, Kiushu.

7. Eysarcoris lewisi Dist. ♂ (*Pentatomidae*)
(*Lewis-shirahoshi-game*)

Dark gray, with a purplish shade; head dark purplish; antenna yellow, the 4th joint at the apex, and 5th black; scutellum with a pale yellow spot at each basal angle; membrane dark yellow; body beneath purplish brown; legs yellow. This is common upon the *Compositous* plants.

Time of appearance—July–October.

Food—*Compositous* plants.

Distribution—Honshu, Shikoku, Kiushu.

8. Chrysocoris grandis Thunb. ♂ (*Pentatomidae*)
(*Ō-kingame*)

Orange-red; markings dark purple; antenna, legs, pectus and abdomen black, 2 spots on the abdomen, and cauda carmine-red, this is common on the young shoots of *Gardenia florida*, *Melia azedarach*, *Aleuritea cordata*.

Time of appearance—August–October.

Food—*Rubiaceous*, *Meliaceous* and *Euphorbiaceous* plants.

Distribution—Whole Japan, Okinawa, Formosa, China, India.

9. *Bolbocoris reticulata* Dall. ♀ (*Pentatomidae*)
(*Hanadaka-game*)

Dark gray, with some reticulated markings; antenna and rostrum rufous, the latter at the base yellow; scutellum on each side with a pale yellowish spot, in the middle with a paler stripe; legs black, tarsi rufous. This is common upon weedy plants especially in the central part of Japan, but seems to be not present in Hokkaido.

Time of appearance—August–October.

Food—Weedy plants.

Distribution—Honshu, Shikoku, Kiushu.

10. *Menida violacea* Motsch. ♂ (*Pentatomidae*)
(*Shirahoshi-murasaki-game*)

Dark purplish; antenna black, head, pronotum at the anterior margin and both sides, the apex of scutellum, lateral spots of the abdomen, legs as well as body beneath, yellow; legs scattering black specks; the 2nd ventral segment with a yellow spine. This is not few upon weedy plants.

Time of appearance—August–October.

Food—Weedy plants.

Distribution—Honshu, Kiushu, Siberia.

11. *Eysarcoris ventralis* West. ♀ (*Pentatomidae*)
(*Shiraboshi-game*)

Grayish yellow; head black, with an indigo-shade; antenna yellow, the 3rd and 4th joints fuscous; pronotum at the base near the margin with black spots, at the sides white, scutellum on each side with a pale yellow spot; legs pale yellow, tarsi dark fuscous. This is common upon the *Compositous* plants.

Time of appearance—August–October.

Food—*Compositous* plants.

Distribution—Hokkaido, Honshu, China.

12. *Palomera angulosa* Motsch. ♀ (*Pentatomidae*)
(*Yezo-aogame*)

Green; antenna dark fuscous, at the base green; membrane dark fuscous; body beneath pale greenish yellow; cauda with a rufous tinge, in the female with 4 projections, stigmata being black. This is common upon the *Compositous* plants.

Time of appearance—July–October.

Food—*Compositous* plants.

Distribution—Hokkaido, Honshu.

13. *Sehirus niveimarginatus* Scott ♀ (*Pentatomidae*)
(*Shiroheri-jigame*)

Dark indigo; antenna, head, rostrum, body beneath and legs black; pronotum on the sides and hemelytron at the anterior margin narrowly pale yellow; each tarsal joint at the base fulvous. This is not rare, its food-plant being not known.

Time of appearance—July–October.

Food—Unknown.

Distribution—Honshu, Kiushu, Okinawa.

14. *Plautia stali* Scott ♀ (*Pentatomidae*)
(*Hanenaga-aogame*)

Green; antenna yellow, each a spot near the apex of the 2nd, 3rd, 4th joints, as well as each a lateral stripe of pronotum black; hemelytron rufous, at the hind margin green, connexivum with a yellow tinge, at the base darker, lateral spots of abdomen black; the apices of tibiae, and tarsi yellow. This is not few among weedy plants.

Time of appearance—August–October.

Food—Weedy plants.

Distribution—Honshu, Kiushu.

15. *Brachyplatys subaeneus* West. ♀ (*Pentatomidae*)
(*Tsuya-marugame*)

Shiny black, with a purplish indigo-shade; antenna, pro- and mesonotum at the sides, scutellum at the periphery and legs fulvous; abdomen at the sides yellow. This is not numerous in Okinawa.

Time of appearance—May–October.

Food—Unknown.

Distribution—Okinawa, Formosa, China, Malay, India.

16. *Menida scotti* Jak. ♂ (*Pentatomidae*)
(*Scott-game*)

Dark green, at the posterior half purplish brown; antenna black, the 3rd joint at the apex, both ends of the 4th as well as a posterior half of the 5th pale yellow; pronotum at the sides pale yellow, scutellum at the apex yellow; hemelytron with a purplish tinge, membrane with fuscous markings. This is found among weedy plants.

Time of appearance—July–October.

Food—Weedy plants.

Distribution—Hokkaido, Honshu, Korea, Siberia.

17. *Scotinophara lurida* Burm. ♂ (*Pentatomidae*)
(*Kuro-game*)

Black, with a shade of purple; pronotum at the anterior margin and in the middle at the sides with each a projection; tibiae and tarsi rufous. This is very injurious to the rice-plant.

Time of appearance—August–October

Food—Rice-plant and the other *Gramineous* plants.

Distribution—Honshu, Shikoku, Kiushu, Formosa, China, India.

18. *Coptosoma punctissimum* Mont. ♀ (*Pentatomidae*)
(*Maru-game*)

Fulvous to dark fuscous, with numerous black specks; antenna yellow; scutellum nearly quadrate, covering the whole abdomen; legs yellow. This is very common in the central part of Japan, being very injurious to *Leguminous* plants.

Time of appearance—July–October.

Food—*Leguminous* plants.

Distribution—Honshu, Shikoku, Kiushu.

19. *Dorycoris baccarum* L. ♀ (*Pentatomidae*)
(*Buchihige-game*)

Grayish brown, with a purplish shade; antenna black, each joint at the base, and the 1st yellow; abdomen at the sides alternately black and yellow. This is common upon *Lilium*, *Arctium*, *Sesamum*-spp., etc.

Time of appearance—July–October.

Food—Various lower plants.

Distribution—Whole Japan, Korea, Manchuria, China, Siberia, Europe, India.

20. Graphosoma rubrolineatum West. ♂ (*Pentatomidae*)
(*Akasuji-game*)

Red, with black stripes, 2 of which are on head, 6 on pronotum, 4 on scutellum. This is common all over Japan, injuring *Lilium*, *Arctium*, *Daucus*, *Siler*-spp., etc.

Time of appearance—August–October.

Food—Various lower plants as *Compositous*, *Umbelliferous* and *Liliaceous* plants.

Distribution—Whole Japan, Korea, China, Siberia.

21. Adrisa magna Uhl. ♂ (*Pentatomidae*)
(*Yokozuna-jigame*)

Black; antenna at the 3rd and 4th joints fulvous; connexivum fulvous, veins obsolete. This is found upon a ground, often hiding under a stone or a fallen wood.

Time of appearance—July–October.

Food—Unknown.

Distribution—Honshu, Formosa, China, India.

22. Brachyaulax miyakonus Mats. ♂ (*Pentatomidae*)
(*Miyako-kingame*)

Purplish indigo, beneath golden green; abdomen at the connexivum orange-yellow; coxa, trochanter, femur testaceous; antenna fuscous, the 1st joint at the base yellow; scutellum with black markings. This is common in Okinawa (Miyako Isle).

Time of appearance—August–October.

Food—Unknown.

Distribution—Okinawa.

23. Cantao ocellatus Thunb. ♀ (*Pentatomidae*)
(*Akagi-game*)

Fulvous, a central stripe on occiput, head beneath, antenna at the base, pectus, tibia, the hind femur, as well as venter black, the markings being variable. This is common in the subtropical regions of Japan, being injurious to *Mallota*-spp.

Time of appearance—May–October.

Food—*Mallota*-spp.

Distribution—Okinawa, Formosa, China, India.

24. *Zicronia coerulea* L. ♂ (*Pentatomidae*)
(*Ruri-game*)

Bluish indigo; antenna and rostrum black; membrane of hemelytron dark fuscous; rostrum robust, perhaps adapted to suck the blood of caterpillars. This is quite common in Japan, being very beneficial to kill various caterpillars as *Dendrolimus spectabilis*, *D. albolineatus*, etc.

Time of appearance—July–October.

Food—Carnivorous.

Distribution—Saghalien, Whole Japan, Korea, China, Siberia, Europe.

25. *Grathoconus triguttatus* Motsch. ♀ (*Pentatomidae*)
(*Mitsuboshi-jigame*)

Shiny black, at the periphery somewhat brownish; scutellum at the apex white; hemelytron near the middle with a small white spot; connexivum black, at the outer margin paler. This is found under a stone or a fallen wood, being probably carnivorous.

Time of appearance—August–October.

Food—Unknown.

Distribution—Honshu, Shikoku, Kiushu.

Plate XX

1. *Urochela jozankeana* Mats. ♀ (Pentatomidae)

(Yotsumon-game)

Fulvous; antenna black, at the base of the 4th and 5th joints yellow, a vertical stripe, occiput, 2 spots of hemelytron, notal and pleural spots black; connexivum fulvous. This is common especially on the latter part of September, being injurious to the elm-tree.

Time of appearance—September–October.

Food—Elm-tree.

Distribution—Hokkaido.

2. *Carpocoris pudicus* Poda ♀ (Pentatomidae)

(Murasaki-game)

Fulvous to reddish yellow, with a purplish shade; antenna black, the 1st joint reddish yellow, at the pronotum anteriorly with 4 black stripes; scutellum at the apex yellow. This is common upon *Lilium* and *Daucus*-spp.

Time of appearance—July–October.

Food—Lower plants as *Lilium* and *Daucus*-spp.

Distribution—Hokkaido.

3. *Sastragela scutellata* Scott ♀ (Pentatomidae)

(Monki-tsunogame)

Yellowish green; antenna green, the apical 3 joints infuscated; rostrum, legs, and body beneath, yellow; membrane fulvous; coxa fuscous; in the female the cauda acutely produced. This is not few in Japan, but its food-plant unknown.

Time of appearance—July–October.

Food—Unknown.

Distribution—Honshu, Kiushu, Formosa.

4. *Halyomorpha picus* F. ♂ (Pentatomidae)

(Kusagi-game)

Grayish yellow to grayish brown, yellowish marmorated; antenna reddish yellow, the 3rd joint at the apex, the 4th in the middle, the 5th largely, dark fuscous; pronotum at the anterior margin with 4 yellow spots in a transverse row. This is common upon *Clerodendron*, *Prunus* and

the other deciduous plants, being not at home in Hokkaido.

Time of appearance—July–October.

Food—Various deciduous plants.

Distribution—Honshu, Shikoku, Kiushu, Formosa, China, Malay.

5. *Gnopsis affinis* Uhl. ♂ (*Pentatomidae*)
(*Ebiro-game*)

Pale fulvous; antenna reddish, the 5th joint at the apex black, the 1st yellow, with numerous black specks; hemelytron dark reddish yellow; connexivum grayish white; legs yellow, tibia and tarsi with a reddish tinge; stigmata black. This is common upon the *Gramineous* plants, especially upon *Miscanthus*-spp.

Time of appearance—July–October.

Food—*Gramineous* plants.

Distribution—Honshu, Shikoku, Kiushu.

6. *Elasmotethus matsumurae* Horv. ♂ (*Pentatomidae*)
(*Benimon-game*)

Yellowish green; antenna yellow, 3 apical joints fuscous, the 5th at the base being yellow; pronotum at the anterior margin with a yellow band; scutellum at the apex narrow, at the base and middle with each a pale carmine-red patch; hemelytron at the hind and outer margins pale carmine-red, membrane with a brownish spot. This is common in the vicinity of Sapporo, attracted by the lamp, being injurious to *Acer*, *Ulmus*-spp.

Time of appearance—July–October.

Food—*Aceraceous* and *Ulmaceous* plants.

Distribution—Hokkaido, Honshu.

7. *Aenaria lewisi* Scott ♂ (*Pentatomidae*)
(*Shiroheri-game*)

Gray to grayish yellow, with numerous black specks, the basal 2 joints yellow; hemelytron at the costa white or pale yellow, at the inner margin with a black stripe; cauda with 5 teeth. This is not few upon the *Gramineous* plants as *Miscanthus*-spp.

Time of appearance—July–October.

Food—*Gramineous* plants.

Distribution—Honshu, Shikoku, Kiushu.

8. Erthesina fullo Thunb. ♂ (*Pentatomidae*)
(*Kimadara-game*)

Fuscous, with numerous yellow specks; anterior legs elongated, tibia compressed; abdomen on the sides, and body beneath, yellow, hemelytron with the membrane black; legs black, with yellowish markings. This is common upon the fruit-trees.

Time of appearance—July–October.

Food—Fruit-trees as *Citrus*, *Prunus*-spp.

Distribution—Honshu, Shikoku, Kiushu, Formosa, China, India.

9. Urochela luteovaria Dist. ♂ (*Pentatomidae*)
(*Nashi-game*)

Grayish brown; head dirty yellow, occiput with 3 black spots, at the anterior margin with 3 black stripes; antenna black, the 4th and 5th joints at the bases yellow; pronotum anteriorly with black spots, posteriorly in the middle with a short yellow stripe; hemelytron at the costal end and at the base with each a yellow spot; legs yellow, with fuscous markings. This is injurious to fruit-trees.

Time of appearance—August–September.

Food—Fruit-trees, as *Malus* and *Prunus*-spp.

Distribution—Hokkaido, Honshu.

10. Aenaria assimulans Dist. ♂ (*Pentatomidae*)
(*Ine-game*)

Allied to *A. lewisi* Scott, but differs from it in having the antenna yellowish red, at the apex infuscated, pronotum anteriorly with 2 black spots, scutellum at the base with 4 black spots, the both yellowish striped on each side, hemelytron on the sides pale yellow, tarsi being brownish. This is common upon the rice-plant, but local in its occurrence, being abundant at Prov. Bōshu.

Time of appearance—July–October.

Food—Rice-plant and the other *Gramineous* plants.

Distribution—Honshu, Shikoku, Kiushu.

11. Acanthosoma labiduroides Jak. ♂ (*Pentatomidae*)
(*Hasami-game*)

Green; antenna fulvous, the 3rd joint at the apex infuscated; a pronotal projection on each side and scutellum at the apex carmine-red; membrane fuscous; in the male the cauda with a carmine-red fork. This is common upon *Rhus*-spp.

Time of appearance—July–October.

Food—*Rhus toxicodendron* and the others.

Distribution—Hokkaido, Amur.

12. *Picromerus lewisi* Scott ♀ (*Pentatomidae*)
(*Kuchibuto-game*)

Grayish brown; antenna rufous, the 2nd, 3rd and 4th joints at the apices fuscous; pronotum at each side posteriorly with a reddish yellow projection; 2 spots of scutellum at the base and its apex reddish yellow; legs pale brownish. This is common in the northern part of Japan, being very beneficial in devouring various caterpillars as *Dendrolimus*, *Lymantria*-spp.

Time of appearance—July–October.

Food—Carnivorous.

Distribution—Saghalien, Hokkaido, Honshu.

13. *Aelia fieberi* Scott ♀ (*Pentatomidae*)
(*Uzura-game*)

Yellow; head elongated, somewhat downwardly curved, with grayish brown stripes. This is locally common upon the stem of rice-plant, but not widely distributed.

Time of appearance—July–October.

Food—Rice-plant and the other *Gramineous* plants.

Distribution—Honshu, Shikoku, Kiushu.

14. *Agonoscelis nubila* F. ♂ (*Pentatomidae*)
(*Ayanami-game*)

Testaceous; antenna, 4 vertical stripes, pronotum at the hind margin, a spot on the hemelytron black; pronotum and scutellum with each a yellow medial stripe; legs black. This is common in the central part of Japan.

Time of appearance—July–October.

Food—Unknown.

Distribution—Honshu, Shikoku, Kiushu, Okinawa, Formosa, China,

India.

15. *Acanthosoma denticauda* Jak. ♀ (*Pentatomidae*)

(*Seaka-t unogame*)

Green; antenna, head, pronotum at the anterior margin, rostrum, body beneath and legs yellow; antenna except the 2nd joint dark fuscous, pronotal projection fuscous, scutellum rufous, at the apex reddish, at the sides yellow, at the hind margin narrowly black, the cauda reddish, in the male with one ^-shaped projection. This is widely distributed in Japan.

Time of appearance—August–October.

Food—Unknown.

Distributien—Whole Japan.

16. *Cantheconidea furcellata* Wolf. ♀ (*Pentatomidae*)

(*Ki-shimofuri-game*)

Testaceous, with numerous fuscous specks; at the 3rd, 4th and 5th joints of antenna apically fuscous, a vertical stripe black; scutellum at the base with 3 pale yellow spots; membrane black, at the apex hyaline, with a black spot; femur at the apex and tibia at both ends black. This is beneficial in eating various caterpillars.

Time of appearance—May–October.

Food—Carnivorous.

Distribution—Okinawa, Formosa, India, Africa, Mexico.

17. *Eurydema rugosum* Motsch. ♂ (*Pentatomidae*)

(*Sa-game*)

Red; head in the middle black, antenna and rostrum brown; scutellum with a triangular spot; hemelytron with red markings. This is very common upon the Cruciferous plants.

Time of appearance—July—August.

Food—*Cruciferous* plants.

Distributien—Whole Japan.

18. *Pentatoma japonicum* Dist. ♀ (*Pentatomidae*)

(*Tsuno-aogame*)

Green with numerous punctures, metallic shining, beneath fulvous; antenna rufous, the last 2 joints fulvous; pronotal projections truncated at the apices; legs brown, tarsi paler. This is common in the vicinity of

Sapporo, being injurious to the elm-tree.

Time of appearance—July–October.

Food—Elm-tree.

Distribution—Hokkaido, Honshu.

19. *Urostylis westwoodi* Scott ♂ (*Pentatomidae*)
(*Kunugi-game*)

Green; antenna at the apical 2 joints greenish fuscous, the 3rd fuscous, the 4th and 5th yellow, at the apices being fuscous; membrane with fuscous veins; each abdominal segment with a black speck; tibia at the base and tarsi at the apex fuscous. This is not few upon the *Quercaceous* plants, being widely distributed.

Time of appearance—July–October.

Food—*Quercaceous* plants.

Distribution—Whole Japan.

20. *Carbula humerigera* Uhl. ♀ (*Pentatomidae*)
(*Toge-game*)

Fuscous, with an indigo-shade; antenna dirty yellow, the 4th and 5th joints largely black, the 5th at the base pale yellow; pronotum at the sides and scutellum at the apex white; legs pale yellow, with numerous black specks, tibiae at the apices, and tarsi largely, fuscous. This is common upon *Erigeron linigolius* and the other *Compositous* plants.

Time of appearance—July–October.

Food—*Compositous* plants.

Distribution—Whole Japan.

21. *Megymemum tauriforme* Dist. ♀ (*Pentatomidae*)
(*Nokogiri-game*)

Fuscous, with an indigo-shade; antenna 4 jointed, at the apex of the 4th joint orange-yellow; membrane yellow; tarsi brown, at the connexivum strongly saw-like indented. This is not few in the southern part of Japan.

Time of appearance—July–October.

Food—Unknown.

Distribution—Honshu, Shikoku, Kiushu.

22. *Carpocoris fuscispinus* Boh. ♂ (*Pentatomidae*)
(*Yotsuboshi-game*)

Resembles *C. pudicus* Poda (Pl. XX, f. 2), but differs from it in having the notal projection blunter, infuscated, pronotum anteriorly with 2 or 4 yellow spots in a transverse row. This is found upon the apple and elm-trees, being not few.

Time of appearance—July–October.

Distribution—Hokkaido, Honshu, Europe.

23. Paratrachia fulgens Dist. ♀ (Pentatomidae)

(*Beni-kuohibutogame*)

Vermilion-red; antenna, pronotum anteriorly, the dorsal part of abdomen, and legs, black; coxa with a reddish shade; membrane subhyaline, with a fulvous tinge. This is not few in the southern part of Japan.

Time of appearance—June—October.

Food—*Thea japonica* Nois., *Pieris ovalifolia* Don.

Distribution—Honshu, Kiushu.

24. Nezara viridula L. ♂ (Pentatomidae)

(*Ao-game*)

Green; antenna with black parts, in some individuals pronotum anteriorly with grayish white markings, which are also variable. This is common in the southern part of Japan, being injurious to the *Gramineous* plants.

Time of appearance—July–October.

Food—*Gramineous* plants.

Distribution—Honshu, Shikoku, Kiushu, Hachijo, Bonin, Korea, China, Siberia, Europe.

25. Lebia decempunctata Motsch. ♂ (Pentatomidae)

(*Tohoshi-game*)

Dirty yellow; the 2nd antennal joint at the apex fuscous; pronotum in the middle with 4 brownish spots in a transverse row; body beneath and legs yellow. This is common upon the elm-tree.

Time of appearance—July–October.

Food—Elm-tree.

Distribution—Hokkaido, Honshu, Siberia.

Plate XXI

1. *Acanthocoris sordidus* Thunb. ♀ (Coreidae)

(Hozuki-herigame)

Fuscous, strongly granulated; antenna with bristly hairs; pronotum on both sides with each a projection; hemelytron with fuscous membrane. This is common upon the egg-plant and the bladder-herb.

Time of appearance—July–October.

Food—*Solanaceous* plants.

Distribution—Honshu, Shikoku, Kiushu, Okinawa, Formosa, China, India.

2. *Syromastes marginatus* L. ♂ (Coreidae)

(Nami-herigame)

Brown to rufous; antenna robust, the 1st and 2nd joints about equal, the 3rd is shorter than the 2nd, the 4th smaller; abdomen on the sides strongly blade-like expanded; scutellum granulated. This is common upon *Arctium Lappa* and the similar plants.

Time of appearance—June–October.

Food—*Compositous* plants.

Distribution—Hokkaido, Honshu, Siberia, Europe.

3. *Leptoglossus membranaceus* F. ♂ (Coreidae)

(Ashibiro-heri-game)

Black; the 2nd, 3rd antennal joints medially, as well as the 4th at the apex orange-yellow; 2 posterior spots of vertex and a lateral stripe, a bow-like band near the middle of pronotum, both sides and apex of scutellum, a medial marking of the hemelytron and ventral markings orange-yellow. This is common upon the *Cucurbitaceous* plants.

Time of appearance—June–October.

Food—*Cucurbitaceous* plants.

Distribution—Okinawa, Formosa, China, Philippines, India.

4. *Homoeocerus dilatatus* Horv. ♀ (Coreidae)

(Harabiro-herigame)

Fulvous, beneath yellow, with numerous black specks; antenna rufous; membrane with black speck upon the medial vein; abdomen on the sides

blade-like expanded. This is common upon the *Leguminous* plants as *Lesped za-*
spp.

Time of appearance—July–October.

Food—*Leguminous* plants.

Distribution—Honshu, Shikoku, Kiushu.

5. *Hygia opacus* Uhl. ♀ (*Coreidae*)
(*Tsumaki-herigame*)

Black, short black pubescent; each antennal joint at the base, and the 4th except the base, orange-yellow; occiput with 2 yellow spots; scutellum at the apex orange-yellow; hemelytron with a yellow spot at the middle of costa, membrane fuscous; each connexivum at the hind margin and tarsi yellow. This is common upon the weedy plants.

Time of appearance—July–October.

Food—Weedy plants.

Distribution—Honshu, Kiushu.

6. *Anacanthocoris marginatus* Uhl. ♀ (*Coreidae*)
(*Ō-kumo-herigame*)

Green; antenna carmine-red, the 1st joint on each side with a black stripe, the 2nd and 3rd at the apices, and the 4th largely, fuscous; head grayish white, 2 spots of vertex anteriorly and ocelli carmine-red; pronotum at the sides narrowly black, hemelytron fulvous, with a greenish shade, membrane fulvous; body beneath and legs largely yellow. This is not few upon the *Gramineous* plants.

Time of appearance—June–October.

Food—*Gramineous* plants.

Distribution—Honshu, Shikoku, Kiushu.

7. *Paraplesius unicolor* Scott ♂ (*Coreidae*)
(*Hime-kumo-herigame*)

Fulvous, with a greenish shade; vertex with a short longitudinal groove; ocelli carmine-red, just beyond them with one ^-shaped fuscous marking; the 4th antennal joint dirty yellow, black at the base, just before it yellow; pronotum on each side with a black stripe; tarsi dark fuscous. This is common upon the bamboo-grass and the other *Gramineous* plants.

Time of appearance—May–October.

Food—*Gramineous* plants.

Distribution—Whole Japan.

8. *Adelphocoris variabilis* Uhl. ♀ (*Capsidae*)

(*Futamom-mekuragame*)

Colour variable, commonly yellow, with a greenish shade, short pubescent; head black; antenna infuscated; pronotum in the middle with a black spot, at the anterior margin and on both sides with brownish markings; hemelytron at the clavus fuscous, in the middle of corium with a triangular black patch. This is common upon the weedy plants.

Time of appearance—May–October.

Food—Weedy plants.

Distribution—Hokkaido, Honshu.

9. *Leptocoris varicornis* F. ♂ (*Coreidae*)

(*Kumo-herigame*)

Yellowish green; antenna yellow, longer than the body, at the apex of each joint black, the apical joint brownish, at the base yellow; membrane at the base with a black marking, clavus brown, with numerous punctures. This is common upon the leaves of rice-plant, especially in the southern part of Japan.

Time of appearance—Whole year (except winter).

Food—Rice-plant and the other *Gramineous* plants.

Distribution—Honshu, Shikoku, Kiushu, Okinawa, Formosa, China, Malay, India, Java, etc.

10. *Homoeocerus concoloratus* Uhl. ♂ (*Coreidae*)

(*Azuki-herigame*)

Fuscous, with a greenish shade, body beneath yellow; antenna red, the 2nd joint at the apex black; hemelytron at the middle of the dorsum with a black spot. This is common upon *Phaseolus radiatus* and the other *Leguminous* plants.

Time of appearance—June–October.

Food—*Leguminous* plants.

Distribution—Honshu, Shikoku, Kiushu.

11. *Riptortus clavatus* Thunb. ♂ (*Coreidae*)

(*Hoso-herigame*)

Rufous; pronotum on each side with 2 projections; the hind femur incrassate, with some acute teeth. This is common upon the *Leguminous* and *Gramineous* plants.

Time of appearance—June–October.

Food—*Leguminous* and *Gramineous* plants.

Distribution—Honshu, Shikoku, Kiushu.

12. *Aphanus japonicus* Stål ♀ (*Lygaeidae*)
(*Shiroheri-gaita*)

Black; the 2nd antennal joint at the middle rufous; pronotum grayish white, both margins narrowly red, near the anterior margin with a black speck; 2 spots of the scutellum, the apex, and the hemelytron grayish white, with numerous black specks; membrane black, scattering black specks; legs with yellowish markings. This is found under a stone or a fallen tree.

Time of appearance—June–October.

Food—Weedy plants (?).

Distribution—Hokkaido, Honshu.

13. *Salda recticollis* Horv. ♂ (*Saldidae*)
(*Mizugawa-game*)

Fuscous; head with the tylus and a transverse keel just behind it yellow; antenna short, the 1st, 2nd joints largely yellow; hemelytron with a light shade of an indigo-shade, scattering some white spots, membrane fuscous, veins black, at the apices white; legs yellow, femur beneath and tibia on both sides fuscous. This is common near sewage, catching some small insects for its food.

Time of appearance—Whole year (except winter).

Food—Carnivorous.

Distribution—Hokkaido, Honshu.

14. *Ochrochira fulginosa* Uhl. ♀ (*Coreidae*)
(*Ō-herigame*)

Fuscous; the 4th antennal joint at the apex yellow; hemelytron fulvous; the hind femur compressed, near the apex with a triangular appendage. This is the biggest *Coreid*-insects in Japan, its food-plant being not known.

Time of appearance—July–October.

Food—Unknown.

Distribution—Honshu, Kiushu.

15. *Monanthia conchata* Horv. ♂ (*Tingitidae*)

(*Eguri-gunbai*)

Dark gray; head, antenna, pronotum and legs yellow, the 4th antennal joint at the apex fulvous; vertex, antenna at the anterior side and eyes black; pronotum with yellow keels. This is common upon weedy plants.

Time of appearance—June–October.

Food—Weedy plants.

Distribution—Hokkaido, Honshu.

16. *Pamera hemiptera* Scott ♂ (*Lygaeidae*)

(*Kobane-gaita*)

Black; antenna yellow, the 1st joint at the base, the 3rd at the apex and the 4th fuscous; scutellum at the apex yellow; hemelytron dirty yellow, a medial spot at the anterior margin and an apical spot brownish; membrane fuscous, at the apex with a grayish spot. This is common among the *Gramineous* plants.

Time of appearance—July–October.

Food—Weedy plants (?).

Distribution—Hokkaido, Honshu, Kiushu.

17. *Megalotoma costalis* Stål ♀ (*Coreidae*)

(*Kibane-hoso-herigame*)

Black; antenna somewhat shorter than the body, a speck between the ocelli, a lateral spot of collum, rostrum at the base yellow; pronotum with a yellow stripe; hemelytron yellow or fulvous, at the base fuscous; dorsum with lateral spots yellow, tibia and tarsi largely yellow. This is found upon the *Compositous* plants, but not abundant.

Time of appearance—July–October.

Food—*Compositous* plants.

Distribution—Hokkaido, Honshu.

18. *Stephanatis ambigua* Horv. ♀ (*Tingitidae*)

(*Nashi-gunbai*)

Fuscous; antenna yellow; a central projection on the anterior margin as well as a lateral lobate appendage of pronotum pale yellow, near the middle with a fuscous spot, at the posterior half with 3 pale yellow stripes; hemelytron with a X-mark fuscous; legs pale yellow. This is very

injurious to pear and the other deciduous plants as *Rhododendron*-spp.

Time of appearance—July–October.

Food—*Rosaceous* and *Ericaceous* plants.

Distribution—Whole Japan.

19. *Aradus consentaneus* Horv. ♂ (*Aradidae*)

(*Nami-hiratagame*)

Black; antenna fuscous, the 1st joint fulvous; pronotum on the sides anteriorly white; hemelytron grayish white, corium at the outer half somewhat deeper in colour, its veins brown, membrane fuscous, at the base paler; cauda white. This is found under a bark of rotten trees.

Time of appearance—June–October.

Food—Rotten wood.

Distribution—Hokkaido.

20. *Pachygrontha antennata* Uhl. ♂ (*Lygaeidae*)

(*Higenaga-gaita*)

Dark gray; the 1st antennal joint at the apex fuscous, the 3rd at the upper half and the 4th fuscous; pronotum with a yellow medial stripe; each spot on the sides and a short stripe at the apex of scutellum yellow; hemelytron at the apex with a fuscous spot, membrane grayish white, with an interrupted brown stripe. This has an incrassate anterior femur, suggesting its raptorial character.

Time of appearance—June–October.

Food—Carnivorous.

Distribution—Hokkaido, Honshu.

21. *Cimex lecturalius* L. ♀ (*Cimicidae*)

(*Toko-jirami*)

Body flat, fulvous, with numerous punctures; pronotum cordate in shape; antenna, legs and rostrum fuscous, the larva at the early stage white, being quite difficult to find out, if it is upon a white sheet, only betraying its presence by a fuscous stomach-content.

Time of appearance—Whole year.

Food—Human blood.

Distribution—Cosmopolitan.

22. *Dicyphus lautus* Uhl. ♂ (*Capsidae*)

(*Akaashi-mekuragame*)

Black; vertex with a yellow spot; antenna brown, the 1st joint at the base and the 3rd at the basal half yellow; pronotum in the middle with a yellow ring-spot. Scutellum yellow, with 4 black spots; hemelytron greenish white, clavus rufous, the sutural line black, membrane hyaline, at the apex and base brown spotted. This is common upon weedy plants.

Time of appearance—July–October.

Food—Weedy plants (?).

Distribution—Hokkaido, Honshu.

23. *Aradus lugubris* Fall. ♀ (*Aradidae*)
(*Ko-hirata-game*)

Fuscous; 4 pronotal keels straight; hemelytron grayish, veins black, membrane dark gray, at the sides of veins grayish white; pronotum with the pleura and the hind part of venter fulvous. This is found under the bark of rotten wood.

Time of appearance—July–October.

Food—Rotten wood.

Distribution—Hokkaido, Honshu, Siberia, Europe.

24. *Stephanatis globulifera* Mats. ♀ (*Tingitidae*)
(*Tosaka-gunbai*)

Fuscous; head with the tylus rufous, antenna yellow; pronotal keels yellow; hemelytron with one X-shaped marking fuscous; legs yellow. This is common upon weedy plants.

Time of appearance—July–October.

Food—Weedy plants.

Distribution—Hokkaido, Honshu.

25. *Capsus ater* Jak. ♂ (*Capsidae*)
(*Monki-kuro-mekuragame*)

Black; vertex dirty yellow, with 3 black stripes; antenna at the 3rd and 4th joints dirty yellow; hemelytron with the cuneus orange-yellow, at the apex black; tibia at the apex, and tarsi largely, yellow. This is common upon weedy plants.

Time of appearance—June–October.

Food—Weedy plants.

Distribution—Hokkaido, Honshu, Siberia.

26. *Corizus maculatus* F. ♂ (Coreidae)
(*Mon-hime-herigame*)

Yellowish red; ocelli carmine-red; antenna with the 4th joint at the middle brown; hemelytron somewhat hyaline, on the veins with black specks, membrane scattering pale brownish specks; legs with numerous reddish specks, tarsi at the apices fuscous; cauda at the middle with a black stripe. This is common upon the weedy plants as *Chenopodium*- spp.

Time of appearance—June–October.

Food—Weedy plants.

Distribution—Hokkaido, Honshu, Europe.

27. *Adelphocoris demisus* Horv. ♀ (Capsidae)
(*Usumon-mekuragame*)

Testaceous; antenna black, the 2nd to 5th joints at bases yellow; head, pronotum at the hind margin, scutellum, and femur black; hemelytron with the cuneus yellow, at the apex black, membrane infuscated, veins fuscous. This is common upon weedy plants.

Time of appearance—June–October.

Food—Weedy plants.

Distribution—Hokkaido, Honshu.

28. *Cletus trigonus* Thunb. ♂ (Coreidae)
(*Hari-herigame*)

Fuscous, beneath yellow, with numerous black specks; antenna fulvous, the 1st joint robust, at the outer side with a black stripe, the 4th short, brown; scutellum at the apex yellow; hemelytron at the base yellow, at the hind margin near the middle with a yellow speck, membrane fuscous; legs yellow, on each side with a black stripe. This is common upon the leaves of rice-plant, being local.

Time of appearance—June–October.

Food—Rice-plant and the other *Gramineous* plants.

Distribution—Honshu, Shikoku, Kiushu, Okinawa, Formosa, China, Philippines, India.

29. *Corizus crassicornis* F. ♀ (Coreidae)
(*Momoguro-hime-herigame*)

Grayish brown, body beneath fuscous, scattering reddish brown spots;

ocelli on each side with a black spot, the 1st joint of antenna anteriorly and posteriorly with each a black stripe; hemelytron grayish white, veins yellow, black spotted; legs densely black spotted, the hind femur at the base internally black, tibia and tarsi at the apices fuscous. This is common among weedy plants.

Time of appearance—June–August.

Food—Weedy plants.

Distribution—Hokkaido, Honshu, Siberia, Europe.

30. *Pyrrhocoris tibialis* Stål ♀ (*Pyrrhocoridae*)
(*Futa-hoshigame*)

Fuscous, body beneath black; vertex with black spots, head in the middle with a yellowish stripe, antenna black, the 1st and 2nd joints at the apices yellow; pronotum in the middle with a yellow stripe; corium in the middle with a black spot; legs black, femur at the apex and tarsi externally pale yellow. This is found under a stone or a fallen wood, being common especially in spring.

Time of appearance—April–August.

Food—Unknown.

Distribution—Hokkaido, Honshu.

Plate XXII

1. **Nabis reuteri** Jak. ♀ (Reduviidae)
(*Makiba-sashigame*)

Grayish yellow (♂) to dark yellow (♀); head with a fuscous stripe, behind the antenna fuscous spotted; antenna yellow, the 4th joint fuscous; pronotum in the middle with a black stripe (♂) or with fuscous spots (♀); hemelytron with numerous fuscous specks. This is common in meadows, being carnivorous in its habit.

Time of appearance—July–October.

Food—Carnivorous (in the following *Reduviid*-insects the food is omitted).

Distribution—Whole Japan, Siberia, Europe.

2. **Pygolampis cognatus** Horv. ♀ (Reduviidae)
(*Hoso-sashigame*)

Grayish brown, short gray pubescent; head anteriorly in the middle with a forked fuscous marking; pronotum with 3 transverse grooves, at the sides fuscous striped; the fore and middle tibiae on both sides and in the middle with a fuscous ring-spot; venter black. This is not few in the vicinity of Sapporo.

Time of appearance—July–October.

Distribution—Hokkaido, Honshu.

3. **Orthunaga biguttata** Uhl. ♀ (Reduviidae)
(*Gomi-ashinaga-sashigame*)

Fuscous, fulvous pubescent; antenna at the apex of the 2nd and the basal part of the 3rd pale yellow; pronotum in the middle with 2 yellow stripes; hemelytron subhyaline, veins at the bases fuscous, costa rufous, the apical veins being fuscous; legs yellow, femur fuscous marked. This is widely distributed in Japan, but not numerous, resembling somewhat a spider.

Time of appearance—July–October.

Distribution—Honshu.

4. **Oncocephalus pilicornis** H. S. ♀ (Reduviidae)
(*Tobiuro-sashigame*)

Testaceous; the 1st joint of antenna at the innerside fuscous striped;

scutellum densely granulated, in the middle fulvous; hemelytron in the middle with an interrupted black stripe; femur with 2 black stripes. This is not few in the Kiushu-district.

Time of appearance—July–October.

Distribution—Honshu, Kiushu, Okinawa, Formosa, China, India.

5. Endochus stalianus Horv. ♀ (*Reduviidae*)
(*Higenaga-sashigame*)

Rufous, head on both sides and beneath yellow, collum fulvous; antenna yellow, the 1st joint at the base fuscous; pronotum at the anterior half fulvous, at the posterior half on the sides and in the middle with a yellowish stripe; scutellum yellow, at the base dirty yellow; hemelytron at the clavus brown, corium red, near the apex fuscous spotted.

Time of appearance—July–October.

Distribution—Honshu, Shikoku, Kiushu.

6. Physopelta gutta Burm. ♀ (*Pyrrhocoridae*)
(*Akagi-hoshigame*)

Brown; antenna black, the 3rd joint at the base pale yellow, at the apex grayish brown; vertex with a brown stripe; pronotum at the periphery testaceous, hemelytron with a spot and the membrane black. This is common upon the young shoots of *Mallotus*-spp.

Time of appearance—July–October.

Food—*Mallotus*-spp.

Distribution—Honshu, Shikoku, Kiushu, Okinawa, Formosa, China, India.

7. Lygaeus equestris L. ♀ (*Lygaeidae*)
(*Madara-nagagame*)

Carmine-red; pronotum at the anterior margin, scutellum as well as the markings of the hemelytron black; membrane in the middle with a white spot; legs dark grayish. This is common upon the *Umbelliferous* plants, mostly hibernating near the houses.

Time of appearance—July–October.

Food—*Umbelliferous* plants.

Distribution—Hokkaido, Honshu, Korea, China, Siberia, Europe.

8. Cydnocoris russatus Stål ♀ (*Reduviidae*)
(*Aka-sashigame*)

Vermilion-red; antenna, venter and legs black; the 3rd antennal joint fuscous, the 4th fulvous; hemelytron vermilion-red, membrane infuscated; pleura, pectus, each connexival band black. This is common in the Kiushu-district.

Time of appearance—July–October.

Distribution—Honshu, Shikoku, Kiushu, Formosa, China, Philippines.

9. *Lygaeus cruciger* Motsch. ♀ (*Lygaeidae*)
(*Juji-nagagame*)

Carmine-red, black spotted; face black, near the middle with a spot; antenna, scutellum, one X-shaped marking of the hemelytron, and legs black. This is not numerous, being found among the weedy plants.

Time of appearance—July–October,

Food—Weedy plants (?).

Distribution—Hokkaido, Honshu, Kiushu, Siberia.

10. *Dysdercus cingulatus* F. ♂ (*Pyrrhocoridae*)
(*Aka-hoshigame*)

Vermilion-red; antenna black, the 1st joint red; pronotum at the anterior margin pale yellow, posteriorly with a brown spot; scutellum fuscous; hemelytron in the middle with a roundish black patch, membrane black, at the outer margin narrowly grayish white, connexivum white. This is very injurious to the cotton-plant in Formosa.

Time of appearance—May–October (in Formosa whole year).

Food—Cotton plant.

Distribution—Okinawa, Formosa, China, Philippines, Malay, India.

11. *Pirates turpis* Wk. ♂ (*Reduviidae*)
(*Kuromon-sashigame*)

Black, short grayish pubescent, mingling with a few long black hairs; hemelytron fuscous, a stripe at the base of clavus, a geniculated stripe and an oval patch on the membrane black; tarsi brown. This is not numerous, being found under a stone or a fallen wood especially in spring.

Time of appearance—May–October.

Distribution—Hokkaido, Honshu, China.

12. *Labiocoris insignis* Dist. ♂ (*Reduviidae*)
(*Kuroba-ka-sashigame*)

Vermilion-red, black spotted; vertex testaceous, ocelli red; hemelytron black, costa and scutellum vermilion-red, the cauda beneath brown. This is not numerous, being found in the central part of Japan.

Time of appearance—June–October.

Distribution—Honshu.

13. *Sirthenea flavipes* Stål ♀ (*Reduviidae*)
(*Kiuro-sashigame*)

Yellow, vertex on each lateral side with a fuscous stripe, ocelli at the peripheries and collum on the sides black; pronotum at the posterior 1/3 fuscous; scutellum black, at the base yellow; hemelytron black, with yellowish parts. This is not few in the middle part of Japan.

Time of appearance—July–October.

Distribution—Honshu, Shikoku, Kiushu, Formosa, China, Philippines, India.

14. *Dysdercus crucifer* Mats. ♂ (*Pyrrhocoridae*)
(*Shiro-juji-hoshigame*)

Vermilion-red, hemelytron with a pale yellow X-shaped marking, antenna, a pronotal spot at the anterior margin, scutellum, hemelytron at the clavus, a geniculated marking pale yellow, membrane, legs, pectus fuscous; antenna at the base red; pronotum at the anterior margin and connexivum pale yellow. This is common in Okinawa.

Time of appearance—July–October.

Food—Unknown.

Distribution—Okinawa, Formosa, Singapore.

15. *Acanthaspis cincticrus* Stål ♀ (*Reduviidae*)
(*Hari-sashigame*)

Black, short white pubescent, mixing some long black hairs; the 1st antennal joint at the middle fulvous; pronotum with the humeral projections pale yellow; scutellum with spinous projections yellow; hemelytron with a knife-shaped pale yellow patch, veins velvety black; legs with yellow markings. This is not numerous.

Time of appearance—July–October.

Distribution—Hokkaido, Honshu, Kiushu.

16. *Nabis apterus* F. ♀ (*Reduviidae*)
(*Harabiro-sashigame*)

Fuscous; frons and compound eyes rufous, ocellar region on the sides yellow, collum with a yellow spot; rostrum and antenna yellow, the latter at the side of the 1st joint and the apex of the 2nd fuscous; pronotum fuscous, scutellum on each side with a yellow spot, with fuscous part; at the lateral sides of abdomen yellow spotted. This is common in the vicinity of Sapporo, feeding on various *Tortricid*-insects.

Time of appearance—July–October.

Distribution—Hokkaide, Honshu, Siberia, Europe.

17. *Velinus nodipes* Uhl. ♀ (*Reduviidae*)
(*Yani-sashigame*)

Black; the 1st antennal joint long, with numerous yellowish spots somewhat equidistantly; gula yellow; hemelytron fuscous; femur and tibia with numerous knotty protuberances. This secretes a glutinous substance from the abdomen and attaches some rubbishes lying near by.

Time of appearance—July–October.

Distribution—Honshu, Kiushu.

18. *Prostemma hilgendorfi* Stein ♂ (*Reduviidae*)
(*Ashibuto-sashigame*)

Black; head at the apex of tylus fulvous, rostrum and antenna yellow; pronotum, scutellum posteriorly, and hemelytron reddish yellow; membrane fuscous; the hind part of pectus and the dorsal part of abdomen rufous. This is found on a sandy region near the river side.

Time of appearance—July–October.

Distribution—Hokkaido, Honshu.

19. *Ectomocoris biguttulus* Stål ♀ (*Reduviidae*)
(*Kiboshi-sashigame*)

Black; pronotum with a greenish shade; antenna brown, head short grayish white pubescent, with an oblong yellow patch; membrane infuscated, at the base with a yellow spot; hind connexival angles yellow; tibiae and tarsi short golden pubescent. This is not rare in Okinawa.

Time of appearance—June–October.

Distribution—Okinawa, Formosa, India.

20. *Rhinocoris leucospilus* Stål ♀ (*Reduviidae*)
(*Mon-shiro-sashigame*)

Black; the anterior part of ocelli and the interspaces with each a pale yellow spot; head beneath pale yellow; hemelytron black; propleura, and prosternum in the middle, pale yellow; connexivum black, with a row of white spots. This is common all over Japan, devouring various caterpillars.

Time of appearance—July–October.

Distribution—Saghalien, Hokkaido, Honshu, Siberia.

21. *Ectrychotes haematogaster* Burm. ♂ (*Reduviidae*)
(*Birodo-sashigame*)

Dark indigo; antenna at the apex fulvous; pronotum on the sides fuscous; hemelytron fuscous; coxa yellow; connexivum red; the 4th, 5th and 6th abdominal segments at the posterior margins black spotted. This is not few in the vicinity of Kyoto.

Time of appearance—July–October.

Food—Carnivorous.

Distribution—Honshu.

22. *Ectrychotes violaceus* Hahn ♂ (*Reduviidae*)
(*Kurohane-ruri-sashigame*)

Dark indigo; antenna fuscous, with long black hairs; hemelytron velvety black; abdomen on the sides testaceous, at the inner part carmine-red, with 2 black spots; venter black, with carmine-red parts; legs black with red and yellow markings. This is not few in the vicinity of Tokyo.

Time of appearance—July–October.

Distribution—Honshu.

23. *Conorhinus rufofasciatus* Deg. ♀ (*Reduviidae*)
(*Akasuji-sashigame*)

Fuscous; antenna with the 4th and 5th joints yellow; at the frons finely granulated; pronotum and scutellum densely granulated; hemelytron with the longitudinal veins and a medial spot testaceous, connexivum and each hind margin of the same segments yellow. This is quite few in Okinawa, but common in Formosa and China; this sucks the human blood as in the bed-bug.

Time of appearance—Whole year.

Food—Human blood.

Distribution—Okinawa, Formosa, China, India.

24. *Rhinocoris ornatus* Uhl. ♀ (*Reduviidae*)
(*Ak. heri-sashigame*)

Black, with yellow markings; pronotum at the periphery, except the medial constricted portion, and abdomen at the sides carmine-red. This is not few in the central part of Japan.

Time of appearance—July–October.

Distribution—Honshu, Shikoku, Kiushu.

25. *Haematoloecha nigrorufa* Stål ♀ (*Reduviidae*)
(*Akashima-sashigame*)

Vermilion-red, beneath black; head, antenna, pronotal groove, scutellum and legs fuscous; trochanter paler; dorsal part of abdomen fuscous, on the sides vermilion-red, each segment at the posterior margin infuscated. This is not few in the vicinity of Tokyo.

Time of appearance—July–October.

Distribution—Honshu, Kiushu.

Plate XXIII

1. **Gerris paludum F.** ♀ (Gerridae)
(*Hime-amenbo*)

Fuscous, beneath silvery white, somewhat yellowish pubescent; pronotal stripes and the lateral sides of mesonotum rufous; legs yellow, femur at the outer side black striped. This is common upon the water-surface, being carnivorous in its habit.

Time of appearance—Whole year (hibernating).

Food—Carnivorous.

Distribution—Whole Japan.

2. **Halobates sericeus Esch.** ♀ (Gerridae)
(*Umi-amenbo*)

Gray, silky white pubescent; a spot on the occiput and the lateral sides of pronotum testaceous; antenna and legs black; coxae and trochanters with testaceous markings; venter yellow. This is common upon the water-surface of the Pacific Ocean, widely distributed, often seen skipping upon the waters.

Time of appearance—whole year.

Food—Carnivorous.

Distribution—Honshu, Shikoku, Kiushu, Okinawa, China, India.

3. **Aquarius elongatus Uhl.** ♀ (Gerridae)
(*Ō-amenbo*)

Fuscous; pro- and mesonotum yellowish striped; hemelytron at the inner side fulvous; body beneath gray; coxa beneath yellow. This is common in the central part of Japan, being the biggest *Gerrid*-insect in Japan.

Time of appearance—Whole year (hibernating).

Food—Carnivorous.

Distribution—Honshu, Shikoku, Kiushu.

4. **Metrocoris histrio Buch.** ♂ (Gerridae)
(*Shima-amenbo*)

Dirty yellow, black striped and spotted; abdomen black, each segment at the hind margin with a yellow tinge. This is common upon the running water of mountain-brooks, some of them being macropterous.

Time of appearance—June–October.]

Food—Carnivorous.

Distribution—Whole Japan.

5. *Hydrometra vittata* Stål ♀ (*Gerridae*)
(*Ito-amenbo*)

Fuscous; mesonotum with a sutural whitish stripe; hemelytron at the costa and near the dorsum white striped; legs fulvous. This is common upon the water-surface of ponds, often running upon a water-plant.

Time of appearance—June–October.

Food—Carnivorous.

Distribution—Whole Japan.

6. *Sphaerodema japonicum* Vuill. ♂ (*Belostomidae*)
(*Kooi-mushi*)

Fuscous; fore tarsi with no claw, the middle and hind legs fuscous spotted. This is common in ponds, the male mostly carrying the egg of the female upon the back.

Time of appearance—Whole year.

Food—Carnivorous.

Distribution—Whole Japan.

7. *Pelogonus flavomarginatus* Scott ♀ (*Pelagonidae*)
(*Me-mizumushi*)

Fuscous, fulvous marked; head punctured and wrinkled; hemelytron scattering obsolete bluish white spots; body beneath grayish white pubescent. This is common in the central part of Japan, the larva is adapted for swimming, the imago seen on a sandy region near the river-side.

Time of appearance—July–October.

Food—Carnivorous.

Distribution—Honshu, Shikoku, Kiushu.

8. *Laccotrephes ruber* L. ♀ (*Nepidae*)
(*Taiko-uchi*)

Fulvous to fuscous, densely granulated; caudal appendages longer than the body; legs with no marking. This is common in the central part of Japan, being absent in Hokkaido, often seen upon flowers.

Time of appearance—June–October.

Food—Carnivorous (often upon flowers).

Distribution—Honshu, Shikoku, Kiushu, Formosa, China, India.

9. *Kirkaldyia deyrollei* Vuill. ♀ (*Belostomidae*)
(*Ta-game*)

Fuscous; pronotum at the hind margin with a transverse groove; hemelytron hard chitinized, the hind wing pale yellow, at the base deeper in colour; the middle and hind legs fuscous spotted. This is common in Japan, but rare in Hokkaido, being very injurious to the fish-culture, often seen eating frogs.

Time of appearance—July–October.

Food—Carnivorous.

Distribution—Whole Japan.

10. *Ranatra chinensis* Mayr ♀ (*Nepidae*)
(*Mizu-kamakiri*)

Fulvous; pronotum on each side with a lobate appendge; scutellum somewhat quadrate; hemelytron not reached to the cauda; body beneath dirty yellow. This is common in Japan, seen commonly in the water swimming like a rocket.

Time of appearance—July–October.

Food—Carnivorous.

Distribution—Whole-Japan.

11. *Notonecta bivittata* Mats. ♂ (*Notonectidae*)
(*Okinawa-matsumo*)

Testaceous; head and pronotum with no marking; scutellum black, scattering fine granules; hemelytron rufous, scattering black specks, at the apex and the membrane, except the base, black; hind wing at the base vermilion-red. This is not rare in Okinawa.

Time of appearance—May–October.

Food—Carnivorous.

Distribution—Okinawa.

12. *Notonecta triguttata* Motsch. ♂ (*Notonectidae*)
(*Nami-matsumo*)

Dirty yellow; scutellum black; hemelytron with 2 black spots, when the wings are closed. This is common in any pond, seen swimming with

the back down. It is called the *boat-man*, its form of swimming being like a boat-man with oars.

Time of appearance—Whole year.

Food—Carnivorous.

Distribution—Whole Japan.

13. *Aphelocheirus nawae* Mats. ♂ (*Aphelocheiridae*)
(*Toge-nabebuta*)

Yellow, with fuscous markings; in the male the dorsal part of abdomen black, in the middle and at the sides with yellow patches in a longitudinal row. This is common in the vicinity of Gifu, being found in a gravelly bed of the running water.

Time of appearance—July-October.

Food—Carnivorous.

Distribution—Honshu, Kiushu.

14. *Corixa substriata* Uhl. ♀ (*Corixidae*)
(*Ko-fusen*)

Yellow; pronotum and hemelytron fuscous, the former with about 7 yellow bands, the latter with numerous short yellowish lines. This is common especially in the central part of Japan, producing an agreeable sound in a cup filled with the water when it is swimming.

Time of appearance—May-October.

Food—Carnivorous.

Distribution—Whole-Japan.

15. *Anisops scutellaris* H. S. ♀ (*Notonectidae*)
(*Ko-matsumo*)

Pale yellow; head yellow; scutellum fuscous, at the hind margin pale yellow; hemelytron hyaline, whitish, when the wings are closed presenting a fuscous part at the dorsum; the hind tibia beneath black. This is common in the central part of Japan in ponds, where the water-plants are growing.

Time of appearance—Whole year.

Food—Carnivorous.

Distribution—Honshu, Shikoku, Kiushu, Bonin.

16. *Corixa distanti* Kirk. ♀ (*Corixidae*)
(*Nami-fusen*)

Yellow; pronotum and hemelytron fuscous, the former with about 10 yellowish bands, the latter with numerous bands and fine wavy markings yellow. This is the biggest *Corixid*-insect in Japan, being common in the vicinity of Sapporo.

Time of appearance—May–October.

Food—Carnivorous.

Distribution—Hokkaido, Honshu.

17. *Banatra sordidula* Dohrn ♀ (*Nepidae*)
(*Hime-mizukamakiri*)

Resembles *B. chinensis* Mayr, but differs from it in having a smaller body, the anterior femur beneath black, scutellum somewhat oval, the caudal appendages being shorter than the abdomen. This is not few in the central part of Japan, being found in any pond where fishes are living.

Time of appearance—May–October.

Food—Carnivorous.

Distribution—Honshu, Shikoku, Kiushu.

18. *Sphaerodema rusticum* L. ♂ (*Belostomidae*)
(*Okinawa-kooi*)

Resembles *S. japonicum* Vuill. (Pl. XXIII, f. 6), but differs from it in having a smaller body, colour fulvous, pronotum posteriorly broader, the transverse groove obsolete, punctures smaller, hemelytron lacking the reticulated marking. This is common in the subtropical region of the Japan-empire.

Time of appearance—Whole year.

Food—Carnivorous.

Distribution—Okinawa, Formosa, China, India.

19. *Naucoris exclamationis* Scott ♂ (*Naucoridae*)
(*Koban-mushi*)

Yellow, with a light shade of green; ventral side of abdomen dirty yellow, at the sides with a row of fuscous spots. This is common in the central part of Japan, being abundant in the ponds where the water-

plants are growing; it is injurious to the fish-culture.

Time of appearance—May–October.

Food—Carnivorous.

Distribution—Honshu, Shikoku, Kiushu.

Plate XIX

第十九圖

- | | | |
|--|---------------|------------|
| 1. <i>Alcimocoris borealis</i> Dist. | (♂)ウシガメ | P. 75(110) |
| 2. <i>Calliphara excellens</i> Burm. | (♀)ナナホシキンガメ | P. 75(110) |
| 3. <i>Coptosoma biguttulum</i> Motsch. | (♂)ヒメマルガメ | P. 75(110) |
| 4. <i>Poecilocoris lewisi</i> Dist. | (♂)アカスヂキンガメ | P. 75(110) |
| 5. <i>Eysarcoris melanocephalus</i> F. | (♂)クロヅマルガメ | P. 75(111) |
| 6. <i>Nezara antennata</i> Scott | (♂)アラクサガメ | P. 75(111) |
| 7. <i>Eysarcoris lewisi</i> Dist. | (♀)レウキスシラホシガメ | P. 76(111) |
| 8. <i>Chrysocoris grandis</i> Thunb. | (♂)オホキンガメ | P. 76(111) |
| 9. <i>Bolbocoris reticulata</i> Dall. | (♀)ハナダカガメ | P. 76(112) |
| 10. <i>Menida violacea</i> Motsch. | (♂)シラホシムラサキガメ | P. 76(112) |
| 11. <i>Eysarcoris ventralis</i> West. | (♀)シラホシガメ | P. 76(112) |
| 12. <i>Palomera angulosa</i> Motsch. | (♀)エゾアヲガメ | P. 77(112) |
| 13. <i>Sehirus niveimarginatus</i> Scott | (♂)シロヘリヂガメ | P. 77(113) |
| 14. <i>Plautia stáli</i> Scott | (♀)ハネナガアヲガメ | P. 77(113) |
| 15. <i>Brachyplatys subaeneus</i> West. | (♀)ツヤマルガメ | P. 77(113) |
| 16. <i>Menida scotti</i> Jak. | (♂)スコットガメ | P. 77(114) |
| 17. <i>Scotinophara lurida</i> Burm. | (♂)クロガメ | P. 77(114) |
| 18. <i>Coptosoma punctissimum</i> Mont. | (♀)マルガメ | P. 78(114) |
| 19. <i>Dolycoris baccarum</i> L. | (♀)ブチヒゲガメ | P. 78(114) |
| 20. <i>Graphosoma rubrolineatum</i> West. | (♂)アカスヂガメ | P. 78(115) |
| 21. <i>Adrisa magna</i> Uhl. | (♂)ヨコヅナヂガメ | P. 78(115) |
| 22. <i>Brachyaulax miyakonus</i> Mats. | (♂)ミヤコキンガメ | P. 78(115) |
| 23. <i>Cantao ocellatus</i> Thunb. | (♀)アカギガメ | P. 78(115) |
| 24. <i>Zicrona coerulea</i> L. | (♂)ルリガメ | P. 79(116) |
| 25. <i>Gnathoconus triguttatus</i> Motsch. | (♀)ミツボシヂガメ | P. 79(116) |

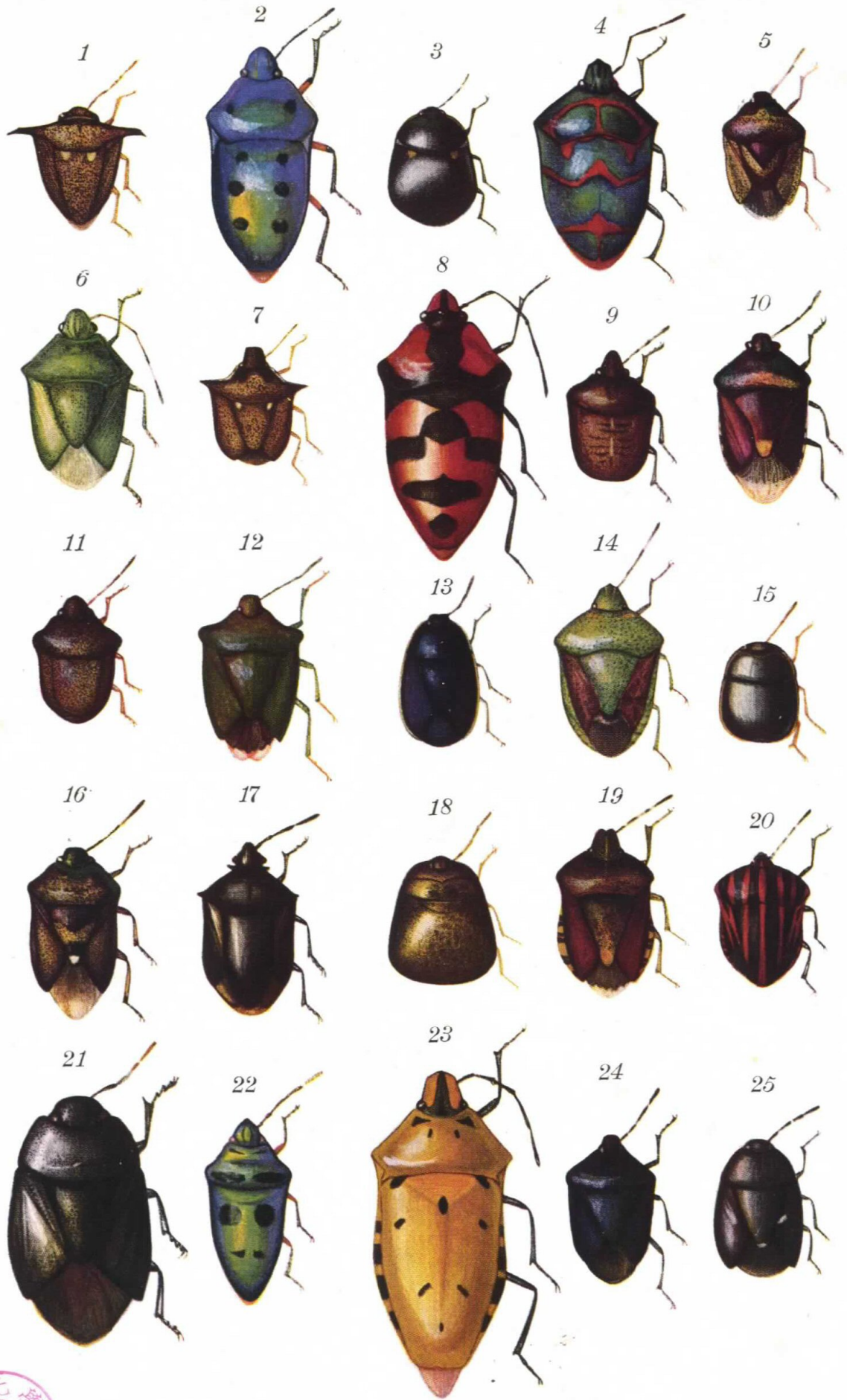


Plate XX

第二十圖

- | | | |
|---|--------------|------------|
| 1. <i>Urochela jozankeana</i> Mats. | (♀) ヨツモンガメ | P. 80(117) |
| 2. <i>Carpocoris pudicus</i> Poda | (♀) ムラサキガメ | P. 80(117) |
| 3. <i>Sastragela scutellata</i> Scott | (♂) モンキツノガメ | P. 80(117) |
| 4. <i>Halyomorpha picus</i> F. | (♂) クサギガメ | P. 80(117) |
| 5. <i>Gnopsis affinis</i> Uhl. | (♂) エビイロガメ | P. 80(118) |
| 6. <i>Elasmostethus matsumurae</i> Horv. | (♀) ベニモンガメ | P. 80(118) |
| 7. <i>Aenaria lewisi</i> Scott | (♂) シロヘリガメ | P. 81(118) |
| 8. <i>Erthesina fullo</i> Thunb. | (♂) キマダラガメ | P. 81(119) |
| 9. <i>Urochela luteovaria</i> Dist. | (♂) ナシガメ | P. 81(119) |
| 10. <i>Aenaria assimulans</i> Dist. | (♀) イネガメ | P. 81(119) |
| 11. <i>Acanthosoma labiduroides</i> Jak. | (♂) ハサミガメ | P. 81(119) |
| 12. <i>Picromerus lewisi</i> Scott | (♀) クチブトガメ | P. 82(120) |
| 13. <i>Aelia fieberi</i> Scott | (♀) ウヅラガメ | P. 82(120) |
| 14. <i>Agonoscelis nubila</i> F. | (♂) アヤナミガメ | P. 82(120) |
| 15. <i>Acanthosoma denticauda</i> Jak. | (♀) セアカツノガメ | P. 82(121) |
| 16. <i>Cantheconidea furcellata</i> Wolf. | (♀) キシモフリガメ | P. 82(121) |
| 17. <i>Eurydema rugosum</i> Motsch. | (♂) ナガメ | P. 83(121) |
| 18. <i>Pentatoma japonicum</i> Dist. | (♀) ツノアラガメ | P. 83(121) |
| 19. <i>Urostylis westwoodi</i> Scott | (♂) クヌギガメ | P. 83(121) |
| 20. <i>Carbula humerigera</i> Uhl. | (♀) トゲガメ | P. 83(122) |
| 21. <i>Megymenum tauriforme</i> Dist. | (♀) ノコギリガメ | P. 83(122) |
| 22. <i>Carpocoris fuscispinus</i> Boh. | (♂) ヨツボシガメ | P. 83(122) |
| 23. <i>Parastrachia fulgens</i> Dist. | (♀) ベニクチブトガメ | P. 84(122) |
| 24. <i>Nezara viridula</i> L. | (♀) アヲガメ | P. 84(123) |
| 25. <i>Lelia decempunctata</i> Motsch. | (♂) トホシガメ | P. 84(123) |

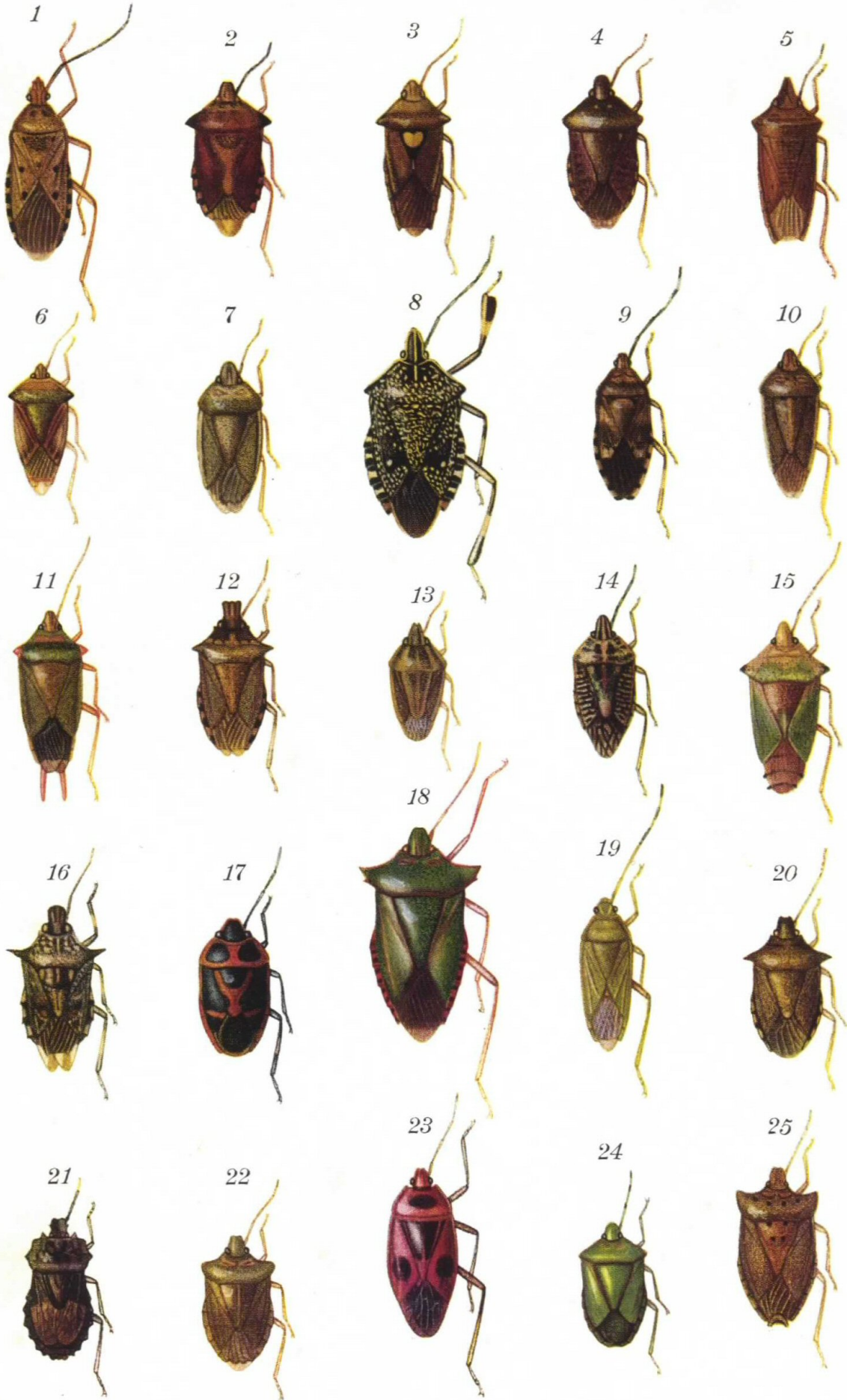


Plate XXI

第二十一圖

1. *Acanthocoris sordidus* Thunb. (♀)ホホヅキヘリガメ(ホホヅキガメ) P. 85(124)
2. *Syromastes marginatus* L. (♂)ナミヘリガメ(ヘリガメ) P. 85(124)
3. *Leptoglossus membranaceus* F. (♂)アシビロヘリガメ P. 85(124)
4. *Homoeocerus dilatatus* Horv. (♀)ハラビロヘリガメ P. 85(124)
5. *Hygia opacus* Uhl. (♀)ツマキヘリガメ P. 85(125)
6. *Anacanthocoris marginatus* Uhl. (♀)オホクモヘリガメ P. 85(125)
7. *Paraplesius unicolor* Scott (♂)ヒメクモヘリガメ(ヒメクモガメ) P. 86(125)
8. *Adelphocoris variabilis* Uhl. (♀)フタモンメクラガメ P. 86(126)
9. *Leptocorisa varicornis* F. (♂)クモヘリガメ(クモガメ) P. 86(126)
10. *Homoeocerus concoloratus* Uhl. (♂)アヅキヘリガメ(アヅキガメ) P. 86(126)
11. *Riptortus clavatus* Thunb. (♂)ホソヘリガメ P. 86(126)
12. *Aphanus japonicus* Stål (♀)シロヘリガイタ P. 87(127)
13. *Salda recticollis* Horv. (♂)ミヅギハガメ P. 87(127)
14. *Ochrochira fuliginosa* Uhl. (♀)オホヘリガメ P. 87(127)
15. *Monanthia conchata* Horv. (♂)エグリグンバイ P. 87(128)
16. *Pamera hemiptera* Scott (♂)コバネガイタ P. 87(128)
17. *Megalotoma costalis* Stål (♀)キバネホソヘリガメ P. 88(128)
18. *Stephanatis ambigua* Horv. (♀)ナシグンバイ(グンバイムシ) P. 88(128)
19. *Aradus consentaneus* Horv. (♂)ナミヒラタガメ(ヒラタガメ) P. 88(129)
20. *Pachygrontha antennata* Uhl. (♂)ヒゲナガガイタ P. 88(129)
21. *Cimex lecturalius* L. (♀)トコジラミ(南京蟲) P. 88(129)
22. *Dicyphus lautus* Uhl. (♂)アカアシメクラガメ P. 88(129)
23. *Aradus lugubris* Fall. (♀)コヒラタガメ P. 89(130)
24. *Stephanatis globulifera* Mats. (♀)トサカグンバイ P. 89(130)
25. *Capsus ater* Jak. (♀)モンキクロメクラガメ P. 89(130)
26. *Corizus maculatus* F. (♂)モンヒメヘリガメ(モンヒメガメ) P. 89(131)
27. *Adelphocoris demisus* Horv. (♀)ウスモンメクラガメ P. 89(131)
28. *Cletus trigonus* Thunb. (♂)ハリヘリガメ(ハリガメ) P. 90(131)
29. *Corizus crassicornis* F. (♀)モモグロヒメヘリガメ P. 90(131)
30. *Pyrrhocoris tibialis* Stål (♀)フタホシガメ(フタホシガイタ) P. 90(132)

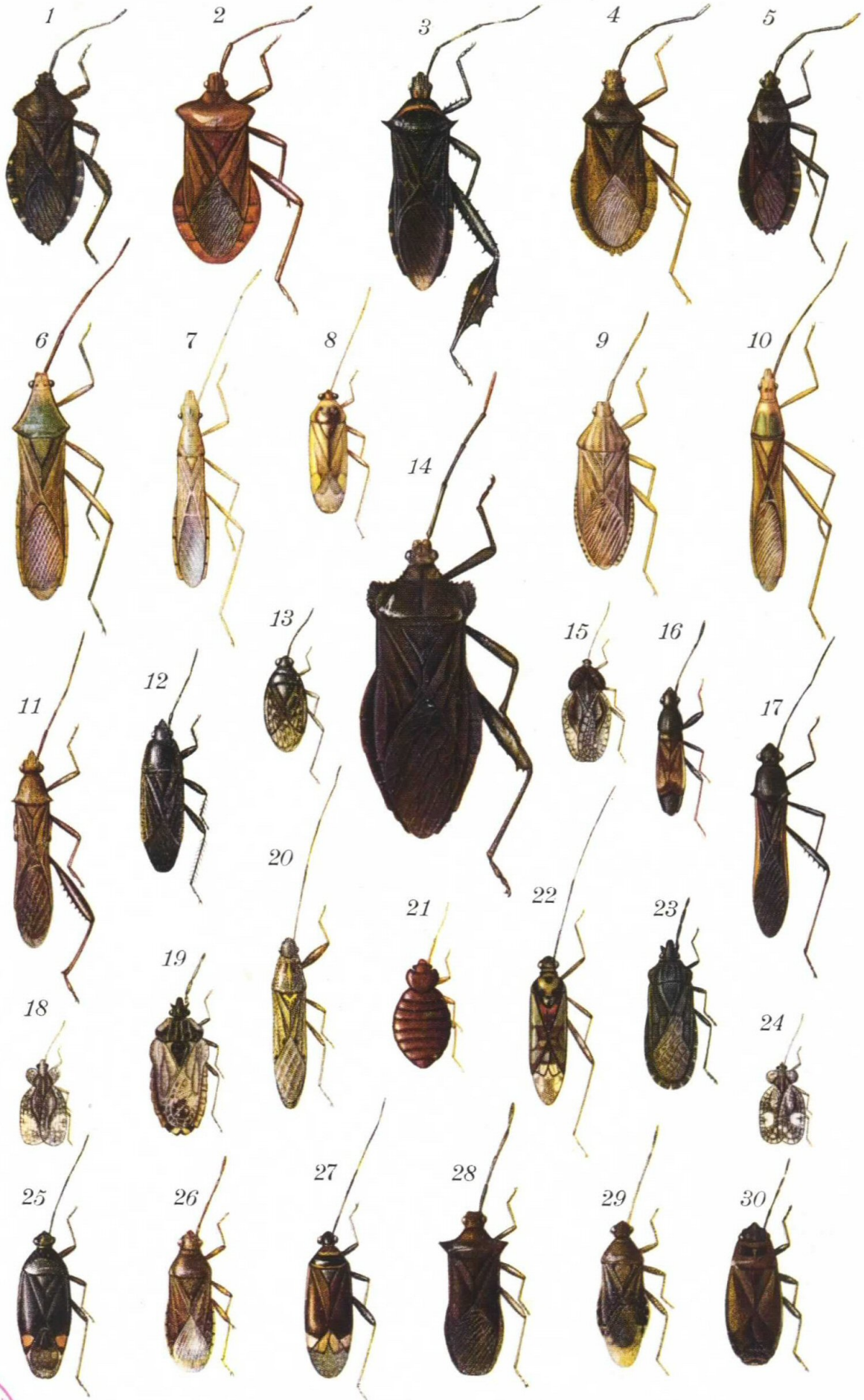


Plate XXII

第二十二圖

- | | | |
|--|-------------------|------------|
| 1. <i>Nabis reuteri</i> Jak. | (♀)マキバサシガメ | P. 91(133) |
| 2. <i>Pygolampis cognatus</i> Horv. | (♀)ホソサシガメ | P. 91(133) |
| 3. <i>Orthunaga biguttata</i> Uhl. | (♀)ゴミアシナガサシガメ | P. 91(133) |
| 4. <i>Oncocephalus pilicornis</i> H. S. | (♀)トビイロサシガメ | P. 91(133) |
| 5. <i>Endochus stâlianus</i> Horv. | (♀)ヒゲナガサシガメ | P. 91(134) |
| 6. <i>Physopelta gutta</i> Burm. | (♀)アカギホシガメ | P. 91(134) |
| 7. <i>Lygaeus equestris</i> L. | (♀)マダラナガガメ(マダラガメ) | P. 92(134) |
| 8. <i>Cydnocoris russatus</i> Stål | (♀)アカサシガメ | P. 92(134) |
| 9. <i>Lygaeus cruciger</i> Motsch. | (♀)ジフジナガカメ(ジフジガメ) | P. 92(135) |
| 10. <i>Dysdercus cingulatus</i> F. | (♂)アカホシガメ | P. 92(135) |
| 11. <i>Pirates turpis</i> Wk. | (♂)クロモンサシガメ | P. 92(135) |
| 12. <i>Labidocoris insignis</i> Dist. | (♂)クロバアカサシガメ | P. 92(135) |
| 13. <i>Sirthenea flavipes</i> Stål | (♀)キイロサシガメ | P. 93(136) |
| 14. <i>Dysdercus crucifer</i> Mats. | (♂)シロジフジホシガメ | P. 93(136) |
| 15. <i>Acanthaspis cincticus</i> Stål | (♀)ハリサシガメ | P. 93(136) |
| 16. <i>Nabis apterus</i> F. | (♀)ハラビロサシガメ | P. 93(137) |
| 17. <i>Velinus nodipes</i> Uhl. | (♀)ヤニサシガメ | P. 93(137) |
| 18. <i>Prostemma hilgendorfi</i> Stein | (♂)アシブトサシガメ | P. 94(137) |
| 19. <i>Ectomocoris biguttulus</i> Stål | (♀)キボシサシガメ | P. 94(137) |
| 20. <i>Rhinocoris leucospilus</i> Stål | (♀)モンシロサシガメ | P. 94(138) |
| 21. <i>Ectrychotes haematogaster</i> Burm. | (♂)ピロウドサシガメ | P. 94(138) |
| 22. <i>Ectrychotes violaceus</i> Hahn | (♂)クロハネルリサシガメ | P. 94(138) |
| 23. <i>Conorhinus rufofasciatus</i> Deg. | (♀)アカスヂサシガメ | P. 94(138) |
| 24. <i>Rhinocoris ornatus</i> Uhl. | (♀)アカヘリサシガメ | P. 95(139) |
| 25. <i>Haematoloecha nigrorufa</i> Stål | (♀)アカシマサシガメ | P. 95(139) |



Plate XXIII

第二十三圖

1. *Gerris paludum* F. (♀)ヒメアメンボ(ヒメカハグモ) P. 96(140)
2. *Halobates sericeus* Esch. (♀)ウミアメンボ P. 96(140)
3. *Aquarius elongatus* Uhl. (♀)オホアメンボ(オホカハグモ) P. 96(140)
4. *Metrocoris histrio* Buch. (♂)シマアメンボ(シマカハグモ) P. 96(140)
5. *Hydrometra vittata* Stål (♀)イトアメンボ(イトカハグモ) P. 96(141)
6. *Sphaerodema japonicum* Vuill. (♂)コヲヒムシ(子負蟲) P. 96(141)
7. *Pelogonus flavomarginatus* Scott (♀)メミヅムシ P. 97(141)
8. *Laccotrephes ruber* L. (♀)タイコウチ(紅娘華) P. 97(141)
9. *Kirkaldyia deyrollii* Vuill. (♀)タガメ(田鼈)(カツバムシ) P. 97(142)
10. *Ranatra chinensis* Mayr (♀)ミヅカマキリ(水斧蟲) P. 97(142)
11. *Notonecta bivittata* Mats. (♂)オキナハマツモ(ムシ) P. 97(142)
12. *Notonecta triguttata* Motsch. (♂)ナミマツモ(松藻蟲) P. 98(142)
13. *Aphelocheirus nawae* Mats. (♂)トゲナベブタムシ P. 98(143)
14. *Corixa substriata* Uhl. (♀)コフウセン P. 98(143)
15. *Anisops scutellaris* H. S. (♀)コマツモ P. 98(143)
16. *Corixa distanti* Kirk. (♀)ナミフウセン(風船蟲) P. 98(144)
17. *Ranatra sordidula* Dohrn (♀)ヒメミヅカマキリ P. 98(144)
18. *Sphaerodema rusticum* L. (♂)オキナハコヲヒムシ P. 99(144)
19. *Naucoris exclamationis* Scott (♂)コバンムシ P. 99(144)

