

Dr. S. MATSUMURA:
THOUSAND INSECTS OF JAPAN
ADDITAMENTA
I
1913

理學博士 松村松年 著

新日本千蟲圖解 卷之一

東京 警醒社書店

呈シ、中央ニテ廣ク相分離ス、腹面ハ基部ヲ除キ赤血色、雌ノ終節ノ後縁ハ銳角ヲナシテ深ク刻ラ
ル、體長(♂)(♀)六分五厘—八分、開張一寸七分—二寸、此ハ臺灣至ル處ニ普通ナリ、
分布—臺灣、南方支那、印度、

(136) あしあかはぐろぜみ

第十圖(11) (♀)

學名 *Scleroptera splendidula* F.

昆蟲學上ノ地位 蟬科

體ハ黑色、前胸背ノ前後縁及ビ中央ノ縦條、中胸背ノ縦條並ニ前翅前縁ノ中央ハ黃白、觸角ハ淡黃
褐、顔、前胸背ノ兩側、X字形ノ隆起但シ中央ニ一黒紋アリ體下、脚、鱗狀瓣及ビ腹部ハ黃赤、前
翅ハ黑色、光線ノ工合ニヨリ紫紺色ヲ現ハス、後翅ハ無色透明、前縁ハ少シク暗色ヲ帶ブ、脚基節
ノ大部ハ暗色、鱗狀瓣ハ短小ニシテ稍ヤ卵形ヲナス、前腿節ノ棘狀突起ハ少シク暗褐ヲ帶ブ、體長
(♂)(♀)六分—七分、開張一寸五分—一寸九分、此ハ臺灣ニ普通ナレドモ前種ニ比スレバ遙ニ小數ナリ、
分布—臺灣、南方支那、印度、

(137) たいわんたがめ

第十一圖(1) (♂)

學名 *Belostoma indicum* Lep. et Serv.

昆蟲學上ノ地位 田龍科 (*Belostomidae*)

此ハたがめ(144) 號(日本千蟲圖解第一卷、百七十九頁)ニ酷似スレドモ其異ナル所ハ左ノ如シ、

- 一、形遙ニ大ニシテ長キコト、
 - 二、前胸背長ク、中央ニ暗色ノ一縦條ヲ具ヘ、兩側ニ同色ノ二縦紋アリテ一ハ前縁ヨリ起リ、他ハ後縁ヨリ發シ、何レモ反對縁ニ達セズ、後縁ニ横皺ヲ缺ク、
 - 三、稜狀部ニモ暗色ノ二縦紋ヲ裝フ、
 - 四、翅端ニ於ケル膜質部ノ脈ハ總テ平行シ、横脈ヲ以テ相連續スルモノ稀ナリ、
 - 五、頭及ビ口吻ノ兩側紋、胸側ノ縦條、中胸片ノ六紋、前腿節ノ縦條、轉節ノ斑紋等ハ暗色、
 - 六、雄ノ最終ノ腹面節ハ遙ニ長ク、(144)號ノ如ク中央ニ肥大セル部分ヲ缺キ、末端ニ凹陷部ナシ、雌ノ尾狀突起ハ遙ニ短カシ、體長(♂)二寸四分—二寸五分、此ハ臺灣ニ稀ナラズ、
- 分布—臺灣、支那、印度、

(138)

まだらあしみづかまきり

第十一圖 (2) (♀)

學名 *Ranatra maculipes* Mats.

昆蟲學上ノ地位 紅娘華科

此ハ(148)號ひめみづかまきりに酷似スレドモ其差異ハ左ノ如シ、

- 一、體ハ小形ニシテ細シ、
- 二、前胸背ハ長クシテ細シ、
- 三、前肢ノ基節及ビ腿節ハ(148)號ニ比スレバ遙ニ長クシテ細シ、暗色ノ斑紋ハ散在ス、中後ノ腿節

及ビ脛節モ亦長クシテ細シ、中肢ノ腿節ニ暗色紋ヲ散在ス、

四、腹部ハ(148)號ニ比スレバ遙ニ短カシ、之レニ反シテ尾狀突起ハ遙ニ長シ、

五、雄ノ生殖板ハ廣ク、中央ノ縦隆ハ餘リ高カラズ、體長(♂)七分五厘—八分、此ハ臺灣ノ地沼ニ稀ナラズ、

分布—臺灣(打狗)、

Ranatra maculipes n. sp. (Pl. XI, Fig. 2, ♀).

Closely allied to *R. brachyura* Horv. (No. 148), but differs in the following points:

1. Body smaller and narrower.
 2. Pronotum longer and narrower, and impunctured.
 3. Coxae, femora, tibiae and tarsi much longer and narrower, anterior and middle femora spotted with gray.
 4. Abdomen much narrower, abdominal appendages much longer.
 5. Genital valve much broader and the middle keel much lower.
- Length—24—26 mm. (excl. abd. append.); abd. append. 19 mm.
 Hab.—Formosa (Takaoo), many specimens collected by the author.

(139) をきなはこをいむし 第十一圖(3)

學名 *Spherodema* (*Appasus*) *rusticum* L.

昆蟲學上ノ地位 田鼈科

此ハ(145)號こをいむしニ酷似スレドモ左ノ諸點ニヨリ區別スルコト容易ナリ、

一、體遙ニ小ニシテ、普通飴色ヲ呈ス、

二、頭短カク、其前端ハ明ニ廣シ、前胸背ノ後縁ハ廣ク、後縁ニ近キ横溝ハ餘リ判然セズ、點刻

ハ微小ナリ、稜狀部ノ中央ニアル縮刻ハ遙ニ微小ナリ、

三、半翅鞘ニハ網狀ノ脈ヲ缺キ、膜質部ニ於ケル縦脈ノ數ハ遙ニ少シ、

四、雄ノ生殖板ハ短カク、(145)號ノ如ク其末端ニテ銳尖ナラズ、

體長(♂)五分—五分五厘、此ハ臺灣ニ普通ナリ、

分布—沖繩、臺灣、支那、フヰリピン、印度、濠洲、

(140) こばんむし

學名 *Naucoris exclamatoris* Scott.

昆蟲學上ノ地位 小判蟲科

體ハ光澤アル黃色ニシテ少シク綠色ヲ帶ブ、小判形ヲ呈シ、腹部ノ中央少シク幅廣ク、尾端ハ三角
形ヲナシテ終ル、後縁ニ縁毛多シ、前頭ハ圓ク、複眼ハ腎臟形ヲナス、腹面ハ暗黃、兩側ニ暗色紋
ヲ列ヌ、此ハ播州地方ノ池沼ニ普通ナリ、體長四分五厘、
分布—本州、

(141) こげなへぶたむし

學名 *Aphelocheirus nawae* Mats.

第十一圖 (5) (♂)

第十一圖 (4) (♂)

昆蟲學上ノ地位 鍋蓋蟲科 (Apkeloetheripae)

體ハ黃色、後頭ノ一紋、前胸背ノ中央其中央ノ一紋ハ黃色、稜狀部ノ兩側紋、半翅鞘(中央紋ハ黃色)、腹背ノ中央(中央ノ二三紋ハ黃色及ビ兩側紋ハ暗色、前胸背及ビ腹側ニアル突起ハ鋭尖ナリ、脚ハ黃色、後脛節及ビ同第一跗節ノ中央ニアル刷狀毛ハ暗色、雄ニテハ腹背黑色ニシテ中央及ビ兩側ニ黃紋ヲ列ス、體長二分五厘—三分五厘、此ハ岐阜地方ニ稀ナラズ、分布—本州、九州(熊本)。

(142) おきなはまつもむし

學名 *Notonecta bivittata* Mats.

昆蟲學上ノ地位 松藻蟲科

體ハ淡黃褐、頭及ビ前胸背ニ斑紋ヲ缺ク、稜狀部ハ黑色、小顆粒ヲ散在ス、前翅ハ赤褐、黑紋ヲ散在シ、中央ニアルモノハ合シテ帶狀ヲナス、半翅鞘ノ末端及ビ膜質部(基部ヲ除キ)ハ黑色、後翅ハ透明ニ近ク、翅底ハ朱色、脚ハ黃色、腹面(兩側ハ黃色)ハ暗色、此ハ沖繩ニ稀ナラズ、體長(♂)五分—(♀)五分五厘、分布—沖繩、

(143) たいわんまつもむし

學名 *Enithares formosanus* Mats.

第十一圖 (7) (♀)

第十一圖 (6) (♂)

昆蟲學上ノ地位 松藻蟲科

體ハ灰白、後頭ニ黒紋ヲ有スルモノアリ、前胸背ノ後縁、稜狀部ノ基部(中央ニ暗色ノ縦線ヲ有スルモノアリ)、半翅鞘ノ基部及ビ同末端ハ暗色、體下及ビ脚ハ淡黄色、口吻ノ末端ハ黒色、腹面ハ暗色、中央及ビ兩側紋ハ黄色、黄褐ノ長毛ヲ裝フ、此ハ臺灣、恒春地方ノ池沼ニ普通ナリ、體長三分、(附言) 此ハ松藻蟲(Notonecta) 屬ニ酷似スレドモ前胸背短カク、其兩側ニ卵形ノ凹陥アルヲ以テ容

易ニ區別スルコトヲ得、
分布—臺灣(恒春、臺中)。

Enithares formosanus n. sp. (Pl. XI, Fig. 7, ♀).

Body pale yellowish gray, on the hind margin of the head with a small black spot. Pronotum on the hind margin, scutellum at the base and in the middle, hemelytra at the base and the apex of the corium piceous, membrane grayish white. Body beneath and legs pale yellowish, rostrum at the apex black, venter except the middle line and side spots (which are yellowish) fuscous, with long fulvous hairs.

Length—♀ ♂ 8.5—9 mm.

Hab.—Formosa (Koshun, Taichu).

Closely allied to *E. indica* F., but differs in the coloration of hemelytra and membrane.

(144) うみあめんぼ (一名うみぐも) 第十一圖 (8) (♀)

學名 *Halobates sericius* Esch.

昆蟲學上ノ地位 水黽科 (Gerridae)

體ハ灰色、白色ノ短毛ヲ密生シ、光線ノ工合ニヨリ銀色ヲ放ツ、後頭ノ二紋及ビ前胸背ノ兩側ハ淡黃褐、觸角及ビ脚ハ黑色、基節及ビ轉節ニ黃褐紋ヲ裝フ、腹面ハ黃色、尾節ハ暗色、中央ノ縱條ハ淡黃色、體長一分八厘、此ハ海上ニ普通ナル種類ニシテ殊ニ播州地方ニ多シ、分布—本州、九州、沖繩、支那、印度、

(145) かたびろあめんぼ

第十一圖(9) (1)

學名 *Kotovelia kawakamii* Mats.

昆蟲學上ノ地位 水黽科

體ハ黑色、暗褐毛多シ、觸角ノ基部、前胸背ノ前緣ニアル一帯及ビ其兩側、腹部ノ兩側及ビ體下ノ大部ハ黃色、脚ハ黑色、基節、轉節、前腿節基部ノ大半、後腿節ノ基部及ビ其下面ハ黃色、後腿節ハ甚ダシク肥大シ、其下面ニ小齒ヲ列ヌ、腹面ノ基部ハ暗色、此ハ臺灣紅頭嶋ニ於テ川上瀧彌氏ノ採集セル珍種ナリ、分布—臺灣(紅頭嶋)、

Kotovelia (n. g.)

Closely allied to *Velia* Latr., but differs from the latter as follows:

1. Pronotum short, nearly disk shaped, no depressed fovea on each side and not elevated at the anterior margin; mesonotum on the sides not covered by the pronotum.
2. The anterior tarsi very short, fusiform, near the middle with 2 short curved claws.

3. The middle tibiae much shorter than the femora; the middle tarsi subequal to the tibiae, the 3rd joint as long as the 1st and 2nd together, nearly from the base bifid, with very long claws.

4. The hind femora very large, longer than the tibiae, the tarsi very short, only $\frac{1}{4}$ of the tibiae, at the apices bifid, with 2 short claws.

Type: *Kotovelia kawakamii* n. sp.

Kotovelia kawakamii n. sp. (Pl. XI, Fig. 9 ♂).

Body black, with fuscous hairs. The basis of antennae, a band at the anterior margin of the pronotum, the propleurae, abdomen on the sides and the underside of the body yellowish. Legs black, coxae, trochanter, the basal half of the anterior femur, as well as the base and the underside of the posterior femur yellowish. Hind femora very large, with soft fulvous hairs and few fuscous bristles, beneath with about 8 teeth in 2 rows, of which the middle one is largest, venter on the basal half fuscous.

Length: — 4 mm.

Hab.—Fornosa (Kotosho Isle), 4 specimens collected by Mr. T. Kawakami.

(146) をがさはらあめんば

第十一圖 (10) (♀)

學名 *Neogertis boninensis* Mats.

昆蟲學上ノ地位 水黽科

體ハ天鷲絨様ノ暗褐色、後頭ノ弓状紋、前胸背ノ中央ニ近キ一紋、中胸背ノ後縁及ビ脚基節ハ黄褐、前胸背ノ後縁、喉頭、前胸片及ビ前腿節ノ基部ハ淡黄褐、體下ハ天鷲絨様ノ灰色ニシテ光澤アリ、前後兩翅ヲ缺ク、形普通ノ水黽ニ酷似スレドモ、前胸背短カキヲ以テ容易ニ區別スルコトヲ得ベシ、

體長二分、此ハ小笠原島ニ普通ナリ、
分布—小笠原島(父島)、

Neogerris (n. g.)

Closely allied to *Gerris* F., but differs as follows :

Body shorter and broader, spindle shaped, antennae much longer, somewhat shorter than the body, 4th and 5th joint subequal, 2nd somewhat shorter than 4th. Pronotum short, conical, only reaches the middle of the mesonotum, no humeral projection, mesonotum oval and somewhat shorter than the pronotum. No trace of hemelytra and hind wings. Abdomen much shorter than the thorax.

Type : *Neogerris boninensis* n. sp.

Neogerris boninensis n. sp. (Pl. XI, Fig. 10 ♀).

Body velvety fuscous brown. An incurved spot at the hind margin of the head, a spot near the middle of the pronotum, the hind part of the mesonotum and the coxae yellowish brown. Pronotum at the hind margin, the gula, the prosternum and the basal part of the anterior femur ochraceous. Body beneath velvety gray, legs fuscous brown.

Length—♂ 5-6,5 mm.

Hab. Ogasawarajima (Bonin Island), many specimens collected by the author.

(147) めみづむし

學名 *Pelagonus flavomarginatus* Scott.

昆蟲學上ノ地位 眼水蟲科 (*Pelagonidae*)

第十一圖 (II) (♀)

體ハ黒褐、頭後頭ヲ除キハ光澤アル黒色ニシテ點刻及ビ縮刻多シ、顔ノ前縁、觸角基部ノ二節、前胸背ノ兩側、同後縁並ニ半翅鞘ノ前縁ハ黄色、前胸背、稜狀部及ビ半翅鞘ニ點刻ヲ粗布ス、半翅鞘ニ判然セザル青白紋ヲ散在ス、膜質部ノ脈ハ少ナシト雖モ判然ス、脚ハ黄褐、其下面ハ淡色、體下ニハ灰白ノ短毛ヲ密生スルヲ以テ暗灰色ヲ呈ス、又光線ノ工合ニヨリ銀色ヲ現ハス、體長一分六厘——一分八厘、此ハ播州地方ノ池沼ニ稀ナラザル種類ナリ、此幼蟲ハ甚ダ能ク游泳ス、分布——本州、九州、

(148) みづむし

學名 *Corixa distanti* Kirk.

第十一圖 (12) (♀)

昆蟲學上ノ地位 水蟲科 (*Corixidae*)

體ハ黄色、前胸背及ビ前翅ハ暗褐ニシテ前者ニハ約十個ノ黄帶ヲ具ヘ、後者ニハ黄帶及ビ波狀ノ黄線ヲ裝フ、體下及ビ脚ハ黄色、腹面ノ基部及ビ前胸背ノ兩側ニ暗色部アリ、體長(♂)三分——三分五厘、此ハ札幌地方ニ普通ナリ、分布——北海道、本州(青森)。

(149) まるみづむし

學名 *Plea japonica* Horv.

第十一圖 (13) (♀)

昆蟲學上ノ地位 圓水蟲科 (*Pleidae*).

體ハ黃褐、稍ヤ卵形ニシテ甚ダシク穹起シ、厚ハ幅ヨリ廣シ、多數ノ點刻ヲ散在ス、顔ノ中央ニ暗色ノ一縱條アリテ、此兩側ノ上方ニ同色ノ一紋ヲ有スルモノアリ、口吻及ビ體下ハ暗褐、脚ハ黃色、跗節端ハ暗褐、體長八厘、此ハ播州地方ノ池沼ニ普通ナレドモ其微小ナル爲メ人ノ注意ヲ惹カズ、分布—本州、九州、

(150) ひめみづむし

第十一圖 (14) (♀)

學名 *Micronecta sedula* Horv.

昆蟲學上ノ地位 水蟲科

體ハ黃色、少シク褐色ヲ帶ブルモノアリ、頭頂ノ中央ニ判然セザル褐色ノ一縱線アリテ後頭ニアル暗色ノ一紋ト相連續ス、口吻ハ暗色、前胸背及ビ前翅ハ暗黃、後者ニ暗色ノ四縱條アリテ、前縁ニアルモノハ翅底ヨリ中央ニ達シ、他ノ三條ハ總テ翅底ニ達セス、體下及ビ脚ハ黃色、胸側紋及ビ腹面ノ基部ハ暗色、體長八厘—一分、此ハ九州ノ池沼ニ普通ナリ、分布—本州、九州、臺灣、

(151) つやまるかめむし

第十二圖 (1) (♀)

學名 *Brachyplatys cognata* Wlk.

昆蟲學上ノ地位 椿象科

體ハ光澤アル黑色、光線ノ工合ニヨリ紫藍色ヲ現ハス、稍ヤ半球狀ヲナシ、粗ニ點刻ヲ散在ス、體下ハ平タシ、複眼ハ赤褐、觸角及ビ脚ハ黃褐、前中兩胸背ノ兩側及ビ稜狀部ノ周縁(基部ヲ除キ)ハ黃

褐、體下ハ黑色、口吻ハ黃褐、腹面ノ兩側ハ黃色、體長一分七厘、此ハ臺灣ニ産スレドモ稀ナルガ如シ、

分布—臺灣(埔里社)、

(152) きぼしひめまるかめむし

第十二圖 (2) (♀)

學名 *Coptosoma japonicum* Mats.

昆蟲學上ノ地位 椿象科

此ハ(157)號ひめまるかめむし(日本千蟲圖解卷之一、百八十七頁)ニ酷似スレドモ其異ナル處ハ左ノ如シ、

一、觸角ハ全部黃色、顔ノ兩側ニ黃紋ヲ裝フ、

二、形遙ニ小ニシテ、稜狀部ノ中央(157)號ノ如ク膨起セズ、

三、前胸背ノ點刻ハ粗大ニシテ、前縁ニ近ク黃色ノ四紋ヲ具ヘ、之レハ四角形ニ排置セラレ、後

方ニアル二個ハ長クシテ弓狀ニ曲リ横置セラレ、又兩側ニ同色ノ一縦條アリテ少シク斜走ス、

四、稜狀部ノ周圍(基部ヲ除キ)ハ黃色、基部ニアル黃紋ハ長クシテ横置セラレ、其後方ノ一圓ニ微

小ノ點刻ヲ粗布ス、(157)號ニアリテハ稍ヤ滑澤ナリ、中後兩胸背ノ兩側及ビ腹側ハ黃色、腹側

紋ハ大ニシテ判然ス、脚ハ黃色、基節、轉節及ビ腿節(末端ヲ除キ)ハ黃褐、體長九厘、此ハ東

京地方ニ稀ナラズ、

分布—本州、九州、

Coptosoma japonicum n. sp. (Pl. XII, Fig. 2, ♀).

Black, shining. Head nearly impunctured, in the middle with a longitudinal yellowish spot, tylus at the apex yellow. Pronotum thickly punctured on the anterior part, with 4 oblong transverse spots (2 and 2), the pair nearest the anterior margin being smaller, the anterior angles of the pronotum narrowly, an oblique longitudinal stripe on each side, and a small spot at each posterior basal angle yellow. Scutellum near the base with 2 yellowish, transverse, elongate spots before the basal impression; the sides quite broadly yellow, thickly punctured. Body beneath black, abdomen on the sides yellow, venter on each side with a row of yellowish spots. Legs yellow, coxae, trochanter and femora (except the apices) yellowish brown.

Length—3 mm.

Hab.—Honshu, Kiushu; many specimens collected by the author.

Closely allied to *C. assamensis* Atk. but larger and the coloration in detail distinctly others.

(153) あかぎかめむし

第十二圖(3) (♀)

學名 *Cantao ocellatus* Thunb.

昆蟲學上ノ地位 椿象科

體ハ黃褐、後頭中央ノ縱條、頭ノ下面(前縁ヲ除キ)、觸角ノ基部、胸下、脛節、後腿節及ビ腹面ノ斑紋等ハ暗綠、觸角、前胸背ノ前縁、同八紋(二列)、稜狀部ノ五紋(五角形ニ排列ス)及ビ各氣門點ハ黑色、各腹面節ノ中央ニ二暗綠紋ヲ具ヘ、尾節ニハ大ナル一暗綠紋ヲ裝フ、前翅ハ長ク稜狀部ヲ越ユ、脚ハ黃褐、體長八分内外、此ハ沖繩及ビ臺灣ニ稀ナラズ、あかぎノ害虫ナリ、分布—沖繩、臺灣、支那、印度、

(154) ぎらんさんかめむし

第十二圖 (4) (♀)

學名 *Lamprocoris giranensis* Mats.

昆蟲學上ノ地位 椿象科

頭及ビ胸部ハ金綠色、觸角ハ黑色、前胸背ノ前角ハ紫色、前縁ノ中央、兩側ノ一紋及ビ後縁ノ五縱條中央ニアルモノハ四角形ニシテ長ク、其前縁ハ黃褐色ニヨリテ堺セラルハ黑色、稜狀部ハ黃褐、基部、中央ノ一帯(兩側ハ金綠色)及ビ後縁ニ近キ三大紋ハ黑色、體下及ビ脚ハ黃褐、胸側及ビ腹側紋ハ金綠色、腹背及ビ腹側ハ赤紫色、腹面ノ基部及ビ各節(第一節及ビ尾節ヲ除キ)ノ兩側ニアル一紋並ニ尾節ノ一大紋ハ黑色、脚ハ黃褐、腿節ノ末端ハ金綠色、脛節及ビ跗節ハ暗褐、體長三分五厘、此ハ臺灣宜蘭ニテ鶴仲壽美氏ノ採集セル珍種ナリ、分布—臺灣、

Lamprocoris giranensis n. sp. (Pl. XII, Fig. 4, ♀).

Head and thorax metallic green. Antennae, the middle part of the anterior margin of pronotum, a spot near each anterior angle, 5 longitudinal oblong spots on the hind margin (of which the middle spot long, rectangular, anteriorly and sidely bounded by an ochraceous line) black. The anterior angles of the pronotum purple, scutellum ochraceous, a basal and middle band, as well as 3 large spots near the posterior margin black. Hemelytra fuscous, on the costa dark purple, at the base hyaline. Body beneath and legs ochraceous, on the side and dorsum reddish purple, stigmatal spots and the sides of the thorax metallic green, the base of the venter and a side spot of each ventral segment (except the first and last segment), as well as a large oblong transverse spot on the last segment black. Femora at the apices metallic green, the tibiae and

tarsi fuscous.

Length—♀ 10 mm.

Hab.—Formosa (Girani), one ♀ specimen collected by Mr. N. Tsuru.

(155) みやこきんかめむし

學名 *Lampyris miyakoensis* Mats.

昆蟲學上ノ地位 椿象科

體ハ紫綠色、觸角ハ黑色、基部ハ黃褐、前胸背及ビ稜狀部ノ基部ハ紫藍色、稜狀部ノ中央ニ二黑紋アレドモ餘ッ判然セズ、體下ハ金綠色、腹面ノ兩側及ビ脚ハ黃褐、前胸ノ側片及ビ氣門點ハ紫藍色、脛節ハ金綠色、前中兩脛節ノ基部ハ少シク藍色ヲ帶ブ、跗節ハ黑色、體長四分内外、此ハ沖繩宮古島及ビ石垣島ニ産スレドモ稀ナリ、分布—沖繩、

第十二圖 (5) (♀)

(156) わたなべきんかめむし

學名 *Poecilocoris watanabei* Mats.

昆蟲學上ノ地位 椿象科

體ハ黃褐、頭及ビ觸角ハ黒紫色、但シ觸角末端ノ二節ハ黃褐、前胸背ノ前縁及ビ兩側ハ紫色ヲ帶ビ、中央ニ二個ノ大ナル紫褐紋ヲ裝フ、稜狀部ニ二双ノレ字形紋アリテ紫褐色ヲ呈シ、基部ニ近キモノ

第十二圖 (6) (♀)

ハ中央ニテ一線ニヨリ相連續ス、尾端ニ近キモノハ大ニシテ其前縁ニ凹凸アリ、前翅前縁ノ中央ハ暗色、體下、口吻及ビ脚ハ黃褐、少シク紫色ヲ帶ブ、胸面ノ兩側紋ハ黒藍色、腿節ノ末端、脛節及ビ跗節ハ暗綠、前尾節ノ一大紋及ビ氣門點ハ黒紫色、體長五分五厘、此ハ臺灣北埔ニテ捕獲セルモノナルガ稀ナルガ如シ、
分布—臺灣、

Pocilocoris watanabei n. sp. (Pl. XII, Fig. 6, ♀).

Body ochraceous. Head and antennae dark purple, the last 2 joints of the antennae being ferrugineous. Pronotum on the anterior and side margin with a purple shade, in the middle with 2 large dark purple spots. Scutellum with 2 pairs of V-shaped dark purple spots, of which the basal pair smaller and connected at the base by a same colored transverse band, another pair larger, undulated at the anterior border. Body beneath ochraceous, sternum on the sides, stigmatal spots and a large spot of the penultimate segment dark purple. Rostrum and legs ferrugineous, femora at the apices, tibiae and tarsi dark green.

Length—♀ 17 mm.

Hab.—Formosa (Hoppon), one ♀ specimen collected by the former K. Watanabe.

Closely allied to *P. hardwicki* West. from China, but the spots of the scutellum distinctly others.

(157) あかすぢきんかめむし

學名 *Pocilocoris lewisi* Dist.

昆蟲學上ノ地位 椿象科

第十二圖 (7) (♀)

體ハ金綠色、頭頂ノ二縱條、複眼ノ内側及ビ觸角ハ黑色、後者ハ少シク紫藍色ヲ帶ブ、前胸背ノ前縁ニ近キ弓狀帶、其兩側ニ當リ之レヲ後縁ニ連續スル一斜條、中央ノ一縱條、稜狀部ノ基部ニアルレ字形ノ二紋、中央ノ一帯此ハ中央ニテ山形ヲナス及ビ尾端ニ近キ一帯(此ハ中央ニテ太シ)ハ黃褐ニシテ少シク紫色ヲ帶ブ、尙稜狀部ノ中央ニ同色ノ一縱條アレドモ餘リ判然セズ、體下ハ黃褐、胸側片、氣門點及ビ脚ハ金綠色、但シ脚ノ基節及ビ轉節ハ黃色、體長六分内外、此ハ日光地方ニ産スレドモ稀ナリ、

分布—本州、臺灣、

(158) あをばしきんかめむし

第十二圖 (8) (♀)

學名 *Pocciocoris 15-guttatus Mats.*

昆蟲學上ノ地位 椿象科

體ハ黃褐、頭及ビ觸角ノ基節ハ黒藍色、觸角ノ第二及ビ第三節ハ金綠色、第四及ビ第五節ハ黑色、前胸背ノ前縁及ビ兩側ハ紫色ヲ帶ブ、中央ニハ金綠色(紫色ナルモノアリ)ノ二縱條アレドモ短カクシテ前後ノ兩縁ニ達セズ、稜狀部ニ十三個ノ金綠紋紫色ナルモノアリ(アリテ5.2.4.2ノ四行ニ排置セラル、腹背ノ兩側ハ金綠色、頭下及ビ胸面ハ金綠色、口吻、腹面及ビ脚ハ黃褐、腿節、脛節及ビ跗節ハ紫色ヲ帶ブ、體長六分、此ハ臺灣地方ニ産スレドモ稀ナリ、
分布—臺灣(屈尺、埔里社)、

Poecilocoris 15—guttatus n. sp. (Pl. XII, Fig. 8, ♀).

Body fulvous brown, closely punctured. Head above and the basal joint of the antenna dark indigo blue, the 2nd and 3rd joint metallic green, the 4th and 5th black. Pronotum on the anterior and side margins reflecting purple; 2 short longitudinal stripes in the middle of pronotum and 13 spots (5, 2, 4 and 2) in 4 rows in the scutellum, as well as the dorsum on the sides pale metallic green or purple. Head and thorax beneath metallic green, rostrum, ventre and legs yellowish brown, with strong purple reflection, tibiae and tarsi metallic blue or green.

Length—♀ 1.8 mm.

Hab.—Formosa (Taihok, Horisha), collected by Mr. M. Suzuki and the author.

(159) たんわんきんかめむし

第十二圖 (9) (♀)

學名 *Chrysophara formosana* Mats.

昆蟲學上ノ地位 椿象科

體ハ綠色、鑢性ノ光澤ヲ帶ビ、斑紋ハ黑綠、點刻アレドモ少ナシ、後頭ハ黑藍色、觸角ハ黑色、基部ノ二節ハ金綠色、前胸背ノ前縁ニ近キ兩側ニ各一個ノ橢圓紋アリテ横置セラレ、後縁ニ七條ノ縦紋アリテ、中央ニアルモノ最モ長シ、稜狀部ニ十五個ノ斑紋アリテ3・2・4・3・2・1ノ六列ニ排置セラレ、第二列ニアル二個ハ弓狀ヲナシ横置セラレ、第二列ニアル中央ノ二個ハ大ニシテ稍ヤ半月形ヲナス、頭下及ビ胸面ハ綠色、脚及ビ腹面ハ金綠色、後者ノ兩側ハ紫色、跗節ハ黑色、體長三分五厘、此ハ臺灣阿里山ニテ捕獲セル珍種ナリ、分布—臺灣(阿里山)、

Chrysophara formosana n. sp. (Pl. XII, Fig. 9, ♀).

Body green, with metallic lustre, markings dark green, sparsely punctured. Occiput dark indigo blue. Antennae black, basal the metallic green. Pronotum near the anterior angles each with an oblong transverse spot, on the posterior half with 7 longitudinal short stripes, of which the middle one is longest. Scutellum with 15 spots in 6 rows (3, 2, 4, 3, 2) the 2nd spots somewhat bow shaped, 2 middle spots of the 3rd row large and being halfmoon shaped. Head and thorax beneath metallic green, legs and venter golden green, the latter on the sides purple, the tarsi black.

Length—11 mm.

Hab.—Formosa (Arisan), collected by the author.

(160) りりぼしきんかめむし

第十二圖 (10) (♀)

學名 *Chrysophara stollii* Wolf.

昆蟲學上ノ地位 椿象科

體ハ金綠色、斑紋ハ黒藍色、觸色ハ黒色、基節ノ半基部ハ黃白、頭頂ノ兩側ニ一紋ヲ具ヘ、中央ニ長キ一縦條アリ、前胸背ノ前縁ニ近ク三紋ヲ具ヘ、後縁ニハ五個ノ楕圓紋アリテ、中央ニアルモノ最モ太シ、稜狀部ニ七紋アリテ兩側ニ各三個、中央ニ一個アリテ此ハ長ク大ナリ、尙ホ尾端及ビ前翅ノ前縁ハ黒藍色、體下ハ暗黃、胸側紋及ビ氣門點ハ金綠色、胸片ハ黒色、胸面及ビ腹面ノ兩側ハ赤紫色、脚ハ黃色、前中兩腿節ノ一縦條、後腿節ノ末端並ニ全脛節ハ金綠色、跗節ハ黒色、腹面ノ基部及ビ尾節ニ暗褐色ノ部分アリ、體長五分内外、此ハ臺灣恒春地方ニ稀ナラズ、分布—臺灣(恒春)、支那、印度、

(161) ななほしきんかめむし

第十二圖 (11) (♀)

學名 *Chrysophara excellens* Burm.

昆蟲學上ノ地位 椿象科

體ハ金綠色、觸角ハ黑色、前胸背ノ中央ニ四黒紋アリテ一列ヲナシテ横置セラル、稜狀部ニ黑色ノ六紋アリテ2・2・2ノ三列ニ横置セラル、前翅ノ前縁ハ黒藍色、體ハ金綠色、光線ノ工合ニテ紫藍色ヲ現ハス、各腹面節ニハ三黒紋アリテ横置セラレ、氣門點モ亦黑色ナリ、脚ハ赤褐、腿節ノ末端及ビ脛節ハ黒藍色、跗節ハ黑色、體長六分―六分五厘、此ハ沖繩地方ニ稀ナラズ、分布―沖繩、臺灣、支那、印度、

(162) ほしむらさきかめむし

第十二圖 (12) (♀)

學名 *Coleotichus (Epicoleotichus) borealis* Dist.

昆蟲學上ノ地位 椿象科

體ハ黃褐、少シク紫色ヲ帶ブ、頭ハ三角形ヲナシテ突出シ、黑色ノ點刻ヲ散在シ、兩側ニ各一黒線アレドモ之レハ頭端ニ達セズ、其外側ハ黄色、觸角、前胸背ノ兩側、稜狀部ノ基部ニアル二點、體下及ビ脚ハ黄色、前胸背及ビ稜狀部ノ點刻ハ紫色、後者ノ中央線ハ黄色ニシテ之レニ黑色ノ點紋ヲ列テ、其兩側ニモ黒紋ヲ有ス、光線ノ工合ニヨリ判然セザル暗色ノ波狀帶數多アリテ相平行ス、前翅ハ黄色、前縁ニ一黒縦條ヲ裝フ、體下及ビ脚ニ斑紋ヲ缺ク、體長五分―六色五厘、此ハ臺灣新社

地方ニ捕獲セルモノナルガ稀ナルガ如シ、
分布—臺灣、

(163) うしかめむし

學名 *Alcimus borealis* Dist.

昆蟲學上ノ地位 椿象科

體ハ淡黃褐、暗色ノ點刻ヲ密布セルヲ以テ暗色ナルガ如シ、觸角ハ暗色、基節ハ黃色、頭項ノ一紋、
複眼前ノ一紋、中央ノ二縱條、前胸背ノ前緣、兩側、中央ノ二紋及ビ一縱線並ニ稜狀部ノ基部ニア
ルニ紋ハ淡黃褐、前胸背ノ兩側ニアル角狀突起ハ大ニシテ、末端ニテ斜ニ截斷セラレタルノ觀ヲ呈
シ後方ニ向テ突出ス、半翅鞘ハ稜狀部ヨリ少シク短カシ、脚ハ黃褐、腿節ハ其末端ヲ除キ暗色、體
下ハ淡黃褐、腹面ノ中央ニ暗色ノ縱條ヲ具ヘ、各節ノ兩側ニ同色ノ一橫紋ヲ裝フ、體長二分五厘、
角狀突起ノ距離ハ二分八厘、此ハ京都地方ニ稀ナラズ、
分布—本州(京都、奈良)、沖繩、

第十二圖 (13) (♀)

(164) ふたこぶかめむし

學名 *Cazira ulcerata* H. S.

昆蟲學上ノ地位 椿象科

體ハ栗色、觸角ハ黃褐、第三節ノ末端、第四節及ビ第五節基部ヲ除キノ大部ハ暗色、頭項ニ二縱隆

第十二圖 (14) (♀)

ヲ具へ、前胸背ニハ瘤狀及ビ不正ノ網狀隆起多シ、稜狀部ノ基部ニハ大形ノ二瘤狀突起アリ、更ニ其兩側ニ各一個ノ小瘤隆ヲ裝フ、殘部ノ稜狀部ハ黃褐ニシテ其兩側ハ隆起シ、末端ニ稍ヤ半圓形ノ凹陥アリ、前翅ノ前縁ニ網狀ノ隆起ヲ具へ、半翅鞘ニ黃褐紋ヲ散在ス、膜質部ハ大ニシテ、遙尾端ヨリ突出シ、黃褐ナリ、脚ハ體ト同色、腿節ニ一銳齒ヲ具へ、前脛節ハ葉狀ニ膨大シ、中央ニ近ク一縦隆ヲ裝ヒ、光線ノ工合ニヨリ少シク紫色ヲ帶ブ、腿節及ビ脛節ニ黃紋ヲ具へ、脛節ノ末端ハ暗色、體下ニ黃紋ヲ散在ス、體長二分七厘、此ハ臺灣地方ニ産スレドモ餘リ多カラズ、分布—臺灣、

(165) ひめくろかめむし

學名 *Podops (Scotinophara) tarsalis* Voll.

第十二圖 (15) (♀)

昆蟲學上ノ地位 椿象科

體ハ黑色、觸角各節ノ末端(第五節)ハ紡錘形ヲ呈シテ太ク、末端ハ廣ク赤褐及ビ跗節ハ黃褐、前胸背ノ前縁角及ビ後縁角ニ近ク各一個ノ角狀突起アリ、稜狀部ハ長クシテ尾端ヲ蔽ヒ、點刻多シト雖モ、中央ニハ少ナク、横皺多シ、半翅鞘ノ前縁ハ少シク赤褐、口吻ハ黃褐、體下及ビ脚ハ黑色、腿節ノ末端ハ少シク黃褐、體長一分八厘、此ハ京都地方ニ産スレドモ其數少ナキガ如シ、分布—本州、九州、臺灣、支那、印度、

(166) れうすしらほしかめむし

學名 *Eysarcoris lewisi* Dist.

昆蟲學上ノ地位 椿象科

體ハ灰黃、點刻暗色ナルヲ以テ暗灰色ナルガ如シ、頭ハ稍ヤ四角形ヲ呈シ、紫黑色ニシテ光澤ヲ帶ビ、粗大ノ點刻多シ、觸角ハ黃色、黑點ヲ散在シ、第四基部ヲ除キ及ビ第五節ハ黑色、前胸背ノ兩側ニ棘狀ノ一銳齒ヲ具ヘ、其前方ノ兩側ハ黃色、前縁ニ近ク紫黑色ノ二紋アリ、稜狀部ノ基部ニ各一個ノ黃白紋アリテ、之レニハ點刻ヲ缺ク、半翅鞘ニ斑紋ヲ缺キ、膜質部ハ暗黃、體下ハ紫黑色、銅色ノ光澤アリ、胸面及ビ脚ハ黃色、前者ニハ黑點刻、後者ニハ黑點ヲ散在ス、體長二分四厘、此ハ九州地方ニ稀ナラズ、分布—本州、九州、

第十二圖 (16) (♀)

(167) くらづまるかめむし

學名 *Eysarcoris melanocephalus* F.

昆蟲學上ノ地位 椿象科

體ハ黃白、暗色ノ點刻ヲ散在ス、觸角ノ第四(基部ヲ除キ)及ビ第五節ハ黑色、頭、前胸背ノ前縁ニアル二紋、稜狀部ノ基部ニアル三角形ノ大紋及ビ同末端ハ紫黑色ニシテ銅色ノ光澤アリ、稜狀部ノ基部ニ黃白ノ一小紋アリ、半翅鞘ニアル點刻ハ小ニシテ粗ナリ、膜質部ハ灰白、半透明、體下ハ紫黑

第十二圖 (17) (♀)

色、腹側ハ黃白ニシテ黑紋ヲ列ヌ、口吻及ビ脚ハ黃白、後者ニハ黑點ヲ散在シ、腿節ニハ黑紋ヲ裝フ、體長二分内外、此ハ札幌地方ニ稀ナラズ、
分布—北海道、本州、

(168)

いはさきかめむし

第十二圖 (18)

(♀)

學名 *Starioides iwasakii* Mats.

昆蟲學上ノ地位 椿象科

體ハ淡黃褐、暗褐ノ點刻多シ、觸角口吻及ビ脚ハ黃褐、稜狀部ノ末端ハ黃白ニシテ點刻ヲ缺キ、基部ニハ點刻少ナキヲ以テ黃褐ノ大斑紋ヲ有スルガ如シ、半翅鞘ニモ點刻ノ少ナキ二部分アリテ、恰モ二斑紋ヲ有スルガ如シ、膜質部ハ灰白、半透明、遙尾端ヨリ突出ス、口吻ノ末端ハ黑色、體下ハ淡黃褐、胸面ノ點刻ハ多シト雖モ、腹面ニ於ケルモノハ少ナシ、腹側ニハ黑紋ヲ列ヌ、體長三分、此ハ岩崎卓彌氏ノ沖繩石垣島ニテ採集セルモノナリ、
分布—沖繩、

Starioides (n. g.)

Closely allied to the genus *Staria* Dornh, but differs from the latter in the following characters:

1. Above the anterior coxae each side wanting a leaf like appendix.
2. Ocelli large, placed near the eyes, but not very closely.
3. Antennae long, reaching the middle of the body, basal joint short, but nearly reaching the apex of the head, 2nd

somewhat longer than the 1st, but much shorter than the 3rd ; 3rd, 4th and 5th subequal.

4. Second joint of the rostrum scarcely longer than the 3rd ; 4th much shorter than the 3rd.

5. Lateral angles of pronotum more produced and angular ; scutellum reaching over the middle of the abdomen, at the apex much narrower and much shorter than the corium ; membrane long, with somewhat 11 longitudinal veins.

6. Legs longer and slender.

Type—*Starioides iwasakii* n. sp.

Starioides iwasakii n. sp. (Pl. XII, Fig. 18, ♀).

Body pale yellowish brown, with numerous fuscous punctures. Antennae, rostrum and legs yellowish brown.

Scutellum at the apex pale yellow, glabrous, at the base with a semicircular sparsely punctured part, so that it seems like a large spot, corium in the middle and at the apex each with a pale spot (like that of the scutellum). Membrane subhyaline, suffused with gray. Body beneath pale yellowish brown, with fuscous punctures, abdomen only sparsely punctured on the sides, rostrum at the apex fuscous.

Length—♀ 9 mm.

Hab.—Riukiu (Yayeyama), collected by Mr. T. Iwasaki.

(169) あやなみかめむし

第十二圖 (19) (♀)

學名 *Agonoscelis nubila* F.

昆蟲學上ノ地位 椿象科

體ハ淡黃褐、觸角、頭頂ノ四縱條兩側ノ二條ハ短カシ、前胸ノ點刻及ビ後縁、稜狀部ノ點刻、其末端ニ近キ兩側ノ各一紋、半翅鞘ニ於ケル約九個ノ横紋(綾狀ニ相連ナルモノ多シ)並ニ膜質部ノ脈ハ黒

色、前胸背及ビ稜狀部中央ノ一縦條ハ黃色、膜質部ハ長ク遙尾端ヲ越ニ、口吻、體下及ビ脚ハ淡黃褐、腿節末端ノ二紋、脛節基部ノ二紋、前脛節ノ下面及ビ跗節ハ黑色、口吻ハ長クシテ腹基部ニ達シ、末端ハ黑色、體長三分五厘—四分(翅端迄)、此ハ廣ク東洋ニ傳播セル椿象ニシテ播州地方ニ普通ナリ、

分布—本州、九州、沖繩、臺灣、支那、印度、

(170) しろへりがいた

學名 *Sehirus niveimarginatus* Scott.

昆蟲學上ノ地位 椿象科

體ハ黒藍色、粗大ノ點刻多シ、觸角、頭、口吻、體下及ビ脚ハ黑色、前胸背ノ兩側及ビ半翅鞘ノ前縁ハ細ク黃白、前胸背ノ中央ニ廣キ横凹陥アリ、稜狀部ハ腹部ノ半以上ニ達ス、各口吻節ノ基部ハ灰白、各跗節ノ基部ハ黃褐、體長(♂)二分—二分五厘、此ハ本州ニ稀ナラズ、分布—本州、九州、沖繩、

(171) よこづながいた

學名 *Adrisa magna* Uhl.

昆蟲學上ノ地位 椿象科

體ハ光澤アル黑色、粗大ノ點刻多シ、頭ハ前縁ニテ圓ク、兩側ニ粗大ノ點刻多シ、觸角ハ四節ヨリ成リ、第三及ビ第四節ノ基部ハ甚ダ細クシテ有柄ナリ、第三及ビ第四節ハ黃褐、口吻ハ暗褐ニシテ

第十二圖 (20) (♀)

第十二圖 (21) (♂)

第二節太シ、前胸背ノ中央隆起シ、其部分ニ點刻ヲ缺キ、兩側及ビ後緣ニ近キ點刻ハ粗大ナリ、稜狀部ノ末端ハ尖リ、之レニ點刻ナシ、半翅鞘ニアル點刻ハ小ニシテ、二縱脈ハ判然セリ、膜質部ハ黃褐、縱脈ハ判然セリ、體下及ビ脚ハ黑色、跗節ハ黃褐、體長六分五厘—七分、此ハ本州ニ産スレドモ稀ナリ、

分布—本州(東京、臺灣(埔里社)、支那、

(172) いねかめむし

學名 *Aenaria lewisi* Scott.

昆蟲學上ノ地位 椿象科

第十二圖 (22) (♂)

體ハ暗黃、褐色ノ點刻ヲ密布ス、觸角赤色、第五節ハ黃色、第一節ノ基部、第四節ノ末端及ビ第五節ノ中央ハ黑色、前胸背ノ前緣ニ近ク黑褐ノ二點紋ヲ具ヘ、稜狀部ノ中央ニ黃色ノ一縱條ヲ裝フ、半翅鞘ノ前緣ハ黃白ニシテ其内側ニ黑褐ノ一縱線ヲ並走ス、膜質部ハ灰白、半透明、脈ハ褐色、體下及ビ脚ハ淡黃色、氣門ハ黑色、黑色ノ點刻ヲ粗布ス、跗節端赤黃、體長(♂)四分内外、此ハ稻ノ害蟲ナリ、
分布—本州、四國、九州、沖繩、臺灣、

(173) きまだらかめむし

學名 *Erthesina fullo* Thunb.

第十二圖 (23) (♀)

昆蟲學上ノ地位 椿象科

體ハ黒褐、黄色ノ小紋ヲ散在ス、頭ハ長ク、其中央及ビ兩側ノ縱條、頭下ノ二縱條、複眼ノ後方、前胸背ノ前縁及ビ兩側、腹側ノ紋列及ビ體下ノ大部ハ黄色、膜質部ハ黒色、脚ハ黒色、基節、轉節及ビ腿節基部ハ黄色、前脛節ハ葉狀ニ肥大シ、基部ニ近ク一黄紋ヲ裝フ、中後兩脛節ノ中央及ビ跗節(末端ヲ除キ)ハ黄色、胸片ハ黒色、胸側ニ黒紋ヲ散在シ、各腹節ノ後縁、前尾節ノ中央線及ビ氣門線ハ黒色、體長(♂)七分内外、此ハ九州地方ニ稀ナラズ、分布—本州、九州、沖繩、臺灣、支那、フヰリピン、印度、歐洲(地中海沿岸)、

(174) たいわんおほかめむし

學名 *Eurostus validus* Dall.

第十二圖 (24) (♀)

昆蟲學上ノ地位 椿象科

體ハ栗色、小點刻ヲ散布ス、頭頂ノ二紋、前胸背ノ前縁及ビ稜狀部基部ノ兩側ハ暗綠色ニシテ光澤ヲ帶ブ、觸角ハ暗褐、體ノ半以上ニ達シ、末端節ハ黄色、其基部ハ暗褐、前胸背ニ淺キ横溝多シ、稜狀部ノ末端ニ杓子様ノ附屬物アリテ凹陷ス、半翅鞘ハ其末端ニテ尖リ、微小點刻ヲ密布ス、二縱脈ハ判然ス、膜質部ハ褐色ニシテ銅色ノ光澤ヲ有ス、基部ニ胞室アリテ之レヨリ多數ノ平行脈ヲ放散ス、腹側ハ黒色、各節ノ基部ハ黄褐、體下及ビ脚ハ黄褐、胸下ニ暗緑紋ヲ散在シ、腹面ノ兩側ハ暗緑、中央ニ暗緑ノ三縱線アリ、後腿節ノ基部ニ近ク長キ銳齒ヲ具ヘ、各腿節ノ末端ニ二銳齒ヲ裝

フ、體長一寸内外、此ハ臺灣新社地方ニ稀ナラズ、
分布—臺灣、支那、

(175) つまきくろかめむし

學名 *Aspongopus chinensis* Dall.

昆蟲學上ノ地位 椿象科

此ハ黒褐、點刻ヲ密布ス、觸角ノ末端節ハ橙黄色ニシテ其基部ハ少シク黑色、前胸背ニ淺キ横溝ヲ
並列ス、稜狀部ハ腹部ノ中央ニ達シ、兩側ニ淺キ横溝アリ、半翅鞘ハ少シク紫色ヲ帶ビ、膜質部ハ
淡色、基部ニ三胸室アリテ之レヨリ約十脈ヲ放散ス、體下及ビ脚ハ黑色、後脛節ノ中央ハ肥大ス、
體長七分内外、此ハ臺灣埔里社地方ニ産スレドモ其數多カラズ、
分布—臺灣、支那、

第十二圖 (25) (♀)

(176) はねあかあをかめむし

學名 *Plautia stali* Scott.

昆蟲學上ノ地位 椿象科

體ハ綠色、頭ニハ點刻多ク、前胸背及ビ稜狀部ニハ少ナシ、觸角ハ黄色、第一、第三、第四節ノ末
端及ビ五節ノ末端ニ近キ大紋ハ黑色、前胸背ノ兩縁ニアル一縦條ハ黑色、後縁及ビ兩側角ハ少シク
褐色ヲ帶ブ、稜狀部ハ腹部ノ半ヲ越ユ、半翅鞘ハ赤褐、前縁ハ綠色、膜質部ハ半透明、黄色ヲ帶ビ、

第十二圖 (26) (♀)

其基部ハ少シク濃色、體下及ビ脚ハ綠色、腹側ニアル五點紋ハ黑色、脛節ノ末端及ビ跗節ハ黃色、口吻ハ黃色、末端ハ黑色、體長三分五厘内外、此ハ本州ニ稀ナラズ、分布—本州、九州、

(177) あかかめむし

學名 *Menida histrio* F.

昆蟲學上ノ地位 椿象科

第十二圖 (27) (♀)

體ハ赤色、點刻ハ黑色、頭ハ黑色、黃色若クハ赤色ノ三縱隆ヲ具ヘ、其中間及ビ複眼ノ前方ニ當リテ同色ノ各一縱條アレドモ之レハ短カシ、觸角ハ淡黃褐、各節ノ基部ハ黑色、前胸背前線ノ凹陷部及ビ後縁ノ二紋ハ黑色、稜狀部ノ中央紋及ビ其末端ニ近キ二紋ハ黑色、半翅鞘ハ暗黃、前縁及ビ末端ニ近キ一紋ハ赤色、末端及ビ楔狀片ハ黑色、膜質部ハ暗黃色ニシテ半透明、體下及ビ脚ハ黃赤、兩側ノ大部ハ黑色ニシテ少シク綠色ヲ帶ブ、爪ノ末端ハ暗褐、體長二分五厘、此ハ臺灣ニ普通ナル種類ニシテ稻ノ葉液ヲ吸收シ大害ヲ加フ、分布—臺灣、支那、印度、

(178) しらほしむらさきかめむし

學名 *Menida violacea* Motsch.

昆蟲學上ノ地位 椿象科

第十三圖 (1) (♀)

體ハ紫黑色、粗大ノ點刻多シ、觸角ハ黑色、頭及ビ前胸背ノ前緣、前胸背ノ兩側、稜狀部ノ末端、腹背ノ兩側紋、脚並ニ體下ハ黃色、前胸背ノ後緣ハ廣ク淡黃色、膜質部ハ透明、腹部ヨリ少シク長シ、脚ニハ小黑紋ヲ密布シ、跗節ハ黑色、體下ニハ同色ノ點刻多シ、第二腹節ヨリ上方ニ向テ發セル棘刺ハ黃色ニシテ太ク、中胸片ニ達ス、體長三分二厘、此ハ本州ニ産スレドモ餘リ多カラズ、分布—本州、九州、西比利亞、

(179) へにくちぶとかめむし

學名 *Parastrachia fulgens* Dist.

昆蟲學上ノ地位 椿象科

第十三圖 (2) (♀)

體ハ朱色、觸角、前胸背ノ前緣、中央ノ楕圓紋、稜狀部(末端ヲ除キ)、半翅鞘中央ノ一紋、腹背、脚及ビ體下ノ兩側ニ並列セル紋等ハ黑色、轉節ハ少シク赤色ヲ呈シ、膜質部ハ半透明、少シク黃褐ヲ帶ブ、此ハ長椿象ニ酷似スレドモ太キ暗褐ノ口吻ヲ有スルヲ以テ容易ニ區別スルコトヲ得ベシ、體長五分五厘—六分、此ハ熊本地方ニ稀ナラズ、分布—本州、九州(熊本)、

(180) りりくちぶとかめむし

學名 *Zicrona coerulea* L.

昆蟲學上ノ地位 椿象科

第十三圖 (3) (♀)

體ハ光澤アル青藍色、點刻ヲ粗布ス、觸角ハ黑色、基部ノ二節ハ黒緑、半翅鞘ノ點刻ハ小ニシテ粗ナリ、膜質部ハ黒褐、七個ノ縦脈ハ判然ス、脚及ビ體下モ青藍色、口吻ハ黑色、短カクシテ太シ、他蟲ヲ捕食シ有益ナリ、體長♂(♀)二分五厘—三分、此ハ本州及ビ九州ニ稀ナラズ、分布—北海道、本州、九州、沖繩、支那、西比利亞、印度、歐洲、亞米利加、

(181) いしだくちぶごかめむし

學名 *Audinetia spinidens* Fr.

昆蟲學上ノ地位 椿象科

第十三圖 (4) (♀)

體ハ黃褐、粗大ノ點刻多ク、半翅鞘ニ於ケル點刻ハ小ナリ、頭頂ニハ黑色ノ二縱條ヲ具ヘ、内片(Tylns)ノ兩側モ亦黑色ナリ、觸角黄色、第三(基部ヲ除キ)、第四及ビ第五節(基部ヲ除キ)ノ三節ハ暗褐、前胸背ノ突起ハ黑色、其後縁ニ黑色ノ一齒アリ、稜狀部ノ末端及ビ前縁ハ黄色、膜質部ハ黃褐、光線ノ工合ニヨリ銅色ヲ現ハス、腹背ハ暗綠色、其後方ノ兩側、口吻、脚及ビ體下ハ灰黄色、但シ跗節ハ暗褐、腹面ノ中央ニ斷續セル暗色ノ一縱條ヲ裝フ、體長四分五厘、此ハ石垣島及ビ臺灣ニ産スレドモ稀ナリ、

分布—沖繩(石垣島)、臺灣(臺南)、支那、印度、

(182) きしもふりはりかめむし

學名 *Canthecona furcellata* Wolf.

第十三圖 (5) (♀)

昆蟲學上ノ地位 椿象科

體ハ淡黃褐、暗褐ノ點刻ヲ密布スルヲ以テ暗褐ナルガ如シ、觸角ハ黃褐、第三、第四及ビ第五節ノ末端ハ暗褐、頭ノ兩側、前胸背ノ判然セザル四縱條、同兩側ノ突起、稜狀部ノ二大紋及ビ腹背ノ兩側紋等ハ黑色、稜狀部ノ基部ニ三黃白紋アリテ橫列シ、中央ニアルモノハ小ナリ、尙稜狀部ノ末端モ亦黃白、膜質部ハ黑色、末端ハ無色透明、之レニ一黑紋ヲ裝フ、口吻、脚及ビ體下ハ淡黃褐、胸側、腹側及ビ最後ノ腹面節ニ黑紋ヲ裝フ、腿節ノ末端及ビ脛節ノ兩端ハ黑色、前脛節ノ末端ハ肥大ス、體長四分五厘、此ハ臺灣地方ニ稀ナラズ、甘蔗ノ害蟲ヲ捕食シテ有益ナリ、分布—九州熊本、沖繩、臺灣、支那、印度、

(183) よつもんかめむし

學名 *Urochela jozankana* Mats.

第十三圖 (6) (♀)

昆蟲學上ノ地位 椿象科

體ハ黃褐、暗色ノ點刻多ク、半翅鞘ニアルモノハ小ニシテ少ナシ、觸角ハ黑色、第四及ビ第五節ノ基部ハ黃色、頭頂ノ縱紋、後頭、半翅鞘ノ二紋、胸側及ビ腹側ノ紋列等ハ黑色、膜質部ハ黃褐、約六條ノ縱脈ヲ裝フ、口吻、脚及ビ體ハ淡黃褐、跗節端ハ暗褐、體長(♂)五分内外、此ハ札幌定山溪地方ニ普通ナリ、分布—北海道、

Urochela jozankana n. sp. (Pl. XIII. Fig. 6. ♀)

Ferruginous brown. Pronotum and scutellum rugously and thickly, and hemelytra finely and remotely punctured. Antennae black, 4th and 5th joint ached at the basal half yellow. Head in the middle with 2 fuscous longitudinal lines, occiput fuscous. Hemelytra each with 2 black spots, of which one in the disk and another in the middle of the apical margin. Membrane subhyaline, fulvous, with about 6 longitudinal veins. Connexivum each with a quadratic black spot; pectus on the sides black spotted. Rostrum, legs and body beneath fulvous, tarsi at the apices fuscous.

Length—15 mm.

Hab.—Hokkaido (Sapporo), many specimens collected by the author.

Closely allied to *U. guttulata* Stål, but much larger.

(184) めんきつのかめむし

第十三圖 (7) (♀)

學名 *Sastragela scutellata* Scott.

昆蟲學上ノ地位 椿象科

體ハ黄綠色、點刻多ク、前胸背ニアルモノハ少ナシ、觸角ハ綠色ニシテ體ヨリ少シク短カク、末端ノ三節ハ少シク暗色ヲ帶ブ、頭、前胸背ノ前縁、稜狀部ノ基部ニアル心臟形ノ一紋、口吻、脚及ビ體下ハ黄色、前胸背ノ兩側ニアル角狀突起ハ長ク、其末端ハ圓シ、膜質部黄褐、基部ハ暗褐、雌ノ尾端ノ兩側ハ銳角ヲナシテ突出ス、脚ニ斑紋ヲ缺キ、爪ノ末端ハ褐色、體長(♂)四分—五分五厘、此ハ本州ニ稀ナラズ、

分布—本州、九州、臺灣(臺北)、

(185) みかんごげかめむし

學名 *Rhyncochoris humeralis* Thunb.

昆蟲學上ノ地位 椿象科

第十三圖 (8) (♀)

體ハ綠色(黃綠ナルモノアリ)、點刻多シ、觸角ハ黑色、基節ハ黃色ニシテ黑縦條アリ、頭ハ黃色、内片ノ兩側ハ細ク黑色、前胸背ノ角狀突起ハ少シク下方ヲ向キ、黑點刻ヲ具ヘ、末端ハ鋭ク尖リテ黑色、稜狀部ノ末端ハ圓シ、半翅鞘前縁ノ基部ハ灰黃、點刻ハ少ナシト雖モ密ナリ、膜質部ハ暗褐、九條ノ縦脈ヲ有ス、各腹節ノ後角ハ黑色、其末端ハ鋭ク尖リ下向ス、口吻、體下及ビ脚ハ黃色、口吻ハ長ク約體ト同長、氣門點及ビ腹側ノ紋列ハ黑色、脛節ノ末端及ビ跗節ハ黑色、胸片ノ突起ハ龍骨狀ヲ呈シテ高シ、體長(♂)七分—八分、此ハ臺灣新竹地方ニ普通ナル種類ニシテ柑橘ノ害蟲ナリ、分布—臺灣、支那、馬來、印度、

(186) つのあかかめむし

學名 *Acanthosoma rubicorne* Mats.

昆蟲學上ノ地位 椿象科

第十三圖 (9) (♂)

體ハ黃色、黑色ノ點刻多シ、觸角ハ黑色、第一節ノ内側及ビ第二節ノ基部ハ灰黃、前胸背ニアル點刻ハ大ニシテ粗ナリ、角狀突起ハ紅色ニシテ其末端ハ濃色、稜狀部ノ點刻ハ少ナシ、半翅鞘ノ末端ハ綠色、内片及ビ基部ハ黃褐、前縁ハ黃色、膜質部ハ黃褐、半透明、腹部ヨリモ長ク突出ス、尾端

ノ腹側ハ赤色、口吻、體下及ビ脚ハ黄色、口吻ノ末端ハ黑色、第二腹節ノ棘狀突起ハ稍ヤ前轉節ニ達ス、雄ノ尾節ハ深ク列ラレ、恰モ短カキ鍬子狀ヲナス、跗節及ビ爪ノ末端ハ暗色ヲ帶ブ、體長(♂)五分—五分五厘、此ハ札幌地方ニ産スレドモ稀ナリ、
分布—北海道、

Acanthosoma rubicorne n. sp. (Pl. XIII, Fig. 9, ♂).

Body yellow, black punctured. Antennae black, 1st joint on the inner side and 2nd at the base fulvous. Head above transversely wrinkled, impunctured near the eyes. Lateral angles of the pronotum prominent, rubryred, towards the apex deeper in color; on the hind boarder fulvous. Scutellum sparsely punctured. Hemelytra at the apex olivaceous green, clavus and corium near the suture fulvous, at the costa yellow. Membrane subhyaline, tinged with fulvous, long and exceeding the abdomen. Last 2 connexivum-segments red. Rostrum, body beneath and the legs yellow; rostrum at the apex black, tarsi and claws both at the apices infuscated. Genital segment of the male strongly excavated posteriorly on the sides, each scute angularly produced, covered with short hairs; styles long, porrect, hook-like curved at the apex and where colored black.

Length—♂ 15—♀ 16,5 mm.
Hab.—Hokkaido (Sapporo).
Closely related to *A. expansum* Horv.

(187) せあかつのかめむし

學名 *Acanthosoma distinctum* Dall.

昆蟲學上ノ地位 椿象科

體ハ綠色、黑色ノ點刻多シ、觸角、頭、前胸背ノ前縁、口吻、體下及ビ脚ハ黄色、觸角ハ第二節ノ

第十三圖 (10) (♀)

基部ヲ除キ暗褐ナルモノアリ、頭ニアル點刻ハ小ニシテ少ナシ、前胸背ノ角狀突起ハ銳角ヲナシテ少シク下向シ、其末端ハ暗色、稜狀部ハ赤褐、末端ハ綠色、半翅鞘前縁ノ基部ハ黃色、他ハ全部綠色、膜質部ハ淡黃褐ニシテ半透明、其下ニ透視セラル、腹背ハ赤色、兩側ハ黃色、後縁ハ細ク黑色、尾節ハ赤色、雄ニテハ八字形ノ突起ヲ裝フ、雌ノ最終ノ腹面節ハ其基部ニテ黑色、脚ニ斑紋ヲ缺ク、體長(♂)五分—六分、此ハ本邦最モ普通ナル種類ノ一ナリ、分布—北海道、本州、四國、九州、

(188) おほつのかめむし

第十三圖 (11) (♀)

學名 *Acanthosoma giganteum* Mats.

昆蟲學上ノ地位 椿象科

體ハ綠色、點刻多シト雖モ體ト同色ナルヲ以テ餘リ判然セズ、頭、前胸背ノ前縁、腹側、口吻、體下及ビ脚ノ大部ハ黃色、觸角ハ黑色、第一節ノ基部ハ黃色、頭ニハ點刻ヲ缺キ、横皺多シ、前胸背ノ角狀突起ハ暗褐ニシテ長ク、其末端ハ少シク前方ニ曲リ、銳尖ナリ、稜狀部ノ點刻ハ少ナク、中央ニ判然セザル一縱隆ヲ具ヘ、末端ハ溝ヲナシテ凹陷ス、膜質部ハ黃褐ニシテ半透明、各腹節ノ後縁ハ細ク黑色、尾節ハ赤色、口吻ノ第三節(基部ヲ除キ)及ビ第四節ハ黑色、腿節ハ基部及ビ末端ヲ除キ暗褐、脛節ノ末端及ビ跗節ハ少シク暗色ヲ帶ブ、體長(♀)六分、此ハ京都ニテ鈴木元治郎氏ノ採集セル珍種ナリ、

Acanthosoma giganteum n. sp. (Pl. XIII, Fig. 11, ♀).

Green or yellowish green, closely punctured. Head, pronotum on the anterior margin, abdomen on the sides, rostrum, body beneath and legs (femora fuscous) yellowish. Antennae black, 1st joint at base fulvous. Head above impunctured, with many transverse furrows. Pronotal projections very long, straight, at the apex somewhat curved towards the front, sharply pointed. Scutellum sparsely punctured, in the middle with an indistinct longitudinal keel, at the apex somewhat sulcated. Hemelytra thickly punctured, membrane fulvous, subhyaline, somewhat exceeding the abdominal end, abdomen on each segment black spotted, on each hind angle produced into a very small spine. Pygidium red, divided into two roundish lobes. The 3rd (except the base) and 4th joint of the rostrum black. Femora except the basis mostly fuscous, tibiae at the apices and tarsi somewhat infuscated.

Length—♀, 18 mm.

Hab.—Honshu (Kyoto), one ♀ specimen collected by Mr. M. Suzuki.

(189) つきわへりかめむし

第十三圖 (12) (♀)

學名 *Derepteryx obscurata* Stål.

昆蟲學上ノ地位 緣椿象科 (Coreidae)

體ハ暗褐色、黄褐ノ短毛ヲ密生ス、觸角ハ體ヨリ少シク短カク、第四節ハ黄色、前胸背ハ弦月形ニ上方ニ曲リ、其末端ハ銳角ヲナシテ尖リ、前縁ニ六個、後縁ニ十數個ノ齒狀突起アリテ、前縁ニアルモノハ長ク大ナリ、全面粗糙ニシテ、横皺多ク、中央ニ判然セザル一縦溝アリ、稜狀部小ニシテ、中央ニ一縦溝ヲ裝フ、半翅鞘ニ凸凹多ク、判然セル二縦脈アリ、膜質部ハ暗色、脈ハ判然シ、灰白

ノ短毛ヲ粗生ス、腹側縁ハ甚ダシク弓状ヲナシテ突出シ、葉状ヲナス、口吻、體下及ビ脚ハ暗褐、黄色ノ短毛多シ、口吻短カク、腿節ノ末端ニ葉狀ノ附屬物ヲ具ヘ、後腿節ノ下面ニ更ニ三四個ノ小齒ヲ列ヌ、跗節ハ黄褐、體長(♀)八分五厘、此ハ臺灣茅埔庄及ビ阿里山ニテ捕獲セル珍種ナリ、分布—臺灣、支那、

(190) しょうかへりかめむし

第十三圖 (13) (♀)

學名 *Homocercus shokaensis* Mats.

昆蟲學上ノ地位 緣棒象科

體ハ淡黄褐、粗大ノ點刻ヲ密布シ、黄色ノ短毛多シ、觸角ノ末端ニ至ルニ從ヒ赤色ヲ帶ブ、小顆粒多ク、第二節ノ末端ハ暗褐、單眼ハ紅色、後頭ハ暗色、前胸背後縁ノ兩側ハ稍ヤ楕圓形ヲナシテ凹陷ス、稜狀部ノ末端ハ暗褐、半翅鞘ニ三縱脈アリテ稍ヤ判然ス、膜質部ハ光澤アル淡黄褐ニシテ半透明、腹側縁ハ黄色、少シク弓状ヲナシテ突出ス、口吻、體下及ビ脚ハ黄色、各胸側片ニ一黒點アリ、氣門ノ周圍ハ細ク黒色、脚ニ小顆粒多ク、之レヨリ各一本ノ黄短毛ヲ生ズ、體長(♂)三分五厘、(♀)四分五厘、此ハ臺灣彰化、土林地地方ニ捕獲セルモノナリ、分布—臺灣、

Homocercus shokaensis n. sp. (Pl. XIII, Fig. 13, ♀).

Pale yellowish brown, thickly punctured and covered with very short hairs. Antennae towards the apices reddish, fine granulated and shortly haired. Head in the middle with a longitudinal furrow, the hind margin of the occiput narrow.

ly fuscous. Pronotum in the middle with an indistinct longitudinal impunctured line, which continues to the scutellum, on the hind margin near the humeral angles each with an oblong impression. Scutellum at the apex fuscous. Hemelytra yellowish brown, shining, membrane subhyaline, not reaching the abdominal end, abdomen on the side yellow, scarcely produced. Rostrum, body beneath and legs yellowish, pleurae each with a small black spot. Stigmata of abdomen each with a black ring. Last abdominal segment of the male on the hind margin narrowly rounded, while that of the female being nearly truncated.

Length—♂ 10 mm., ♀ 13 mm.

Hab—Formosa (Shoka, Shirin), collected by the author.

(191) おほくもへりかめむし

第十三圖 (14) (♀)

學名 *Uheriella marginata* Uhl.

昆蟲學上ノ地位 綠椿象科

體ハ綠色、點刻ヲ密布ス、觸角ハ體ヨリ長ク、紅色ニシテ第一節ノ外側ニ黑縱條アリ、第二及ビ第三節ノ末端及ビ第四節ノ大部ハ暗褐、頭ハ灰白、前頭ノ二紋及ビ單眼ハ紅色、前胸背ノ兩側ハ細ク黑色、鋸齒狀ノ小齒ヲ列ス、後緣角ハ稍ヤ直角ヲナシテ突出ス、稜狀部ニ横皺多ク、點刻少ナシ、半翅鞘ハ黃褐、少シク綠色ヲ帶ブ、膜質部ハ黃褐、半透明、腹背ニアル暗色ノ二紋ヲ透視シ得ベシ、口吻ハ綠色、體下ハ黃色、脚ハ綠色、基節、轉節及ビ腿節ノ基部ハ黃色、爪ハ黃色、末端ハ褐色、體長七分—八分、此ハ本州ニ産スレドモ餘リ多カラズ、分布—本州、九州、

Uhlriella (n. g.)

Differs from *Homoeocerus* Burm. as follows : Antennae longer, in the male as long as the body, in the female much shorter than the body, 1st joint robust, clavate, scarcely shorter than the 2nd, 3rd and 4th short, the former being somewhat longer than the latter. Pronotum at the hind angle very high, towards the anterior margin sharply sloping, lateral angles acutely produced. Scutellum much longer than the basal width. Membrane with about 16 longitudinal veins.

Type : *Uhlriella marginata* Uhl.

Homoeocerus marginatus Uhl. (Proc. Nat. Mus. U. S. A. P. 165, 1896).

(192) いはゑきへりかめむし

第十三圖 (15) (♂)

學名 *Iwasakia diguttata* Mats.

昆蟲學上ノ地位 綠椿象科

體ハ暗黃褐、點刻多シ、觸角ハ少シク綠色ヲ帶ビ、第一節ノ基部、第一、第二及ビ第三節ノ末端、第四節ノ基部並ニ末端ノ大部ハ暗色、頭頂ニ一縱溝ヲ具ヘ、前胸背ノ兩側ハ暗色、兩側ノ突起ハ銳角ヲナシテ突出シ、其末端ハ暗色、稜狀部ノ末端ハ暗黃、半翅鞘ノ稍ヤ中央ニ暗黃色ノ各一橫紋アリ、膜質部ハ尾端ヲ越ヘ、黃褐、半透明、口吻、體下及ビ脚ハ黃色、後腿節ノ外側ハ黃褐、脛節末端ノ半部及ビ跗節ハ綠色、體長(♂)五分、此ハ沖繩石垣島ニテ岩崎卓彌氏ノ採集セル珍種ナリ、分布—沖繩、

Iwasakia (n. g.)

Closely allied to the genus *Homoeocerus* Burm., but easily distinguished as follows :

1. Antennae much longer, somewhat shorter than the body, 1st and 4th subequal, 3rd being shortest.
2. Rostrum longer, reaches the mesocoxae, 1st, 2nd and 4th subequal, 3rd shortest.
3. Hind pronotal angles acutely produced.
4. Scutellum much longer than the basal width.
5. Hemelytra at the apex narrower and longer, membrane at the base with a transverse triangular cell, from which emits about 15 longitudinal (some of them forked) veins. Type: *Iwasakia biguttata* n. sp.

Iwasakia biguttata n. sp. (Pl. XIII, Fig. 15, ♂).

Dark yellowish brown, closely punctured, but not haired. Antennae longer than the body, with a greenish tinge, the first joint at the base outwardly, the 1st, 2nd and 3rd each on its apex, the 4th at the base and the larger portion of the apical joint fuscous. Head with a longitudinal groove between the eyes. Prothorax at the sides fuscous, near the anterior margin in the middle with 2 short fuscous longitudinal lines, humeral angles sharply pointed. Scutellum at the apex pale yellowish. Hemelytra near the middle each with a pale yellowish, oblong, transverse spot. membrane yellowish brown, shining, exceeding somewhat the abdominal end, abdomen on the sides flavescens. Rostrum, body beneath and legs pale yellowish, posterior femora above yellowish brown, tibiae on their apical halves and the tarsi olivaceous green. Last dorsal segment on the hind margin in the middle shallowly notched.

Length—♂ 15 mm.

Hab. — Riukiu (Yayeyama), one ♂ specimen collected by Mr. T. Iwasaki.

(193)

たいわんへりかめむし

第十三圖 (16) (♀)

學名 *Iwasakia formosana* Mats.

昆蟲學上ノ地位 綠椿象科

體ハ黃褐、觸角ハ赤色、體ヨリ少シク短カク、第四節ハ暗褐、基部ハ黃色、頭頂ニハ黑色ノ小顆粒多ク、前胸背ノ兩側ハ暗褐、暗褐ノ點刻多ク、前縁ニアル點刻ハ地色ニシテ粗ナリ、後縁角ハ稍ヤ直角ヲナシテ突出シ、其後縁ニ小齒ヲ列ヌ、稜狀部ノ點刻ハ粗、前縁及ビ兩側ニ點刻ナキ部分アリ、末端ハ少シク黃色ヲ帶ブ、半翅鞘ノ點刻ハ前胸背ニアルモノヨリ大ニシテ密ナリ、脈ハ判然シ、外縁ハ赤褐ヲ帶ブ、膜質部ハ暗褐ニシテ銅色ノ光澤ヲ具ヘ、少シク腹端ヲ越ユ、口吻、體下及ビ脚ハ黃色、尾端ノ二節ヲ除キ胸腹各節ノ兩側ニ一個ノ小黑紋ヲ裝フ、脛節及ビ跗節ハ赤色、爪ハ黃色、其末端ハ暗褐、體長(♀)六分五厘、此ハ臺灣大嵯炭ニテ捕獲セル珍種ナリ、分布—臺灣、

Iwasakia formosana n. sp. (Pl. XIII, Fig. 16, ♀).

Yellowish brown. Antennae red, somewhat shorter than the body, the 4th joint fuscous, at the base (except the extreme base) yellowish. Vertex speckled with small black granulations, being somewhat arranged in 3 longitudinal lines. Pronotum at the sides narrowly fuscous, dark punctured, on the anterior border the punctures unicolorous and not very distinct. Humeral angles right angularly produced, each on its hind margin with some small teeth. Scutellum sparsely punctured, at the base and on the sides not punctured, at the extreme apex yellowish. Elytra more largely and closely punctured than that of the pronotum, the longitudinal veins distinct, at the apex reddish. Membrane fuscous, with a coppery lustre, little exceeding the tip of abdomen. Rostrum, body beneath and legs yellow. Thoracal and abdominal segments, except the last 2 segments of the abdomen, each with a small black spot on the sides. Tibiae and tarsi red, claws yellow, at their tips fuscous.

Length—♀ 19.5 mm.

Hab.—Formosa (Taikokan).

(194) つまきへりかめむし

學名 *Pachycephalus opacus* Uhl.

昆蟲學上ノ地位 綠椿象科

體ハ黑色、黄色ノ短毛多シ、觸角ハ體ヨリモ少シク短カク、各節ノ基部及ビ第四節基部ヲ除キハ橙黄色、頭頂ノ中央ニ二凹陷ヲ具ヘ、後頭ニ二黄紋ヲ裝フ、前胸背ニハ粗大ノ點刻多ク、中央及ビ前縁ニ各一個ノ横溝アリ、稜狀部ニ顆粒ヲ粗布シ、末端ハ少シク橙黄色、半翅鞘ニ點刻ヲ粗布シ、縦脈ハ判然セズ、外縁ノ中央ニ判然セザル一黄紋ヲ裝フ、膜質部ハ暗黄褐ニシテ遙尾端ニ達セズ、不定脈多シ、腹側ハ甚ダシク突出シ、各接合膜節ノ後縁ハ黄色、口吻ハ暗褐、體下及ビ脚ハ黑色、跗節ハ黄色、體長(♂)三分一三分二厘、此ハ本州ニ稀ナラズ、分布—本州、九州、

第十三圖 (17) (♀)

(195) あしびろへりかめむし

學名 *Leptoglossus membranaceus* F.

昆蟲學上ノ地位 綠椿象科

體ハ黑色、點刻多シ、第二及ビ第三觸角節ノ中央並ニ第四節ノ末端ハ橙黄色、頭頂ノ後方ニアル二紋、頭下ノ兩側ニアル各一縦條、前胸背ノ中央ニ近キ弓狀帶前方ニ曲ル、同後縁ノ中央ニアル一小點、稜狀部基部ノ兩側及ビ末端ニアル一小點、半翅鞘ノ中央ニアル一小點、各接合膜節ノ基部ニア

第十三圖 (18) (♀)

ル一紋、胸面及ビ腹面ニ散在セル數十紋ハ橙黄色、前胸背ノ後緣角ハ尖リ、前方ニ向フ、膜質部ハ少シク尾端ヲ越ユ、腿節ニ小齒ヲ列ヌ、後腿節ハ長ク、且ツ肥大シ、後脛節ハ葉狀ヲナシテ膨レ、中央ニ一縦隆アリ、後方ノ肥大セル部分ニ三齒ヲ具ヘ、前方ノ肥大セル部分ニ一黄紋アリ、體長(♂)(♀)七分内外、此ハ沖繩及ビ臺灣ニ稀ナラズ、胡瓜及ビ南瓜ノ害虫ナリ、分布—沖繩、臺灣、支那、比利賓、印度、

(196) ひげながへりかめむし

第十三圖 (19) (♂)

學名 *Notobitus melagris* F.

昆蟲學上ノ地位 緣椿象科

體ハ暗褐、點刻多シ、光線ノ工合ニヨリ少シク紺色ヲ現ハス、觸角ハ稍ヤ體ト同長、第四節ノ基部及ビ末端ハ黄色、觸角砧ハ黄褐、前胸背ノ前緣ニ近ク一横溝ヲ具ヘ、後緣角ハ圓ク、餘リ突出セズ、稜狀部ノ末端ハ黄褐、半翅鞘ノ縦脈ハ判然ス、膜質部ハ銅色ノ光澤ヲ放チ、少シク尾端ヲ越ユ、口吻ノ基部ハ黄色、體下ハ天鷲絨様ノ光澤ヲ放ツ、跗節、前中兩脛節(基部ヲ除キ)及ビ同腿節端ノ一紋ハ黄色、腿節下ニ銳齒ヲ列ヌ、後腿節下ニアルモノハ長ク、其内中央ニアルモノハ大ナリ、尙後脛節ノ内方ニモ小齒ヲ列ヌ、體長(♂)ハ八分—九分、此ハ臺灣埔里社地方ニ稀ナラズ、分布—臺灣、支那、

(197) ふたすちはりかめむし

第十三圖 (20) (♀)

學名 *Metactetus bivittatus* Mats.

昆蟲學上ノ地位 緣椿象科

體ハ橙黄色、點刻多シ、觸角ハ體ヨリ少シク短カク、黒藍色、第二節最モ長ク、第一節ハ棍棒狀ヲナス、第四節ハ暗褐、頭ハ黒藍色、後頭ノ一紋ハ黄色、前胸背ノ前縁、後縁角及ビ其ノ針狀突起ハ黒藍色、後縁ノ中央ニアル三角紋及ビ稜狀部ハ黒色、半翅鞘ハ黄色、前縁細ク及ビ末端ハ暗褐、膜質部ハ暗褐、半透明、基部ニ一胞室アリテ之レヨリ約十三條ノ縦脈ヲ放出ス、各接合膜節ノ後縁ハ黒色、體下ハ橙黄色、頭下、胸側紋、各腹節第一節ヲ除キノ後縁角、第三節ノ兩側ニアル一紋、尾節ノ一紋並ニ脚ハ黒藍色、但シ脚基節ノ基部ハ黄褐、跗節ハ暗褐、口吻ハ暗褐、第一節及ビ第二節ノ基部ハ黄色、體長(♂)五分—六分、此ハ沖繩地方ニテ黒岩恒氏ノ採集セルモノナルガ稀ナラザルガ如シ、
分布—沖繩、

Metactetus (n. g.)

Closely allied to *Homosocerus* Burm, but differs as follows :

Antennae somewhat shorter than the body, 1st joint clavate, longer than 3rd, shorter than 4th, 2nd longest. Rostrum long, nearly reaches the metacoxae, all joints subequal, only the 3rd a little shorter than others. Pronotum on the hind angles each with a sharp forwardly pointed spine. Membrane at the base with a transverse narrow cell, from which radiates about 13

(some of them forked) longitudinal veins.

Type : *Metacletus bivittatus* n. sp.

Metacletus bivittatus n. sp. (Pl. XII, Fig. 20, ♀).

Orange yellow. Head punctured, dark blue, behind the ocelli yellowish and impunctured. Antennae dark blue, 4th joint dark brown. Pronotum very finely, sparsely punctured, dark blue, with 2 yellowish longitudinal oblong spots, in some specimens the anterior margin, the humeral angles with their spines and a triangular spot at the hind margin dark blue, scutellum dark blue, transversely wrinkled and coarsely punctured. Hemelytra fuscous, in some specimens flavescens, clavus coarsely and corium finely punctured. Membrane scarcely exceeding the abdominal end, subhyaline, fuscous, with about 13 longitudinal veins. Each connexivum-segment at the hind angles fuscous. Head beneath dark blue, thorax and abdomen beneath orange yellow, each thoracal segment with 2 dark blue spots on each side, each abdominal segment at the hind angles (except 1st segment), a spot on each side of 3rd segment and a spot on the last ventral segment dark blue. Rostrum pitchy black, 1st and the basal part of 2nd joint yellowish. Legs dark blue, the coxae at the basis yellowish brown, the tarsi fuscous.

Length—♂ 13—♀ 17 mm.

Hab.—Okinawa (Riukiū), 3 specimens collected by Mr. K. Kuroiwa.

(198) あしぶんにへりかめむし

第十三圖 (21) (♂)

學名 *Anoprocnemis curvipes* F.

昆蟲學上ノ地位 緣椿象科

體ハ暗褐、黄色ノ短毛ヲ密生シ、粗大ノ點刻多シ、觸角ハ黃褐、第四節ハ黄色、前胸背ノ中央ニ細

キ灰白毛ノ一線ヲ具ヘ、此ハ稜狀部ノ末端ニ達ス、半翅鞘ハ赤褐、膜質部ハ暗色ニシテ銅色ノ光澤ヲ放チ、體下及ビ脚ハ暗褐、臭腺孔ハ橙黃色、腹面ノ兩側ハ黃褐、後肢ハ頗ル發達シ、腿節ノ基部ニテ弓狀ニ曲リ、其基部ニ一齒ヲ具ヘ、末端ニ近キ下面ニ三角形ノ葉狀突起アリ、此他顆粒突起ヲ散在ス、基節、轉節及ビ跗節ハ黃褐、體長(♂)八分—九分、此ハ臺灣地方ニ普通ナル種類ニシテ鳳科植物ニ有害ナリ、

分布—臺灣、支那、馬來、印度、

(199)
いごかめむし

學名 *Yemma exilis* Horv.

第十四圖 (1)
(♀)

昆蟲學上ノ地位 絲椿象科 (Berytidae).

體ハ淡黃褐、觸角ハ體ヨリ長ク、第四節ハ短カクシテ紡錘狀ヲ呈シ、暗色ニシテ末端ハ黃色、頭ハ長クシテ胸部ト稍ヤ同長、兩側ニ各一黑條ヲ縱走シ、單眼ノ前方緊縮ス、前胸背ハ長ク、前縁ノ半部ニ點刻少ナシト雖モ、後半部ニハ粗大ノ點刻多シ、後半ハ黃褐、其中央ニ褐色ノ一縱條ヲ具ヘ、後縁ノ兩側ニ二褐紋アリ、稜狀部ニ直立セル針狀ノ長突起ヲ具ヘ、前翅短カクシテ尾端ニ達セズ、腹背ノ中央ニ褐色ノ一縱條アリ、脚ハ頗ル細ク、小褐紋ヲ散在ス、跗節ハ暗色、體長二分—二分五厘、此ハ播州地方ニ稀ナラズ、
分布—本州、九州、

(200) こまだらかめむし

學名 *Lygaeus hospes* F.

昆蟲學上ノ地位 長椿象科 (*Lygaeidae*)

體ハ黑色、頭赤色、前頭ノ一紋、後頭ノ二紋、前胸背ノ兩側、中央ノ一縱條前縁ニ達セズ、稜狀部ノ兩側及ビ末端ハ赤色、半翅鞘ハ赤色、基部及ビ中央ノ一紋(前縁ノ外半黑色ナルモノアリ)ハ黑色、各胸側ノ一紋及ビ腹節後縁ハ赤色、脚ハ黑色、脛節ノ末端及ビ跗節ノ下面ニ黃褐ノ短毛多シ、體長(♂)三分五厘—四分、此ハ臺灣ニ稀ナラズ、(♀)五分—五分五厘、分布—本州、九州、沖繩、臺灣、支那、印度、

第十四圖(2) (♀)

(201) へにながかめむし

學名 *Antilochus coqueberti* F.

昆蟲學上ノ地位 星椿象科 (*Pyrochoridae*)

體ハ朱色、觸角ハ黑褐、基部ハ赤褐、頭ニ點刻ヲ缺ク、前胸背ノ前縁ニアル三角形ノ部分ニ粗大ノ點刻多ク、其後部ニアル瓢葦形ノ部分ニ點刻ヲ缺キ、更ニ其後方ニアル半部ハ其中央ニテ大形ノ點刻ヲ粗布ス、稜狀部ノ基部ニアル點刻ハ暗色、半翅鞘ニ小點刻ヲ粗布シ、接合部ニ暗色ノ點刻ヲ並列ス、膜質部ハ黑色、基部ニ灰白ノ小部分アリ、口吻、體下及ビ脚ハ赤色、脛節及ビ跗節ハ暗褐、各腹節ノ後縁ハ凹陷シ、其部分ハ黑色、體長(♂)五分—五分五厘、此ハ臺灣ニ産スレドモ餘リ多カ

第十四圖(3) (♂)

ラズ、

分布—臺灣(臺南、恒春)、

(202) さへりながかめむし

第十四圖 (4) (♀)

學名 *Lygaeus flavomarginatus* Mats.

昆蟲學上ノ地位 長椿象科

體ハ黑色、點刻多シ、頭、前胸ノ兩側及ビ半翅鞘ノ前縁ハ淡黃褐、雄ニアリテハ前胸背ハ全部淡黃褐、觸角、口吻及ビ脚ハ暗褐、頭下及ビ尾節ハ黃色、胸下及ビ腹面ハ何レモ兩側ヲ除キ褐色、膜質部ハ黑色、長クシテ遙尾端ヲ越ユ、稜狀部ハ小ニシテ兩側ハ隆起シ、中央ニ一縱隆アリ、體長(♂)四分(♀)七分、此ハ沖繩ニテ黒岩恒氏ノ採集セルモノナリ、
分布—沖繩、

Lygaeus flavomarginatus n. sp. (Pl. XII, Fig. 4, ♀).

Black, head, thorax (the female on the sides fulvous) and the costal region of the hemelytra fulvous. Antennae, rostrum and legs dark brown. Head beneath yellow. Body beneath fuscous, covered with very fine, short, grayish hairs, on the sides and the pygidium fulvous. Head impunctured, pronotum coarsely and closely punctured, scutellum along the sides and in the middle each with a narrow longitudinal ridge, very finely and closely punctured, at the apex fulvous. Hemelytra finely and closely punctured, membrane fuscous, much exceeding the abdominal end.

Length—♂ 12, ♀ 19-21 mm.

Hab.—Okinawa (Riukiū), many specimens collected by Mr. K. Kuroiwa.

(203) ながめだかがいた

第十四圖 (5) (♀)

學名 *Lyggesoma flavipes* Mats.

昆蟲學上ノ地位 長椿象科

體ハ暗黃色、點刻ヲ粗布ス、灰白ノ短毛多シ、觸角及ビ脚ハ黃色、前者ノ第四節ハ暗色、頭ハ黑色、前胸背ノ前縁ハ褐色、前縁ニ近キ兩側紋及ビ後縁角ハ暗色、稜狀部ハ暗褐、末端ハ黃褐、半翅鞘ノ前縁ハ黃色ニシテ之レニ點刻ヲ缺キ、末端ハ暗色、膜質部ハ灰白、半透明、中央ニ暗色ノ一縱條アリ、體下ハ暗褐、兩側縁ハ黃色、跗節ノ末端ハ暗色、體長(♂)一分二厘内外、此ハ京都地方ニ稀ナラズ、鈴木元治郎氏ノ採集セルモノナリ、
分布—本州(京都)、

Lyggesoma flavipes n. sp. (Pl. XIV, Fig. 5, ♀).

Body fulvous, coarsely and sparsely punctured, covered with very fine short grayish white hairs. Antennae and legs yellowish, 4th joint of the former fuscous. Head black. Pronotum on the anterior border brown, 2 scar-like spots near the anterior margin and the humeral angles fuscous. Scutellum dark brown, at the apex fulvous. Hemelytra on the costa yellow, impunctured, at the apex fuscous. Membrane grayish white, subhyaline, near the middle with a longitudinal indistinct brownish stripe. Body beneath dark brown, on the sides yellowish. Tarsi at the apices and claws fuscous.

Length—♂ ♀ 3.5—4 mm.

Hab.—Ionshu (Kyoto), 2 (♂ ♀) specimens collected by Mr. M. Suzuki.

(204) ひめめだかがいた

學名 *Nysius plebejus* Dist.

昆蟲學上ノ地位 長椿象科

體ハ暗褐、粗大ノ點刻多シ、觸角及ビ脚ハ黃色、前者ノ第一及ビ第二節ノ末端ハ少シク暗色、第一節ニハ暗色點ヲ散在ス、頭ノ中央ニ赤褐ノ一縱條アリ、前胸背前緣ノ三紋、中央ノ二紋及ビ兩側紋ハ黃色、稜狀部末端ノ小部ハ淡黃、半翅鞘ハ淡黃、末端紋及ビ外緣ノ中央紋ハ暗色、膜質部ハ灰白、半透明、長クシテ遙尾端ヲ越ユ、尾節ノ二白紋ヲ透視シ得ベシ、體下ハ暗色、中後兩胸側片ノ後緣ハ黃白、腹面ノ後方ニ黃白紋ヲ散在ス、腿節ニ黑點ヲ散在シ、第一跗節ノ末端及ビ第三跗節ハ褐色、體長(♂)(♀)一分三厘内外、此ハ播州地方ニ普通ナリ、分布一本地州、

第十四圖(6) (♀)

(205) おほこばねがいた

學名 *Macropes major* Mats.

昆蟲學上ノ地位 長椿象科

體ハ光澤アル黑色、頭ハ小ニシテ、前頭ノ兩側ニ點刻ヲ密布ス、觸角ノ第三節ハ基部ヲ除キ黃褐、前胸背ハ平タク、中央ニ一縱溝ヲ具ヘ、前緣、兩側及ビ後緣ニ點刻ヲ密布スレドモ中央ハ滑澤ナリ、稜狀部ニ點刻多ク、中央ニ一縱隆アリ、前翅ハ短カク遙尾端ニ達セズ、灰白ニシテ縱脈ハ暗褐、膜

第十四圖(7) (♀)

質部ノ中央ニ暗色ノ一大紋アリ、體下及ビ脚ハ黑色、腿節ハ肥大シ、其下方ニ銳齒ヲ列ヌ、殊ニ前腿節ハ甚ダシク膨大ス、跗節ハ褐色、體長(♀)三分二厘、此ハ臺灣達邦社ニテ捕獲セル珍種ナリ、分布—臺灣、

Macropes major n. sp. (Pl. XIV, Fig. 7, ♀).

Shining black. Antennae black, 3rd joint except the base yellowish brown. Head on the sides punctured. Pronotum smooth in the middle, with a longitudinal furrow, on the anterior margin and sides, as well as on the posterior half coarsely punctured. Scutellum coarsely punctured, along the sides and on the apical half in the middle distinctly ridged. Hemelytra with the membrane grayish white, the longitudinal veins fuscous, the membrane near the base with a large fuscous spot, the tip of membrane reaches nearly the end of the penultimate abdominal segment. Rostrum dark brown, at the base brown. Body beneath and legs shining black, femora large, beneath with two rows of sharp teeth, the anterior femora short and very much enlarged, tarsi yellowish brown.

Length—♀ 9.6 mm.

Hab.—Formosa (Tappan), 1 ♀ specimen collected by the author.

(206)

はりまがいた

第十四圖(8) (♀)

學名 *Pamera harimaensis* Mats.

昆蟲學上ノ地位 長椿象科

體ハ黑色、灰白ノ短毛多ク、黃褐ノ長毛ヲ粗生ス、觸角ノ末端ハ赤褐、頭ニハ點刻ヲ密布ス、前胸背ノ前半ハ稍ヤ球形ニシテ微小ノ縮刻多ク、中央ハ甚ダシク緊縮ス、後方ノ小半ニ粗大ノ點刻多シ、

稜狀部ニハ點刻少ナク、中央ニ近ク弓狀ノ橫隆起アリテ、更ニ其中央ヨリ後縁ニ一縱隆ヲ送ル、半翅鞘ニ粗大ノ點刻ヲ縱列シ、翅底ニ近キ前縁ノ半部、末端ニ近キ半月形ノ一紋及ビ外縁ノ中央ニ近キ一小紋ハ灰白、膜質部ハ黑色ニシテ、少シク腹端ヲ越へ、末端及ビ前縁ノ基部ニアル一小紋ハ灰白、口吻、體下及ビ脚ハ黑色、各口吻節ノ基部ハ赤褐、腹面ニ點刻ヲ缺キ、灰白ノ短毛ヲ密生シ、爲メニ天鷲絨様ノ光澤ヲ放ツ、胸側ニハ點刻多シ、前腿節ハ甚ダシク膨大シ、其下面ニ二列ノ小齒アリテ、其内三個ハ大ナリ、同節ノ末端及ビ脛節ノ基部ハ赤褐、中後兩肢ノ基部ハ黃白、跗節ハ褐色ニシテ、各節ノ基部ハ淡色ナリ、體長(♀)二分五厘、此ハ本州ニ産スレドモ餘リ多カラザルガ如シ、分布—本州(京都、播州)。

Pamera harimaensis n. sp. (Pl. XIV, Fig. 8, ♀).

Black, covered with short grayish white and few long brownish hairs. Antennae at the apices reddish brown.

Head closely and very finely punctured, a larger anterior half of the pronotum globular, very finely wrinkled, a minor posterior half coarsely punctured. Scutellum sparsely punctured, in the middle with a bow-shaped transverse ridge, from its middle it sends a longitudinal keel to the tip.

Hemelytra with many longitudinal puncture-rows, costa at the basal half, a crescent formed spot near the apex and a small spot near the middle on the outer margin grayish white. Membrane tuscous, the tip and a small basal spot at the costa also grayish white. Rostrum, body beneath and legs black; each segment of the rostrum at the base reddish brown; venter with short grayish white velvety hairs; anterior femora much thickened, beneath with a row of minute teeth, 3 of which being larger, the tips of the same femora and the basis of the tibiae reddish brown, the basal parts of the middle and hind femora grayish white, tarsi brown, the basal part of each segment paler.

Length—♀ 7.5 mm.

Hab.—Honshu (Harima and Kyoto).

Closely allied to *P. hemiptera* Scott, but much larger.

(207) よつぼしがいた

學名 *Pamera pallicornis* Dall.

昆蟲學上ノ地位 長椿象科

第十四圖 (9) (♀)

體ハ黑色、觸角ハ淡黃褐、第一節ノ一縱條、第三節ノ末端及ビ第四節ノ基部並ニ末端ノ半部ハ暗灰色、頭ニ小點刻ヲ密布シ、灰白ノ短毛多シ、前胸背ノ前半ニ點刻少ナク、後半ニ多ク、前縁ハ細ク赤褐、後縁ニ四個ノ黃白紋アリテ横列ス、稜狀部ノ中央ニ短カキ弓狀ノ横隆アリテ其中央ヨリ後縁ニ一縱隆ヲ出スコト前種ト異ナラズ、末端ハ黃白、點刻ハ小ニシテ密ナリ、半翅鞘ハ黃白、點刻ハ暗色、翅底ニ近キ一紋、前縁ノ末端ニ近キ一紋、末端ノ一紋並ニ後縁角ハ黑色、但シ後縁角ニ二白紋ヲ裝フ、膜質部ハ暗灰色、前縁ノ基部ニ近ク暗色ノ一紋アリ、口吻ハ黃褐、基節及ビ末端ノ小部ハ黑色、體下ハ黑色、天鷲絨様ノ灰白毛多シ、脚ハ黃色、前腿節ハ末端ヲ除キ、中後ノ兩腿節ハ各基半部ヲ除キ黑色、腿節ハ少シク肥大シ、二列ノ小齒アリテ其内二個ハ大ナリ、脛節及ビ跗節ノ末端ハ褐色、體長二分二厘、此ハ本州岐阜地方ニハ稀ナラズ、

分布—本州、九州、八丈島、沖繩、

(208) もんくろがいた

學名 *Pamera nietheri* Dohr.

昆蟲學上ノ地位 長棒象科

體ハ黑色、灰白ノ短毛及ビ黃褐ノ長毛多シ、觸角第四節ノ基節ニ近キ一部ハ黃白、頭頂ニ二縱溝ヲ具ヘ、前方ニハ點刻多シ、前胸背ノ前半ニハ點刻少ナク、後半ニハ點刻多シ、後半ノ中央ニ黃褐ノ一紋アリ、稜狀部ニ點刻少ナク、末端ニ一縱隆ヲ裝フ、半翅鞘ハ灰白、內片、中央ノ一紋及ビ末端ハ黑色、膜質部ハ暗色、外半ハ灰白ニシテ、其周圍ニ灰白紋ヲ散在ス、口吻ハ暗褐、第二節ハ黃色、第三節ハ黃褐、脚ハ黑色、轉節及ビ腿節ノ基部ハ黃色、脛節及ビ跗節ハ黃褐、但シ後脛節ハ少シク濃色、體下ハ暗色、腹側ニ黃白紋アリ、體長四分、此ハ沖繩地方ニ稀ナラズ、分布—本州、九州、八丈島、沖繩、臺灣、南方支那、印度、

第十四圖 (10) (♀)

(209) しろほしがいた

學名 *Aphanus albomaculatus* Scott.

昆蟲學上ノ地位 長棒象科

體ハ黑色、灰白ノ短毛多シ、觸角ハ暗褐、第二節ノ基部ハ黃褐、頭ニハ小點刻多シ、前胸背ノ兩側ハ黃白、前半及ビ兩側ニ點刻ヲ缺キ、後半ニ點刻多ク、黃白色ノ部分ニアル點刻ハ暗色、後縁ノ中央ニ黃白ノ一縱條アリ、稜狀部ニ點刻ヲ粗布シ、中央ニ近キ二小紋及ビ末端ハ黃白、半翅鞘ハ黃白、

第十四圖 (11) (♀)

暗色ノ點刻多シ、末端ニ近キ一大紋及ビ末端ハ黒色、此二紋ノ中間ニアル點刻ハ少ナク、且ツ灰色ナルヲ以テ黃紋ヲ有スルガ如シ、膜質部ハ灰白、灰色ノ小紋ヲ散在ス、尾端ニ達セズ、口吻、體下及ビ脚ハ黒色、脚基部ノ外側ニアル一紋及ビ後胸側ニアル一横帶ハ黃白、轉節、腿節ノ基部、中後兩脛節及ビ跗節ハ黃褐、但シ脛節ノ末端及ビ第二跗節ノ末端ハ暗褐、體長(♂)(♀)二分五厘内外、此ハ本邦ニ餘リ多カラズ、
分布—本州、

(210) こうしゆんながめむし

第十四圖 (12) (♂)

學名 *Lygaeus koshunensis* Mats.

昆蟲學上ノ地位 長椿象科

體ハ朱色、灰白ノ短毛多シ、觸角ハ黒褐、觸角ノ基部ハ少シク黃褐、前頭ノ末端ハ少シク暗色ヲ帶ブ、前胸背ノ兩側及ビ前縁ハ隆起ス、中央ニハ前後兩線ニ達セザル一縦隆アリテ、其兩側ハ溝狀ヲナシテ凹陷ス、點刻多シ、稜狀部ノ兩側ハ少シク暗色ヲ帶ビ、中央ハ凹陷シ、末端ニ近ク少シク隆起セル部分アリ、半翅鞘ハ朱色、内片(Clavus)及ビ外片(Corium)ノ内片ニ接スル大部ハ暗褐、膜質部ハ暗色ニシテ遙尾端ヲ越ユ、口吻ハ黒褐、後轉節ニ達ス、體下ハ朱色、胸面及ビ腹面ノ中央ハ少シク暗色ヲ帶ブ、脚ハ暗褐、基部ハ朱色、雄ノ尾節ハ二突起ヲ具ヘ、之レニ灰白ノ長毛多シ、體長四分五厘、此ハ臺灣恒春地方ニ稀ナラズ、

分布—臺灣、

Lygaeus koshunensis n. sp. (Pl. XIV, Fig. 12, ♂).

♂ Dark red, covered with short grayish white hairs. Antennae fuscous, at the base narrowly fulvous. Head at the apex infuscated. Pronotum coarsely punctured, at the sides and on the anterior margin each with a border ridge, in the middle with a short longitudinal keel, on its sides being distinctly furrowed. Scutellum in the middle distinctly excavated, near the tip somewhat elevated. Hemelytra dark red, clavus and the corium near the suture fuscous. Membrane fuscous, distinctly exceeding the abdominal end. Rostrum dark brown, long, reaches the hind coxae. Body beneath dark red, thorax and the venter in the middle infuscated. Legs fuscous, coxae dark red. Last ventral segment on the hind margin with 2 horn-like projections and grayish white long hairs.

Length—13,5 mm.

Hab.—Formosa (Koshun).

(211) あかぎほしかめむし

第十四圖(13) (♀)

學名 *Physopelta gutta* Burm.

昆蟲學上ノ地位 星椿象科

體ハ褐色、觸角ハ黑色、第三節ノ基部黃白、末端ハ灰褐、頭ハ黃褐、頭頂ノ一縱條ハ褐色、前胸背ノ周緣ハ淡黃褐、後緣ノ半部ニ點刻多シ、稜狀部暗褐ニシテ天鷲絨様ノ光澤ヲ帶ブ、半翅ハ黃褐、内片ハ褐色、中央ノ一圓紋及ビ末端ハ黑色、膜質部ハ黑色、末端ハ灰白、基部ハ黃褐ニシテ之レニ一黑紋ヲ裝フ、腹背ノ兩側ハ黃赤、口吻、胸下及ビ脚ハ褐色、基節、轉節及ビ腿節ノ下面ハ淡黃褐、

腹面ハ淡黃褐、各節ノ後縁ハ細ク暗褐、體長(♂)(♀)三分五厘—六分、此ハあかぎニ普通ナリ、分布—本州、九州、沖繩、臺灣、支那、印度、

(212) あかほしかめむし

第十四圖 (14) (♀)

學名 *Dysdercus cingulatus* F.

昆蟲學上ノ地位 星椿象科

體ハ朱色、觸角ハ黑色、第一節ノ基部ハ赤色、前胸背ノ前縁ハ黃白、之レニ點刻ヲ粗布ス、其後方ニ一褐紋アリ、稜狀部ハ黒褐、半翅鞘ノ中央ニ黑色ノ一圓紋アリ(稀ニ此紋ヲ缺クモノアリ)、膜質部ハ黑色、外縁ハ細ク灰白、口吻及ビ體下ハ朱色、胸腹各節ノ接合部ハ白色、脚ハ暗褐、基部、轉節及ビ腿節ノ基部ハ赤色、體長四分五厘—五分、此ハ綿ノ害虫ニシテ臺灣ニ普通ナリ、分布—沖繩、臺灣、支那、印度、

(213) しろじゆじかめむし

第十四圖 (15) (♀)

學名 *Dysdercus crucifer* Mats.

昆蟲學上ノ地位 星椿象科

前種ニ酷似スレドモ翅ヲ疊ムトキハX字形ノ黃白紋ヲ有スルヲ以テ容易ニ區別スルコトヲ得ベシ、體ハ朱色、觸角、前胸背前縁ノ一紋、稜狀部、半翅鞘ノ内片、く字形黃白紋ノ内角ニアル一紋、膜質部、口吻、脚、胸面及ビ腹面尾端ノ二節ヲ除キハ暗褐乃至黒褐、觸角ノ基部ハ赤色、前胸背ノ前

縁及ビ胸腹ノ各接合部ハ黄白、體長四分一五分五厘、此ハ沖繩及ビ臺灣地方ニ稀ナラズ、分布一沖繩、臺灣、ミンガボーン、

Dysdercus crucifer n. sp. (Pl. XIV, Fig. 15, ♀)

Closely allied to *D. cingulatus* F., but differ as follows.

Body somewhat larger. When closed the hemelytra it presents a X-shaped yellowish white mark. Head very finely punctured. Pronotum sparser and finer punctured. Corium and a spot at the inner side of the X-shaped mark, membrane, rostrum, legs and body beneath (except last 2 ventral segments) fuscous to black. Thoracal and abdominal segments each at the hind margin yellowish white; anterior margin of the prosternum and all sternali grayish white. Thorn like teeth of the anterior femora black, at the apices yellowish.

Length—♂ ♀ 14—16 mm.

Hab.—Riukiu, Formosa, Singapore; many specimens collected by the author.

(214) えぶりぐんばいむし

學名 *Monanthia conchata* Horv.

昆蟲學上ノ地位 軍配蟲科 (Tingidae)

體ハ暗灰色、頭、觸角、前胸背及ビ脚ハ黄色、第四觸角節ノ末端ハ黄褐、頭頂、觸角ノ前方及ビ複眼ハ黑色、前胸背ノ兩側突起ハ袋狀ヲナシテ甚ダシク膨大シ、小網狀ノ斑紋ノ外、更ニ大ナル暗褐ノ網狀紋アリ、各袋狀隆起ノ後縁ニ橢圓形ノ深キ凹陷アリ、前胸背ノ縦隆ハ黄色、半翅鞘ノ中央ニ近ク二突起ヲ具ヘ、前縁ハ稍ヤ無色透明、二列ノ大胞室ヲ具ヘ、其内側ニハ五列ノ小胞室アリ、末

第十四圖 (16) (♀)

端及ビ後縁ハ暗色、四列ノ胞室アリ、體下及ビ跗節端ハ暗色、體長(♂)一分五厘内外、此ハ札幌地方ニ稀ナラズ、
分布—北海道、本州、

(215) いぐちひらたかめむし

學名 *Aradus iguchii* Mats.

第十四圖 (17) (♀)

昆蟲學上ノ地位 扁椿象科

體ハ黑褐、點刻及ビ小顆粒ヲ密布ス、觸角ハ黑色、第四節ノ末端ニ少シク灰白ノ部分アリ、前胸背兩側ノ突起ハ葉狀ヲナシテ圓ク、黄色ノ小齒ヲ連ヌ、前縁ノ兩側ニ黄色ノ部分アリ、中央ニ於ケル四縱條ハ大形ノ顆粒ヨリ成ル、稜狀部ニ黄褐ノ顆粒多ク、其周圍(前縁ヲ除キ)ハ隆起シ、兩側ノ中央ニ黄色部アリ、半翅鞘前縁ノ基部ニ黄色部アリテ之レヨリ同色ノ四紋ヲ出ス、横脈ノ黄色ヲ呈スルモノアリ、腹部ハ廣ク、各節ノ後縁角ハ突出シ、其後縁ハ黄白、脚ハ黑色、基節、腿節ノ基部、脛節ノ基部、其中央並ニ末端ニ近キ一部ハ黄白、跗節ハ末端ヲ除キ暗黄、體長(♀)三分、此ハ初メ播州ニテ井口宗平氏ノ採集セルモノナリ、
分布—北海道、本州、

Aradus iguchii n. sp. (Pl. XIV, Fig 17, ♀).

Body fuscous, coarsely punctured and granulated. Antennae robust, fast as long as the head and prothorax together, at the extreme apex somewhat grayish white. Pronotum on the sides leaflike produced, at the margin with many yellowish teeth.

near the anterior angles on the sides yellowish white, longitudinal keel strongly granulated. Scutellum fulvous granulated, along the sides and apex ridged, in the middle at the sides yellowish white. Hemelytra at the basis near the costal margin yellowish white, with 3 to 4 same colored spots outwardly, some cross veins yellowish. Membrane in the male somewhat shorter, in the female much shorter than the abdomen, here and there grayish spotted. Abdomen towards the end strongly dilated, the posterior angles of each segment whitish, the last 3 segments on the sides acutely produced. Body beneath and legs fuscous, the former strongly granulated; the coxae, the basis of femora and tibiae, the middle part and a part near the tip of each tibia yellowish white.

Length—♂ ♀ 7—9 mm.

Hab.—Hokkaido, Honshu; many specimens collected by Mr. S. Iguchi and the author.

(216)

あしながさがめ

第十四圖(18)

(♀)

學名 *Emesa mercida* Uhl.

昆蟲學上ノ地位 食蟲棒象科 (Reduviidae)

體ハ淡黃褐、觸角ハ細長ニシテ體ト稍ヤ同長、第二及ビ第三節ノ基部並ニ第四節ハ暗色、頭ノ兩側及ビ頭頂ノ二縱條、胸側及ビ腹側紋ハ暗色、前後ノ兩翅ヲ缺ク、前肢ハ捕獲肢トナリ、基節ハ甚ダシク延長シテ腿節ヨリ少シク短カク、腿節ニハ暗色紋ヲ具ヘ、長短アル銳齒多ク、其內端ニアル一齒ハ著シク長シ、脛節及ビ跗節端ハ暗灰色、中後ノ兩肢ハ細長ニシテ何レモ體ヨリ長ク、特ニ後肢ハ著シク長シ、基節ニ暗色ノ二縱條ヲ具ヘ、腿節ノ末端及ビ脛節ノ基部ニ灰色ト黃色ノ斑ヲナス、跗節ハ暗色、腹背ニ赤色ノ三縱條ヲ具ヘ(中央線ハ後方ニ至リテ暗色トナル)、兩側ニアルモノハ點線

ヨリ成リ、中央線ノ兩側ニ暗色紋ヲ散在ス、體下ハ暗色、黄色ノ小紋ヲ散在ス、腹面ノ中央ニ黄色ノ二縱條アリ、體長(♀)六分、此ハ本州ニ産スレドモ稀ナリ、
分布—本州(岐阜、播州)、

(217) ごみあしながさがめ

學名 *Orthunaga bivittata* Uhl.

昆蟲學上ノ地位 食蟲椿象科

體ハ暗黄褐、黄褐ノ長毛ヲ密生ス、觸角ハ細長ニシテ體ヨリモ遙ニ長ク、第二節ノ末端及ビ第三節ノ基部ハ黄白、後頭ハ延長シテ頸狀ヲ呈シ、前胸背ノ前半モ細長ニシテ其後縁緊縮スルヲ以テ亦頸狀ヲナス、前胸背ノ後半部ハ稍ヤ圓錐形ニ近ク、中央ニ黄色ノ二縱條アリ、翅ハ何レモ膜質ニシテ半透明、翅底脈ハ暗色、前縁ハ赤褐、末端ノ脈ハ暗黄、後翅脈ハ少ナク、同ジク暗色、腹部ハ暗褐、脚ハ黄色ニシテ頗ル長ク、前肢ハ捕獲肢トナリ、基節ハ延長シ、之レニ二個、腿節ニ三個ノ暗色紋アリ、中後兩腿節ノ末端ニ近キ一部及ビ跗節ハ暗色、何レモ長キ黄褐ノ軟毛ヲ密生ス、體長(♀)五分、此ハ京都地方ニテ捕獲スルモノナルガ稀ナルガ如シ、
分布—本州(盛岡、伊賀、岐阜、奈良、京都)、

(218) ごびいろさがめ

學名 *Oncocephalus notatus* Klug.

第十四圖 (20) (♂)

第十四圖 (19) (♀)

昆蟲學上ノ地位 食蟲椿象科

體ハ淡黃褐、第一觸角節ノ内側ニ暗色ノ縱條アリ、頭ノ兩側、頭頂ノ二縱條、後頭ノ隆起セル部分、前胸背ノ中央ニアル一縱條及ビ其兩側ノ細線ハ黑色、前胸背兩側ノ縱條及ビ後縁ハ暗色、稜狀部ハ暗色ニシテ顆粒多ク、中央ハ黃褐、前翅ノ中央ニ天鷲絨様ノ一黑條アリテ翅端ニ達セズ、其末端ハ尖小ナリ、此ハ横脈ニヨリテ遮斷セラル、翅端ハ少シク暗色ヲ帶ブ、口吻末端ノ二節ハ黑色、末端ハ黃褐、體下及ビ脚ハ淡黃褐、前肢ハ捕獲肢トナリ、腿節下ニ銳齒ヲ連テ、黑色ノ二縱條アリ(此黑紋ヲ缺クモノアリ)、同脛節ノ基部、中央及ビ末端ハ暗色、中後兩腿節ノ二縱條、脛節ノ基部及ビ末端ニ近キ一紋ハ黑色、爪ハ褐色、前中兩胸面、後胸面及ビ腹面ノ兩側ハ暗色、體長(♂)四分五厘—五分五厘、此ハ九州地方ニ稀ナラズ、分布—本州、九州、沖繩、臺灣、支那、印度、

(219) ぞげさしがめ

第十四圖 (21) (♂)

學名 *Acanthodesma perarmatum* Uhl.

昆蟲學上ノ地位 食蟲椿象科

體ハ赤褐、黄色ノ銳齒多シ、觸角ハ體ヨリ長ク、五節ヨリ成リ、第四節最モ短カシ、頭ニ黄色ノ銳齒多ク、其内前縁ニアル二個ハ長大ニシテ鬼角様ニ突出ス、後頭ニ黄色ノ三縱條、前胸背ニ同色ノ四縱條アリ、前胸背ニ約十七個ノ銳齒アリテ、其内中央ニアル二個ハ最モ長ク、後縁ニアル四個ハ

之レニ次グ、稜狀部ニ三個ノ銳齒アリテ、後方ニアル一個ハ長シ、前翅ハ短カクシテ尾端ニ達セズ、暗褐ノ脈ハ判然ス、腹側ニ銳齒ヲ列テ、其内五個ハ長大ナリ、尙ホ尾端ニ四長刺ヲ裝フ、中央ニアル二個ハ分枝ス、腹面ニ灰白毛多ク、兩側ニ黑色ノ一縱條アリ、脚ハ淡黃褐ニシテ黄色ノ銳齒多シ、腿節ハ基部ヲ除キ赤褐、脛節及ビ跗節端ハ暗褐、體長(♂)三分—四分、此ハ本州ニ稀ナレドモ、臺灣ニハ稀ナラザルガ如シ、分布—本州(岐阜)、臺灣(臺南)、

(220) くろばしさがめ

第十四圖 (22) (♀)

學名 *Metatarodes maculatus* Mats.

昆蟲學上ノ地位 食蟲椿象科

體ハ暗黄色、灰白ノ短毛ヲ密生ス、觸角ハ黄色ニシテ體ヨリ短カク、第一節ハ黑色ニシテ、基部ハ上面ニテ黃白、第二節ノ基部ハ黃白、其次ギニアル一部分及ビ末端ハ黑色、頭ハ長ク、中央ノ一縱條ハ黑色、單眼ノ前方ニ一横溝アリ、頭ノ兩側及ビ下面ハ暗色、口吻ハ黄色、末端節ハ光澤アル暗褐、前胸背ノ兩側ニ各三個ノ長キ齒狀突起アリテ黑色ヲ呈シ、其末端ハ尖ラズ、前縁ニアルモノハ短カシ、中央ニ黑色ノ一縱條ヲ具ヘ、後縁半部ノ兩側ニ更ニ判然セザル各二條ノ暗色縱條アリ、稜狀部ハ暗色、金色ノ短毛多シ、後縁ニ近ク暗褐ノ一齒狀突起アリテ、其基部ハ赤黃、前翅ハ灰黃白、暗褐ノ三紋アリテ縱列シ、翅底ニアル紋ハ接合線ニヨリテ二分セラル、翅端ノ半部ハ灰色、灰白ノ

網狀紋ヲ密布シ、微小ノ縮刻多シ、體下ハ暗色、腹面ノ兩側ニ各二個ノ赤條ヲ縱走ス、脚ハ黃色、前肢ハ暗色、同腿節基部ノ上面及ビ末端並ニ脛節ノ基部ニ近キ一部ハ黃色、中後兩腿節ノ下面及ビ末端ニ近キ一部ハ暗色、脛節ノ基部ニ近キ二紋並ニ末端ハ黑色、體長(♀)八分五厘、此ハ沖繩八重山ニテ黒岩恒氏ノ採集セル珍種ナリ、分布—沖繩(八重山)。

Metatiarodes maculatus Mats. (Pl. XIV, Fig. 22, ♀).

Body fulvous, covered with very short grayish white hairs. Antennae yellow, somewhat shorter than body, 1st joint black, at the base above pale yellowish, 2nd at the base pale yellowish, the following same length, as well as the apex of the same joint black. Head long, in the middle with a longitudinal black stripe, on the sides fuscous. Rostrum yellow, apical joint pitchy brown, at the extreme apex yellowish brown. Prothoracal spines black and blunt, the anterior pair being shortest, in the middle with a fuscous longitudinal stripe, on the posterior half on each side with 2 grayish longitudinal stripes. Scutellum fuscous, covered with very short golden hairs, near the apex with a blunt brownish spine, at the base reddish yellow. Hemelytra grayish white, each with 3 brownish spots, of which a spot at the base interrupted by the suture-nerve, a spot near the apex largest and of an obconical form; apical half somewhat infuscated and very fine yellowish reticulated.

Body beneath fuscous, venter on each side with 2 longitudinal reddish yellow stripes. Legs pale yellowish, underside and apical part of each femur fuscous; 2 spots near the base and tip of each tibia black; anterior tibiae fuscous marmorated.

Length—♀ 25 mm.

Hab.—Riukiū (Yayeyama), 2 (♂ ♀) specimens collected by Mr. K. Kuroiwa.

(221)

おほくろぼしさがめ

第十四圖 (23) (♂)

學名 *Metatarodes apicalis* Mats.

昆蟲學上ノ地位 食蟲椿象科

體ハ灰黃、觸角ハ體ヨリ長ク暗褐ニシテ黃褐ノ長毛多ク、第二節末端ノ半部ハ黃色、其末端ハ少シク暗褐、第三及ビ第四節ハ黃色ニシテ、第三節ノ兩端ハ暗色、頭頂ノ中央及ビ頭下ハ暗褐、兩側ニ黃色ノ各一縱條アリ、後頭ハ黃色、單眼ノ部分ハ黑褐、前胸背ノ兩側ニアル各三刺ハ前種ヨリモ遙ニ短カク、前二双ハ黃色、後一双ハ暗黃、中央ノ一縱條、後角及ビ後縁ハ暗色、稜狀部ハ暗色、刺狀突起ハ灰黃ニシテ一暗色紋アリ、前翅ハ遙尾端ヨリ突出シ、灰黃褐、翅ノ中央ニ近ク稜形ノ一黑紋ヲ具ヘ、其外側ニ更ニ二個ノ小黑紋ヲ裝フ、翅端ノ半部ニ黃色ノ網目狀ノ紋多シ、口吻及胸面ハ黑褐、口吻ノ末端ハ黃褐、腹面ハ黃褐、接合膜及ビ縱隆起ハ暗色、脚ハ暗褐、腿節ノ末端、脛節及ビ跗節ノ大部ハ黃色、脛節ノ中央ニ近キ一部及ビ同節ノ末端ハ暗褐、體長(♂)九分(翅端迄)、此ハ臺灣函子嶺ニテ捕獲セリ、分布—臺灣、

Metatarodes apicalis n. sp. (Pl. XIV, Fig. 23, ♂).

♂ Testaceous. Antennae fuscous, longer than body, covered with fulvous long hairs, the apical half of the 3rd joint (except the extreme apex, which is fuscous) and apical 2 joints yellowish, the 3rd joint being fuscous at both ends. Head above fuscous brown, on the sides yellowish, occiput yellow, the ocellar region fuscous. Pronotum with 3 pairs of short yellowish

spines, of which the hind pair at the base fuscous; a central stripe, the hind angles and the posterior margin fuscous, the central stripe being narrower towards the apex and not reaching the anterior margin. Scutellum fuscous, a central spine fulvous, with a fuscous spot. Anterior wings much exceeding the abdominal end, fuscous brown, near the middle each with a rhombic fuscous spot and 2 small same colored spots further apart from this spot outwardly; the outer half of the wing indistinctly fulvous reticulated. Head and thorax beneath fuscous, venter yellowish brown, connexivum somewhat infuscated. Legs fuscous, femora at the apices, tibiae (each except the middle and apical part, which is fuscous) and tarsi orange yellow.

Length—♂ 27 mm.

Hab.—Iformosa (Kanshrei), 2 ♂ specimens collected by the author.

Metatarodes (n. g.)

Head subcylindrical, near the apex somewhat compressed, antecular area much longer than postocular, ocelli moderately distant. Antennae inserted near the apex of head, longer than body, 1st joint robust, 2nd $\frac{1}{2}$ longer than 1st, 3rd somewhat longer than 4th, both being very fine and short. Rostum reaching the middle of prosternum, 1st somewhat shorter than 2nd, 3rd somewhat shorter than 1st. Anterior lobe of pronotum at the anterior and near the posterior angle each with a spine, posterior lobe at the hind margin broadly rounded, on each side with an acute spine. Scutellum near the apex with an acute, erect spine. Hemelytra ample and long, membrane with 2 long cells. Prosternum in the middle sulcated, acutely produced posteriorly, metasternum and venter each in the middle carinated. Legs long, posterior legs very long, middle legs shortest, anterior and middle femora nearly as long as the same tibiae, posterior femora distinctly shorter than the same tibiae.

Closely allied to *Tiarodes* Stål.

Type—*Metatarodes maculatus* Mats.

(222) みづゑしがめ

學名 *Ptilocorus immitus* Uhl.

第十五圖 (1) (♀)

昆蟲學上ノ地位 食蟲椿象科

體ハ淡黃褐、同色ノ長毛多シ、觸角ハ施毛狀ニシテ體ノ半ニ達シ、第二節ハ長シ、前胸背ノ中央及ビ兩側ニ凹陥アリ、半翅鞘ノ基部ハ半透明ニシテ之レニ判然セル縦脈ヲ具ヘ、膜質部ハ暗灰色、基部ニ暗色ノ三紋アリテ中央ニアルモノハ少シク小ナリ、長クシテ遙尾端ヲ越ユ、體下及ビ脚ハ淡黃褐、同色ノ長毛多ク、殊ニ脛節ニアルモノハ長シ、體長一分、此ハ水中ニ住スル食蟲椿象ニシテ稀ナリ、

分布—本州岐阜、

(223) はらびろとげさしがめ

第十五圖 (2) (♀)

學名 *Centrocnemis formosana* Mats.

昆蟲學上ノ地位 食蟲椿象科

體ハ暗黃褐、第一觸角節ハ棍棒狀ニシテ短カク、第二節最モ長ク、第三及ビ第四節ハ同長ニシテ細ク、之レニ細毛ヲ裝フ、頭頂ニ四突起ヲ具ヘ、複眼ノ内側ニ各一突起アリ、頸ハ圓柱形ニシテ長シ、前胸背ノ前半ニハ小突起ヲ散在シ、後半ノ兩側ハ甚ダシク突出シ、此縁ニ四齒ヲ具ヘ、中央ニ二縦隆アリテ其後縁ノ終止スル處ニ各一齒アリ、稜狀部ハ小、末端ハ黄色、半翅鞘ハ細ク、脈ハ灰色ニシテ隆起ス、膜質部ニ長キ三胞室ヲ具ヘ、其内前縁ニ近キモノハ小ナリ、腹側ハ甚ダシク突出シ、之レニ多クノ小齒ヲ列ヌ、口吻ハ短大、第一節ノ基部ニ近キ一紋、第二節及ビ第三節(基部ヲ除キ)ハ

黒褐、體ハ暗褐、脚ハ暗黄褐、腿節ノ二紋、脛節ノ中央及ビ末端並ニ跗節端ハ暗褐、體長六分五厘、此ハ臺灣ニ産スレドモ稀ナリ、分布—臺灣(風川澤)。

Centrocnemis formosana n. sp. (Pl. XV, Fig. 2, ♀).

Grayish fulvous, coarsely granulated. Antennae fulvous, reaching the tip of scutellum. Head with 3 pairs of long spines, a posterior pair of which issues from the inner side of each eye. Neck long, coarsely granulated. Pronotum on the anterior half obconical, with many small cone-like projections, a middle pair being largest; posterior half much dilated laterally, at the margins each with 3 or 4 sharp spines; in the middle grooved, sidely each with a longitudinal keel, which at the end provided with a conical projection. Scutellum short, triangular, at the apex fulvous, and with a conical projector. Hemelytra as long as the body, veins of corium grayish white, membrane fuscous, in the middle grayish. Abdomen much dilated, with many teeth-like projections on each margin. Rostrum short, 1st joint fulvous, in the middle fuscous spotted, 2nd and 3rd (except the base) fuscous. Prosternum with one pair of conical projections. Body beneath fuscous, venter on the sides paler. Legs fulvous, anterior and middle femora with many small teeth, posterior femora only at the apices toothed; 2 middle spots of femora, the middle and apical part of each tibia, as well as the tarsal apices fuscous.

Length—21 mm.

Hab.—Formosa (Aitikan), one ♀ specimen collected by the author.

(224)

はねなしがめ

第十五圖(3)(♀)

學名 *Velinoides dilatatus* Mats.

昆蟲學上ノ地位 食蟲椿象科

體ハ暗色、觸角ハ黑色ニシテ體ノ半以上ニ達シ、末端ハ黃褐、口吻ノ末端ハ黃色、前胸背ノ前半ニ瘤狀ノ二隆起アリテ、其中間ニ縱溝ヲ裝フ、後半ハ前半ヨリ少シク廣ク、粗糙ノ縮刻及ビ點刻多シ、稜狀部ハ小ニシテ末端ニ短カキ一突起アリ、前後兩翅ヲ缺ク、腹部ハ廣ク、兩側突出シ、兩縁ハ上向ス、接合膜ノ後縁角ニ各黃褐ノ一紋アリ、體下及ビ脚ハ光澤アル黑色、腿節ニ低キ瘤狀ノ突起多シ、爪ハ黃褐、體長五分五厘、此ハ北海道及ビ本州ニ産スレドモ多カラズ、
分布—北海道、本州、

Velinoides (n. g.)

Closely allied to *Velinus* Stal.

Head long, narrow on the occiput, antecellar region somewhat longer than the postocellar. Ocelli each other nearly equidistant from the eyes. Rostrum curved, 1st joint long, somewhat shorter than 2nd, 3rd only $\frac{1}{2}$ of 2nd. Antennae long, reaching the middle of abdomen, 1st joint somewhat longer than pronotum, 2nd and 3rd short and subequal, 4th as long as the 2nd and 3rd together. Pronotum in the middle constricted, anterior half of the pronotum in the middle with a longitudinal furrow and on the sides nodulated, posterior half coarsely granulated. Scutellum short, at the apex rounded and with a short projection. No trace of both wings. Abdomen much broader than thorax, on the sides highly elevated. Anterior and middle femora indistinctly nodulated.

Type—*Velinoides dilatatus* Mats.

Velinoides dilatatus n. sp. (Pl. XV, Fig. 3, ♂).

Fuscous, with short golden hairs and few long fulvous hairs. Head between the antennae and behind the ocelli somewhat granulated. Antennae brown, 1st joint black, with long fulvous hairs, apical joint at the apex testaceous. Anterior

half of pronotum not granulated, posterior half strongly granulated. Abdomen oblong, broad, on the sides leaf-like elevated, the hind angle of each connexivum-segment yellowish spotted. Rostrum, body beneath and legs coal black, rostrum at the apex testaceous, tibiae at the apices and tarsi fuscous, claws testaceous.

Length—♂ ♀ 17 mm.

Hab.—Hokkaido, Honshu; quite rare.

(225) あかへりさがめ

學名 *Conorhinus rubrofasciatus* Deg.

昆蟲學上ノ地位 食蟲椿象科

體ハ暗褐、觸角ハ短カクシテ漸ク稜狀部ノ末端ニ達ス、第三及ビ第四節ハ黄色ニシテ頗ル細シ、前頭甚ダ長ク、小顆粒ヲ散在ス、後頭ハ短カシ、單眼ハ大キク、口吻ハ黄褐、末端ハ淡黄褐、前胸背ニ二縱隆ヲ具ヘ、顆粒多シ、兩側ハ淡黄褐、稜狀部ニ顆粒多ク、後方ニ突出セル一長齒ヲ裝フ、半翅鞘ノ縱脈及ビ中央ノ一紋ハ淡黄褐、膜質部ハ尾端ニ達セズ、腹部ハ廣ク、接合膜及ビ同各節ノ後緣並ニ後緣角ハ黄色、體下及ビ脚ハ黑褐、腹面ノ中央ハ暗褐、小顆粒ヲ散在ス、脛節ノ兩端及ビ跗節ハ淡黄褐、體長六分五厘、此ハ臺灣臺南地方ニ稀ナラズ、分布—臺灣、支那、印度、亞弗利加、

(226) やへやまさしがめ

學名 *Pirates yayeyamae* Mats.

第十五圖 (5) (♀)

昆蟲學上ノ地位 食蟲椿象科

體ハ暗褐、觸角ハ橙黃色、第三及ビ第四節ハ細ク、少シク褐色ヲ帶ブ、前頭及ビ口吻ハ橙黃色、頭ニハ金色ノ短毛多シ、前胸背ニハ黃褐ノ短毛多ク、前半ハ稍ヤ球形ニ膨起シ、後半ハ稍ヤ長方形ヲナス、稜狀部ノ突起ハ長ク後方ヲ向ク、半翅鞘ハ橙黃色、三縱條、後緣、横脈下ノ一紋及ビ膜質部ハ黑色、腹部ノ兩側及ビ脚ハ橙黃色、前腿節ハ甚ダシク肥大ス、後肢ノ基節ハ末端ヲ除キ暗褐、體長五分六厘、此ハ黒岩恒氏ノ沖繩八重山ニテ捕獲セル珍種ナリ、分布—沖繩(八重山)。

Pirates yayeyamae n. sp. (Pl. XV, Fig. 5, ♀).

Fuscous. Antennae, forehead, rostrum, the sides of abdomen, hemelytra and legs orange yellow. Antennae at the apices somewhat infuscated. Head covered with fine short golden hairs. Pronotum and scutellum covered with very fine short fulvous hairs. Scutellum at the apex with a quite long conical projection. Hemelytra with 3 short longitudinal black stripes, the hind margin in the middle, a quadrate spot on the outer side of the cross vein, as well as the membrane black. Body beneath fuscous, venter being castaneous brown. Posterior coxae except the apices fuscous.

Length—17 mm.

Hab.—Riukiu (Yaye ann Ise), one ♀ specimen collected by Mr. K. Kuroiwa.

(227)

さばしさがめ

學名 *Ectomocoris diguttulus* Stål.

昆蟲學上ノ地位 食蟲椿象科

第十五圖 (6) (♀)

體ハ黑色、前胸背ノ前半ハ光澤ヲ有シ、少シク綠味ヲ帶ブ、觸角ハ褐色、頭ニハ灰白ノ短毛多シ、前胸背ノ前半ハ稍ヤ球形ニ近ク、中央ニ一縱溝ヲ具ヘ、六條ノ光澤ナキ縱條アリ、稜狀部ノ隆起ハ判然ス、半翅鞘ハ暗褐、橢圓形ノ一黃紋ヲ具ヘ、膜質部ハ暗色、其基部ニ小形ノ黃色紋アリ、各接合膜節ノ後緣角ハ黃色、口吻ノ末端及ビ跗節ハ黃褐、脛節及ビ跗節ニハ金色ノ短毛多シ、體長(♀)四分五厘、此ハ臺灣及ビ沖繩ニ稀ナラザルガ如シ、分布—沖繩、臺灣(恒春、臺中)、

(228) ころばあかさしがめ

第十五圖(7) (♂)

學名 *Labidocoris insignis* Dist.

昆蟲學上ノ地位 食蟲椿象科

體ハ朱色、觸角、頭、口吻、前胸背ノ前半、胸下及ビ脚ハ暗黑色、稜狀部、半翅鞘前緣ヲ除キ及ビ膜質部ハ黑色、觸角長ク、體ト畧同長、長毛多シ、前頭ハ淡黃褐、單眼ハ赤色、前胸背ニ深キ一縱溝ヲ具ヘ、後半ノ兩側ニモ各一縱溝アリ、稜狀部ノ中央ハ凹陷シ、末端ニ二刺狀突起アリ、半翅鞘ノ前緣及ビ楔狀部ハ朱色、他ハ黑色、尾端ヨリ少シク短カシ、尾節ノ下面ハ褐色、前腿節ハ少シク肥大シ、其下面ニ一齒ヲ裝フ、跗節ハ淡黃褐、體長(♂)四分、此ハ播州地方ニ産スレドモ稀ナリ、分布—本州、

(229) あかへりるりさしがめ

學名 *Ectrychotes andreae* Thunb.

昆蟲學上ノ地位 食蟲椿象科

體ハ黃黑色、腹部ノ大部ハ朱色、觸角ハ體ノ半以上ニ達シ、第三節ハ二副節、第四節ハ四副節ヨリ成リ、末端ハ細ク、細毛多シ、頭ハ割合ニ小、口吻ハ太シ、前胸背ハ頗ル光澤ヲ帶ビ、點刻ヲ缺キ、中央ニ一縱溝ヲ具ヘ、後半ノ兩側ニ縱條ヲ有スルコト前種ト異ナラズ、稜狀部ノ末端ニ下向セルニ刺狀突起アリ、半翅鞘ハ黒褐、基部ハ黄色、胸面ハ全部黒藍色、腹部ノ兩側ハ雄ニテハ赤色、雌ニテハ黄色、尾端ノ二節、第四及ビ第五節ノ兩側紋並ニ各節ノ接合部ハ黒藍色、脚ハ黒藍色、轉節及ビ腿節ノ基部ハ赤褐、前脛節及ビ腿節ニ暗黄ノ縱條アリ、跗節ハ褐色、爪ハ黃褐、體長(♂)三分五厘—四分、此ハ沖繩及ビ臺灣ニ稀ナラズ、分布—本州、沖繩、臺灣、

(230) いぐちあかさしがめ

學名 *Ectrychotes iguchii* Mats.

昆蟲學上ノ地位 食蟲椿象科

體ハ朱色、觸角、頭及ビ脚ハ暗褐、觸角ハ體ノ半以上ニ達シ、褐毛多ク、第三節ハ二副節、第四節ハ四副節ヨリ成ル、頭、前胸背ノ前半、稜狀部及ビ胸下ハ黒色、觸角ニ長毛ヲ粗生ス、前頭及ビ口

第十五圖 (8) (♂)

第十五圖 (9) (♂)

吻ハ黄褐、前胸背後半ノ三縦溝ハ暗色、稜狀部ノ中央ハ三角形ニ凹陷シ、末端ハ黄褐ニシテ二個ノ刺狀突起アリ、半翅鞘及ビ膜質部ハ暗褐色、半翅鞘ノ前縁及ビ基部ハ朱色、腹面ノ兩側ハ廣ク暗褐、各節ノ後縁及ビ尾節ハ黑色、腿節ノ末端及ビ跗節ハ黄褐、體長(♂)二分六厘、此ハ播州ニテ井口宗平氏ノ採集セル珍種ナリ、
分布—本州、

Ectrychotes iguchii n. sp. (Pl. XV, Fig. 9. ♂).

Crimson red. Antennae, head and legs fuscous brown, anterior lobe of pronotum, the scutellum and pectus black. Anterior part of head and the rostrum testaceous. Antennae with long brown hairs, 3rd joint with 2 and 4th with 4 sub-joints. Rostrum at the tip enlarged and conical-shaped. Longitudinal furrows of pronotum fuscous. Scutellum at the tip brown, with 2 somewhat downwardly curved short spines. Hemelytra with the membrane fuscous brown, the former at the base and the costa crimson red, membrane reaches the abdominal end. Venter on each side with a broad longitudinal black stripe, each segment on its hind margin and the genital segment black. Femora at apices and tarsi testaceous.

Length—♂ 8 mm.

Hab.—Honshu (Harima), one ♂ specimen collected by Mr. S. Iguchi.

(231) ひろうごさしがめ

第十五圖 (10) (♀)

學名 *Ectrychotes haematogaster* Burm.

昆蟲學上ノ地位 食蟲椿象科

體ハ黒藍色、觸角ハ長ク體ノ半以上ニ達シ、第三節ハ二副節、第四節ハ四副節ヨリ成ル、末端ハ黄

褐、細毛多シ、口吻ノ末端ハ黃褐、前胸背ノ前半ニ瘤狀ノ隆起ヲ散在シ、後半ニ横皺多ク、兩側ハ滑澤ニシテ暗褐、稜狀部ノ末端ニアル二刺狀突起ハ下向ス、半翅鞘ハ細ク、暗色、基部ハ黃色、膜質部ハ尾端ニ達セズ、接合膜ハ赤色、第四、第五及ビ第六節ノ後縁ニ黑紋アリ、體下及ビ脚ハ黑藍色、腹面ノ中央ハ紅色、轉節及ビ腿節ノ基部ハ赤色、前脛節及ヒ腿節ノ縱條ハ暗黃、全跗節ハ黃褐、體長(♀)三分八里、此ハ京都地方ニ稀ナラザルガ如シ、
分布—本州、

(232) おきなははらあかさしがめ

第十五圖(11) (♀)

學名 *Ectrychotes okinawensis* Mats.

昆蟲學上ノ地位 食蟲椿象科

體ハ光澤アル黑色、頭頂ニ三縱溝ヲ具ヘ、其内中央ニアルモノハ細シ、前胸背前半ノ中央ニアル凹陷ハ中央ノ横溝ニ達セズ、後半ノ中央ニモ縱溝アリテ之レモ亦後縁ニ達セズ、判然セザル横皺アリ、稜狀部後縁ノ二突起ハ褐色ニシテ少シク下向ス、半翅鞘ハ暗褐、前縁ノ基部ハ黃色、膜質部ハ尾端ニ達セズ、接合膜ハ黃色、腹面ハ紅色、中央ニ三個、兩側ニ五個ノ黑紋アリテ、兩側ニアルモノハ相連續ス、尾端ハ黑色、胸面及ビ脚ハ黑色、跗節ノ基部ハ暗褐、爪ハ黃褐、體長四分五厘、此ハ沖縄及ビ臺灣ニ産スレドモ稀ナルガ如シ、
分布—沖縄、臺灣、

(233) くびぐろあかさしがめ

第十五圖 (18)

學名 *Haematoloeccha nigricollis* Mats.

昆蟲學上ノ地位 食蟲椿象科

體ハ朱色、觸角、頭、前胸背ノ前半、稜狀部、口吻及ビ胸面ハ黑色、觸角ハ體ノ半以上ニ達シ、第三節ハ二副節、第四節ハ四副節ヨリ成ル、細毛多シ、頭ニハ光澤ヲ缺キ、口吻ノ末端ハ黃褐、前胸背ハ光澤ヲ帶ビ、後半ノ三縱溝ハ黑色、稜狀部ハ二突起ハ短カシ、半翅鞘ハ體ヨリ短カク、暗褐、前縁ハ朱色、各接合膜節後縁ハ黑色(尾節ヲ除キ)、腹面ノ兩側ハ黑色ニシテ接合膜ノ黑紋ト相連續ス、生殖節ハ暗褐、脚ハ暗褐、腿節ノ末端、脛節ノ基部及ビ跗節ハ黃褐、體長(♂)二分八厘、此ハ京都ニテ鈴木元次郎氏ノ採集セル珍種ナリ、分布—本州(京都)。

Haematoloeccha nigricollis n. sp. (Pl. XV, Fig. 12, ♂).

Crimson red. Antennae, head, anterior lobe of pronotum, scutellum, rostrum and pectus black. Antennae with longer brownish hairs. Head opaque, ocelli ruby red, rostrum at the apex testaceous. Longitudinal furrows of pronotum punctured and fuscous. Scutellum in the middle with deep longitudinal furrows, at the apex with 2 short, somewhat downwardly curved spines. Hemelytra fuscous, costa and base crimson red. Connexivum—segments each at the hind margin black, venter on each side with a broad longitudinal stripe, which being connected with the connexivum—spots. Legs fuscous brown, femora at the apices, tibiae at the basis and the tarsi testaceous.

Length—♂ 8.5 mm.

Hab. Honshu (Kyoto), one ♂ specimen collected by Mr. M. Suzuki.

(234) しまさしがめ

學名 *Sphedanolestes impressicollis* Stål.

昆蟲學上ノ地位 食蟲椿象科

體ハ光澤アル黑色、觸角ハ暗褐、體長ヨリ長ク、第一節ニ二個ノ黄色部アリ、單眼ノ中間ニ黄色ノ一小紋ヲ具ヘ、單眼ノ距離ハ廣シ、前胸背ノ前半ハ稍ヤ球形、前縁ニ二突起ヲ裝ヒ、中央ハ凹陷ス、後半部ハ遙ニ廣ク、中央ハ廣ク三角形ヲナシテ凹陷ス、稜狀部ノ末端ハ黄褐、半翅鞘ハ暗黄褐、基部ハ少シク淡色、膜質部ノ脈ハ暗褐ニシテ判然ス、腹側ハ黄色、各接合膜節ノ後縁ハ黑色、體下及ビ脚ハ黑色、腹面ニ白紋ヲ散在ス、腿節ニ黄白ノ三紋、脛節ノ基部ニ同色ノ環紋ヲ具ヘ、其内前者ノ基部ニアルモノハ幅廣シ、脛節ノ末端ハ黄褐、體長(♂)四分一四分六厘、此ハ本州ニ稀ナラズ、分布一本州、九州、支那、印度、

(235) なかぐろあかさしがめ

學名 *Harpactor fuscipes* F.

昆蟲學上ノ地位 食蟲椿象科

體ハ赤褐、觸角、口吻、頭、前胸背後半ノ大紋、稜狀部、半翅鞘、胸面及ビ脚ハ黑色、觸角ハ體長ヨリ少シク長ク、末端ハ黄褐、複眼ノ中間ニアル一紋及ビ複眼ノ後方ニアル各一紋ハ赤褐、前胸背

第十五圖 (14) (♂)

第十五圖 (13) (♂)

前半ノ前縁ハ黃白、其後方ニ於ケル凹陷部ノ丁字形紋及ビ後縁ハ黑色、後半ハ黑色、兩側及ビ後縁ハ赤褐、稜狀部ノ末端ハ下向シ、赤褐、半翅鞘ノ前縁及ビ膜質部ノ界線並ニ腹側ハ赤褐、膜質部ハ尾端ヨリ遙ニ突出ス、腹面ハ淡黃褐、各節ノ前縁並ニ尾節ノ中央ハ黑色、脚基節及ビ轉節ノ大部ハ赤褐、體長(♂)五分五厘、此ハ臺灣ニ稀ナラズ、
分布—臺灣、

(236) あかへりさしがめ

學名 *Harpactor ornatus* Uhl.

昆蟲學上ノ地位 食蟲椿象科

第十五圖 (15) (♀)

體ハ黑色、各單眼前方ノ一紋、單眼間ノ三角紋、咽喉ノ一縱條、前胸片、脚基節及ビ轉節ノ各一紋ハ黃色、前胸背ノ周圍(中央ノ緊縊部ヲ除キ)及ビ腹側ハ紅色、半翅鞘ハ少シク尾端ヲ越ユ、膜質部ニ小波狀ノ斜皺多シ、第一口吻節ノ末端ハ少シク黃褐、體長(♂)四分—五分、此ハ本州ニ稀ナラズ、
分布—本州、九州、

(237) せうすさしがめ

學名 *Harpactor flavinotum* Mats.

昆蟲學上ノ地位 食蟲椿象科

第十五圖 (16) (♀)

體ハ黑色、觸角ノ末端ハ暗褐、單眼間ノ一點、頭下、咽喉、前胸背前半ノ兩側、前胸背ノ後半、胸

側紋、腹部ノ兩側及ビ腹面ノ大部ハ黃白、前胸背前半ノ中央ニ一縱溝ヲ具ヘ、後半ニハ微小ノ褐色點刻ヲ密布ス、稜狀部ハ頗ル光澤ヲ帶ビ、レ字形ノ隆起ハ高シ、半翅鞘ハ暗褐、膜質部半透明ニシテ暗灰色ヲ帶ビ、遙尾端ヨリ突出ス、腹側ハ黃白ニシテ第四及ビ第五節ニ黑紋アリ、第三乃至第六腹面節ノ兩側ニ暗褐ノ橫條ヲ具ヘ、後方ニ至ルニ從ヒ次第ニ増大ス、脚ハ黑褐、前中兩腿節ハ末端ヲ除キ暗黃褐、尤モ其内ニ二三ノ判然セザル暗褐紋アリ、基節ニ黃褐ノ一紋ヲ裝フ、體長四分、此ハ臺灣魚池地方ニ稀ナラス、
分布—臺灣、

Harpactor flavinotum n. sp. (Pl. XV, Fig. 16, ♀).

Black. Antennae somewhat shorter than body, at the apices fuscous. A small longitudinal spot between the ocelli, head beneath, stethii, posterior lobe of pronotum, side spots of pleurae, connexivum, as well as venter pale yellowish. Anterior lobe of pronotum in the middle longitudinally grooved, posterior half scattered with very minute brownish punctures. Scutellum glabrous, v-shaped ridge very distinct. Hemelytra fuscous, membrane subhyaline, suffused with fuscous, much exceeding the end of abdomen. The 4th and 5th connexivum-segment in the middle black, the 3rd-6th ventral segments on each side with a long transversal fuscous band, which becoming larger towards the end. Legs fuscous, anterior and middle femora except the apices fulvous, the fulvous part being provided with 2 or 3 fuscous patches; coxae each with a fulvous spot. Length—12 mm.

Hab.—Formosa (Shinsha, Gyochi), 4 specimens collected by the author.

(238)

やにちしがめ

學名 *Velinus nodipes* Uhl.

第十五圖 (17)

(♀)

昆蟲學上ノ地位 食蟲椿象科

體ハ黑色、觸角ハ體ノ半以上ニ達シ、第一節ハ長ク、稍ヤ同距離ニ二個ノ黄色部アリテ同節ヲ三等分ス、咽喉ハ黄色、前胸背ノ前縁兩側及ビ中央ノ兩側ハ齒狀ヲナシテ突出ス、半翅鞘ハ黑褐、膜質部ハ半透明、暗色ヲ帶ブ、腹側ハ甚ダシク隆起シ、波狀ヲナシテ凹凸ス、體下及ビ脚ハ黑色、腿節及ビ脛節ニ瘤狀ノ隆起多シ、殊ニ腿節ニアルモノハ大ニシテ其中間ニ黄紋アリ、體長(♂)四分五厘内外、此ハ本州ニ稀ナラズ、幼蟲ハ脂様ノ粘液ヲ滲出シ、塵芥ヲ附着シテ外患ヲ免ルモノ、如シ、分布—本州、九州、

(239) おほこびさしがめ

學名 *Isyndus obscurus* Stål.

第十五圖 (18) (♀)

昆蟲學上ノ地位 食蟲椿象科

體ハ褐色、黄褐ノ短毛多シ、觸角ハ體ト同長、第二節ノ基部、第三節ノ兩端及ビ第四節ノ末端ハ黄色、頭項ハ黑色、前胸背前半ノ兩側ニ一齒狀突起アリ、後半ハ稍ヤ五角形ヲ呈シ、後縁ノ兩側ニ低キ一突起アリ、稜狀部ハ暗褐、半翅鞘ハ褐色、膜質部ハ少シク暗色ヲ帶ビ、少シク尾端ヲ越ユ、腹側ハ甚ダシク隆起シ、各接合膜節ノ後縁ハ細ク黄色、口吻及ビ體下ハ黄褐、腹面ノ兩側ニ暗褐ノ一縱條アリ、脚ハ褐色、前中兩腿節ニ低キ凹凸アリ、體長八分、此ハ本州ニ産スレドモ餘リ多カラズ、分布—本州、

(240) あかさしがめ

第十五圖 (19) (♀)

學名 *Cydnocoris russatus* Stål.

昆蟲學上ノ地位 食蟲椿象科

體ハ朱色、觸角、腹面及ビ脚ハ黑色、觸角ハ體ヨリ少シク短カク、第三節ハ暗褐、第四節ハ黃褐ニシテ何レモ灰白ノ短毛ヲ密生ス、各觸角ノ後方ニ前方ニ向ケル一齒アリテ、其末端ハ黑色、口吻ノ第二及ビ第三節ハ基部ヲ除キ黒褐、前胸背前半ノ中央及ビ兩側ハ凹陷シ、後半ノ兩側ハ突出ス、稜狀部ニアル人字形ノ隆起ハ太シ、半翅鞘ハ朱色、膜質部ハ半透明ニシテ暗色ヲ帶ブ、胸側及ビ胸片ハ黑色、脚基節及ビ其外側ニアル小片ハ朱色、各接合膜節ニアル横帶ハ黑色、轉節ノ末端及ビ爪ハ黃褐、體長(♂)六分内外(翅端迄)、此ハ九州及ビ臺灣ニ稀ナラズ、分布—本州、九州、臺灣、支那、比利賓、

(241) くろひげながさしがめ

第十五圖 (20) (♀)

學名 *Endochus marginalis* Mats.

昆蟲學上ノ地位 食蟲椿象科

體ハ黑色、觸角ハ暗褐、第一節ハ兩端ヲ除キ黃褐、體ヨリ遙ニ長シ、頭、前胸背ノ前半、後半ノ兩側、稜狀部及ビ脚基節ハ赤色、前胸背ノ兩側ニアル棘狀突起ハ銳尖ニシテ細ク、黑色、半翅鞘ハ黑色、前縁ハ赤黃、膜質部ハ半透明、少シク暗色ヲ帶ブ、口吻黃色、胸片ハ赤黃、腹面ハ暗褐、中央

及ビ兩側ハ淡黃褐、脚ハ黃色、腿節ノ二縱條ハ黑色、腿節ノ末端及ビ脛節ノ基部ハ赤黃、脛節及ビ腿節ノ基部ニ近ク各暗色紋ヲ裝フ、尙跗節ノ末端ハ暗色、體長(♂)四分五厘、此ハ沖繩ニ稀ナラザルガ如シ、
分布—沖繩、

(242) べにさしがめ

第十五圖 (21) (♀)

學名 *Euagoroides coccineus* Mats.

昆蟲學上ノ地位 食蟲椿象科

體ハ光澤アル紅色、頭及ビ脚ハ光澤アル黑色、觸角ハ稍ヤ體ト同長、暗褐、第一節ノ基部ハ黑色、口吻ハ暗褐ニシテ太ク、第二節最モ長ク、末端ハ赤褐、頸ノ後方ハ赤黃、前胸背ニ突起ヲ缺キ、兩側ハ鈍角ヲナシテ突出ス、翅鞘ハ紅色、膜質部ハ黒藍色、末端ハ半透明、少シク褐色ヲ帶ブ、體下及ビ脚基節ハ紅色、腿節ニ低キ瘤狀ノ突起多シ、脛節及ビ跗節ハ暗褐、同色ノ長毛ヲ粗生ス、體長二分五厘、此ハ臺灣臺南地方ニ稀ナラズ、甘蔗害虫ヲ捕食シ有益ナリ、
分布—臺灣、

Euagoroides (n. g.)

Closely allied to *Euagoras* Burm., but differs as follows :

Antennae on the anterior part of head, somewhat shorter than body, behind the antennae without tuberculation ; first joint of antennae as long as the head, pronotum and scutellum together, 2nd short and only $\frac{1}{2}$ of the 3rd, 4th somewhat longer

than 3rd. Head broader towards the apex, nearly triangular, ocelli just in the middle of the head, much elevated. Rostrum robust, 2nd joint somewhat longer than 1st, 3rd very short, broadest at the apex of the 2nd. Pronotum glabrous, impunctured, anterior lobe in the middle roundly excavated, posterior lobe on the sides distinctly grooved, humeral projections moderate and obtuse, at the hind margin each side with a short projection. The basal part of scutellum somewhat covered by the hind margin of pronotum. Hemelytra distinctly longer than abdomen, membrane with a broad, twice biforked longitudinal vein and numerous minute longitudinal veinlets. Legs slender and long, femora like *Velinus Sial* nodulated.

Type—*Euagoroides coccineus* Mats.

Euagoroides coccineus n. sp. (Pl. XV, Fig. 21, ♀).

Body carmine red, shining. Head and legs shining black. Antennae fuscous, at the basis black. Rostrum pitchy brown, at the apex reddish brown. Posterior part of the neck reddish yellow. Hemelytra carmine red, membrane dark indigo blue, at the apex subhyaline, somewhat suffused with brown. Body beneath and coxae carmine red. Femora with many low tubercles, tibiae and tarsi fuscous, with few erect fuscous hairs.

Length—7.5 mm.

Hab.—Formosa (Tainan), 3 specimens collected by Mr. M. Ishida and the author.

(243)

こばねまおほしがめ

第十五圖(22) (♀)

學名 *Nabis (Reduviolus) apicalis* Mats.

昆蟲學上ノ地位 食蟲椿象科

體ハ淡黄、觸角ハ體ヨリモ長ク、觸角粘ノ外側ハ暗褐、第二節ノ末端、第三及ビ第四節ハ淡黄褐、口吻ハ四節ヨリ成リ、第一節基部ノ兩側ニ暗褐紋アリ、頭下、後頭ノ兩側、中央ノ一縦條及ビ前胸

背前後ノ兩縁ニアル一縦條、並ニ中央ニアル細キ三縦條ハ暗褐、但シ複眼ノ後方ニアル紋ハ灰色ヲ帶ブ、稜狀部ノ中央ニアル三角紋ハ暗色、兩側ニ黄色ノ二紋アリ、半翅鞘ハ短カク、漸ク第一腹節ノ末端ニ達スルニ過ギズ、中央ニ判然セザル褐色ノ一紋ヲ具ヘ、膜質部ハ暗色、腹部ハ灰色、兩側ハ黄白ニシテ廣ク突出シ、光澤アル黄色ノ短毛多シ、中央ニ暗色ノ三縦條ヲ具ヘ、中央ニアルモノハ短カク、且ツ判然ス、第三乃至第七接合膜節ノ前角ニ暗色紋アリテ、第六及ビ第七節ニアルモノハ大ニシテ帶狀ヲナス、第七節帶ノ前方ニ各一個ノ紅色紋アリ、腹面ハ暗色、基部及ビ末端ハ黄白、末端ニ紅色ノ小紋ヲ具ヘ、胸側ニ暗色紋ヲ裝フ、脚ハ黄白、前腿節ノ基部ニ暗色紋アリ、前腿節ニ暗色小紋及ビ横條ヲ散在ス、中後兩腿節ニ暗色紋アレドモ少ナシ、後腿節ノ末端ハ暗褐、中後兩腿節ノ末端及ビ跗節端ハ褐色、體長二分、此ハ長野ニテ採集セル珍種ナリ、分布—本州(長野)。

Nabis (Reduviolus) apicalis n. sp. (Pl. XV, Fig. 22, ♀).

Body pale yellow. Antennae some what longer than body, antenniferous process on the outer side fuscous, 2nd joint on the apex, as well as 3rd and 4th fulvous. Rostrum at the base each side with a fuscous spot. Head beneath, a middle stripe of occiput, a middle stripe at the anterior and posterior margin of pronotum, 3 narrow stripes in the middle of the same fuscous. A spot behind the eye grayish. Scutellum in the middle fuscous, near the apex each side with a small pale yellowish spot. Hemelytra very short, only reaching the end of first abdominal segment, in the middle with an indistinct brownish spot, membrane narrow, fuscous. Abdomen grayish yellow, covered with short velvety fulvous hairs, with 3 indistinct longitudinal stripes, of which the middle one being distinct and shorter; connexivum much dilated, 3rd-7th segments each in the anterior angle with a fuscous spot, that of the 6th and 7th being much larger and becoming a band, before the band of the 7th segment with

a reddish spot. Pectus on the sides fuscous spotted. Venter fuscous, at the base and apex pale yellowish, the latter on the sides with a small reddish spot. Legs pale yellowish, anterior coxae at the basis fuscous, anterior femora scattered with fuscous spots and short streaks, middle and posterior femora with few fuscous spots, posterior femora at the apices fuscous, middle and posterior tibiae at the apices and all tarsal apices brownish.

Length—6 mm.

Hab.—Honsiu (Nagano), one ♀ specimen in my collection.

(244)

からふつちまおばさしがめ

第十五圖 (23)

(♀)

學名 *Nabis (Reduviolus) flavomarginatus* Scholz.

昆蟲學上ノ地位 食蟲椿象科

體ハ灰黃、頭下及ビ胸面ハ黃白、口吻ノ上面ニ暗褐ノ縱條アリ、頭頂ノ一縱條、複眼ノ後方紋、前胸背ノ三縱條(中央ニアルモノハ後縁ニ達ス)、稜狀部ノ中央及ビ兩側紋等ハ黑色、半翅鞘ハ漸ク腹半ニ達シ、縦脈ノ兩側ハ暗色、膜質部ハ灰白、腹部ハ暗褐、兩側及ビ中央ノ縱條(繼續ス)ハ黃褐、胸面ハ黃白、胸側ニ暗褐紋ヲ裝フ、腹面ハ黃色、中央ノ細キ一縱條及ビ兩側ノ太キ縱條ハ暗褐、脚ハ黃色、前中兩腿節ニハ暗褐紋及ビ同色ノ短線ヲ散在ス、後腿節ニハ二列ノ暗褐紋アリ、體長(♂)二分五厘—三分五厘、此ハ樺太ニ稀ナラズ、分布—樺太、西比利亞、歐洲、

(245) すゞきまきばさしがめ

第十五圖 (24) (♀)

學名 *Gorpis suzukii* Mats.

昆蟲學上ノ地位 食蟲椿象科

體ハ赤褐、觸角ハ細長ニシテ體ヨリ長ク、黄色ニシテ第二節ノ末端ハ暗褐、前胸背ハ三部ニ分レ、前縁ハ細ク縊レ、中央部ハ圓ク、中央ニ一縦溝アリ、後部ニハ粗糙ノ點刻多ク、後縁ハ少シク刳ラ、稜狀部ハ赤黄、半翅鞘ハ赤褐、前縁ノ中央及ビ末端ニ細キ暗褐ノ部分アリ、膜質部ハ少シク尾端ヲ越ヘ、基部ハ赤褐、末端ハ半透明ニシテ少シク黄色ヲ帶ブ、腹側ハ少シク突出ス、口吻、頭下、胸下及ビ脚ハ黄色、中後ノ兩胸側及ビ胸片ニ暗色紋アリ、腹面ハ赤褐、基部ニ暗褐ノ縦條アリ、前腿節ハ赤褐ニシテ太ク、下面ニ暗褐ノ小齒ヲ列ヌ、中央ニ近ク褐色ノ判然セザルニ紋アリ、中後兩腿節ノ末端ニ近ク褐色ノ一紋アリ、體長二分七厘、此ハ京都ニテ鈴木元治郎氏ノ採集セルモノナリ、分布—本州(京都)。

Gorpis suzukii n. sp. (Pl. XV, Fig. 24, ♀).

Reddish brown. Antennae yellow, much longer than body, 2nd joint at the apex fuscous. Middle part of pronotum somewhat globular, in the middle with a narrow longitudinal furrow, posterior part coarsely punctured. Scutellum reddish yellow. Hemelytra reddish brown, the middle and apical part of costa narrowly fuscous, membrane somewhat exceeding the abdominal end, at the base reddish brown, at the apical half subhyaline, with a slight fulvous tinge. Abdomen on the sides slightly dilated. Rostrum, head beneath, venter and legs yellowish, meso- and metapleurae each with a fuscous spot, meso- and metasternum fuscous spotted. Venter near the base with a broad central fuscous stripe.

Length—8—8.5 mm.

Hab.—Honshu (Kyoto), 2 ♀ specimens collected by Mr. M. Suzuki.

(246) まだらめくらがめ

學名 *Lygus saundersi* Reut.

昆蟲學上ノ地位 盲椿象科 (Carpidae)

第十五圖 (25) (♀)

體ハ暗褐、第一觸角節ハ黃色ニシテ、其外側ニ暗色ノ一縱條アリ、頭ノ兩側ニ黃紋ヲ列ネ、前胸背ニ粗大ノ點刻多シ、前胸背前縁ノ二紋及ビ後縁ハ黃褐、中央ノ一縱線ハ黃色、此線ハ稜狀部ノ末端ニ延長シ、末端ニテ黃白紋トナル、半翅鞘ニ灰白ノ短毛多ク、黃褐ニシテ前縁ノ中央紋及ビ末端ハ暗褐、楔狀部ハ黃白、其三角端ハ何レモ黑色、膜質部ハ暗色、灰白紋アリ、脚ハ黃色、腿節ニ暗褐紋多シ、尙脛節ノ基部紋、末端紋及ビ跗節端ハ暗褐、體長(♂)一分五厘、此ハ本邦何レノ地ニモ普通ナリ、撒形科及ビ菊科植物ノ花上ニ捕獲シ得ベシ、分布—北海道、本州、西比利亞、

(247) あかすぢめくらがめ

學名 *Calocoris rubrovittata* Mats.

昆蟲學上ノ地位 盲椿象科

體ハ黃色、少シク綠色ヲ帶ブ、黃白ノ短毛多シ、觸角ハ赤褐、末端ハ少シク淡色、前頭ニ赤黃ノ二

第十五圖 (26) (♀)

紋ヲ具フ、前胸背ニ赤褐ノ二縦條アリテ、之レハ後縁ニテ廣マル、前胸背ノ後縁及ビ稜狀部ノ基部ハ淡赤褐、稜狀部ニ接セル半翅鞘内片ノ一部及ビ接合部ハ赤褐、膜質部ハ半透明、少シク暗灰色ヲ帯ビ、脈ハ赤褐、體下ハ黃白、脚ハ赤褐、後腿節ハ太ク、基節、轉節、腿節基部及ビ中後兩脛節(兩端ヲ除キ)ハ黃白、跗節端ハ暗褐、體長(♀)一分六厘、此ハ京都ニテ鈴木元治郎氏ノ採集セシモノナリ、分布—本州(京都)。

Calocoris rubrovittata n. sp. (Pl. XV, Fig. 26, ♀).

Pale yellow, with a slight greenish tinge, covered with minute pale yellowish hairs. Antennae much longer than body, reddish brown, at the apices paler. Frons with 2 longitudinal, oblong, red yellowish spots. Pronotum minutely punctured, with 2, towards the base diverging reddish brown stripes, which becoming broader at the base; pronotum at the hind margin and scutellum at the base reddish yellow. Clavus along the scutellum and the suture reddish brown; membrane subhyaline, fuscous suffused, veins reddish. Body beneath pale yellowish. Legs reddish brown, coxae, trochanter, the basal parts of the femora, as well as the middle and posterior tibiae except both ends pale yellowish, tarsi at the apices fuscous.

Length—♀ 5 mm.

Hab.—Honsu (Kyoto), a ♀ specimen collected by Mr. M. Suzuki.

(248) あかすぢひげぶらめくらめ

第十五圖 (27) (♀)

學名 *Atractotomus robrolineatus* Mats.

昆蟲學上ノ地位 盲椿象科

體ハ黑色、觸角砧、複眼ノ内側及ビ後縁ハ淡黃褐、前胸背ノ兩側、前縁ニ達セザル三縦條、外線ノ

外側ニアル一紋、稜狀部ノ兩側、半翅鞘ノ前縁及ビ接合部ニ沿ヘル一縦條並ニ膜質部ノ脈ハ赤色、觸角ハ體ノ半以上ニ達シ、第一及ビ第二節太ク、第三及ビ第四節ハ細小ナリ、頭及ビ前胸背ノ前縁ニ點刻ヲ缺ク、前胸背ノ大部ニ粗大ノ點刻ヲ具ヘ、稜狀部ニ横皺多ク、點刻ハ少ナシト雖ドモ大ナリ、半翅鞘ニ點刻多ク、前縁ニハ褐色ノ短毛ヲ裝フ、前縁及ビ楔狀部ノ中央ニ各暗色ノ一紋ヲ具ヘ、膜質部ハ暗色ニシテ遙尾端ヲ越ユ、體下及ビ脚ハ黑色、中後兩基節孔ノ外側ハ黃白、腹側、斷續セルニ縦條及ビ尾端ハ赤色、基節紋ハ赤褐、轉節ノ末端、腿節ノ中央紋及ビ同末端、脛節ノ基部紋及ビ中央部ハ黃白、跗節ハ淡黃褐、末端ハ暗褐、體長(♀)一分六厘、此ハ播州地方ニ産スレドモ餘リ多カラズ、

分布—本州、

Atractotomus rubrolineatus n. sp. (Pl. XV, Fig. 27, ♀).

Black. Antenniferous process, the inner sides of eyes and the posterior part of head testaceous. Pronotum on the sides 3 longitudinal stripes (not reaching the anterior margin) and a spot on the outer side of the external stripe, both sides of scutellum, costal region of hemelytra, as well as the veins of membrane red. Antennae somewhat shorter than body, 1st and 2nd robust, 2nd clavate, with many fuscous short hairs, 3rd and 4th very short and narrow. Head and the anterior part of pronotum glabrous, the remaining part of pronotum strongly punctured. Scutellum transversely wrinkled, sparsely punctured. Hemelytra strongly punctured, a spot in the middle of costa and cuneus fuscous, on the costal part with short brownish hairs, membrane fuscous. Body beneath and legs black, middle and posterior acetabulum each on the outer margin pale yellowish. Connexivum, 2 longitudinal interrupted stripes of the venter and the pygidium red. Coxae with 2 reddish brown spots, trochanter at the apices, femora in the middle and at the apices, tibiae in the middle and at the basis pale yellowish, tarsi and

claws testaceous, the former at the apices fuscous.

Length—10 mm.

Hab.—Honsu (Harima), 2 specimens collected by the author.

(249) あをくちぶこがめ

第十五圖 (28) (♀)

學名 *Dinorhynchus dybowskyi* Jak.

昆蟲學上ノ地位 椿象科

體ハ金綠色、體下及ビ脚ハ灰黃、粗大ノ點刻多シ、觸角ハ暗褐、第一節ノ基部ハ黃褐、同節ノ末端ハ細ク黃白、第二及ビ三節ノ接合部ハ黃褐、頭ノ周緣、外片 (Ergium) ノ内緣、前胸背ノ周緣及ビ角狀突起ハ灰黃、半翅鞘ニ於ケル點刻ハ小ナリ、膜質部ハ半透明ニシテ灰黃色ヲ帶ビ、遙尾端ヨリ突出ス、接合膜ハ黃色、各節ノ前後兩緣ハ黑藍色、口吻ハ灰黃ニシテ太ク、第三節最モ太シ、第四節ハ褐色、氣門點ハ黑色、脛節内側ノ中央ニ一銳齒アリ、體長 (♂) 七分—七分五厘、此ハ東京中野地方ニ稀ナラズ、

分布—本州、西比利亞、

(250) うすくろくちぶこがめ

第十五圖 (29) (♀)

學名 *Tropicoris rufipes* L.

昆蟲學上ノ地位 椿象科

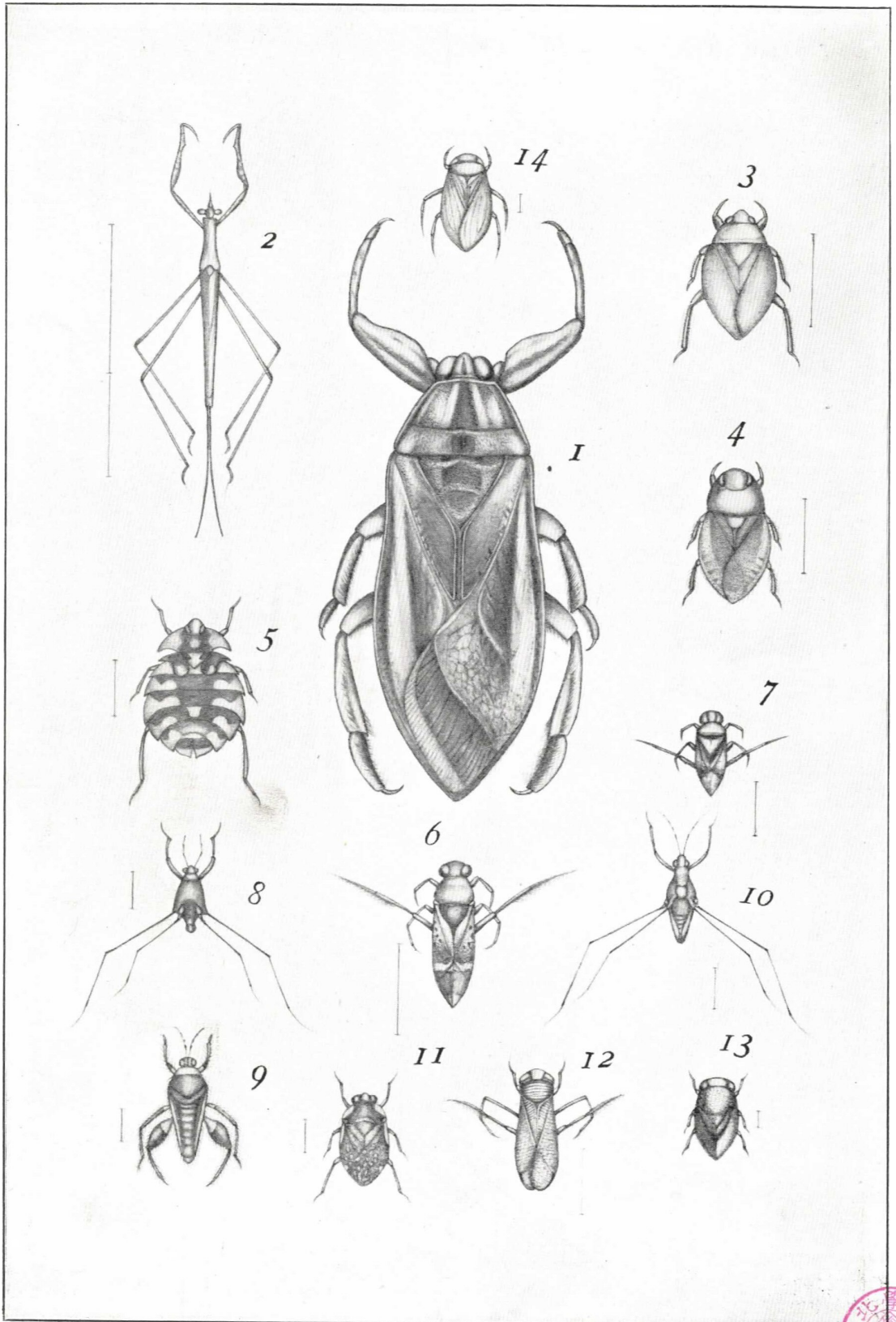
體ハ暗褐、少シク青銅色ヲ帶ブ、點刻多シ、觸角、口吻、體下及ビ脚ハ灰黃、第二觸角節ニ暗褐紋ヲ散在シ、第三及ビ第四節ハ基部ヲ除キ暗褐、前胸背ノ前緣ニ黃白紋ヲ散在シ、角狀突起ハ末端ニテ斜ニ截斷セラレタルノ觀ヲ呈シ、其前緣ニハ小齒ヲ列ス、稜狀部ニ橫皺多ク、末端ハ黃白、半翅鞘ニ灰黃紋ヲ散在ス、膜質部ハ半透明ニシテ少シク灰褐色ヲ帶ビ、遙尾端ヨリ突出ス、腹部ノ接合膜ハ黃色、前後ノ兩緣ハ黑藍色、臭腺孔ノ部分ハ淡紅色、胸面ニ黑色ノ點刻ヲ密布シ、腿節ニハ黑點ヲ散在ス、腹面ノ點刻ハ小ニシテ胸部ヨリ粗ナリ、口吻ノ末端ハ暗褐、體長(♂)四分五厘—五分、此ハ札幌地方ニ稀ナラズ、

分布—北海道、本州、西比利亞、歐洲、

新日本千蟲圖解卷之壹終

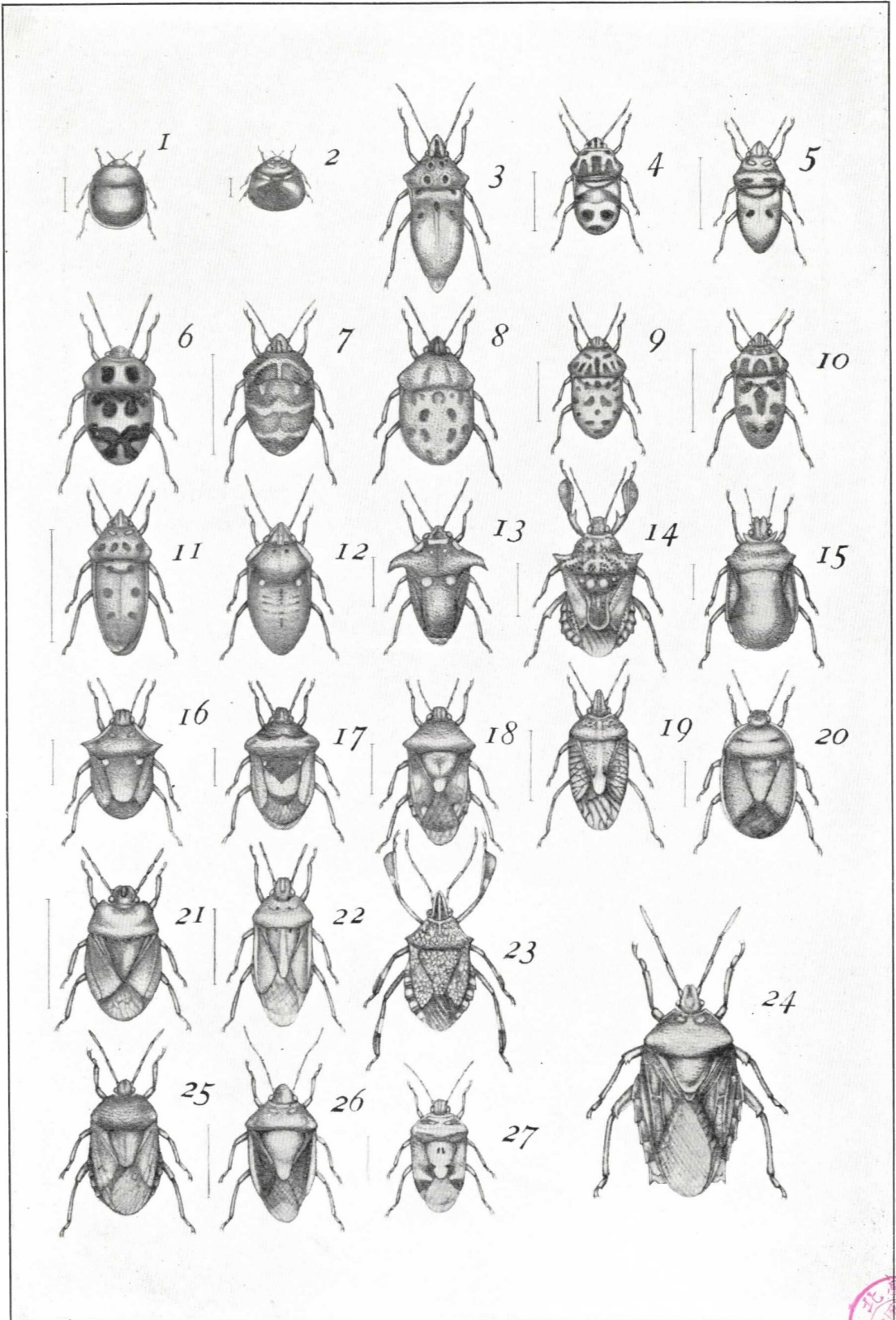
第十一圖 (PLATE XI.)

		PAGE.
1. <i>Belostoma indicum</i> Lep. et Serv.	たいわんたがめ ♂	92
2. <i>Ranatra maculipes</i> Mats.	まだらあしみづかまきり ♀	93
3. <i>Sphaerodema rusticum</i> L.	をきなほこおひむし ♀	94
4. <i>Naucoris exclamationis</i> Scott.	こばんむし ♂	95
5. <i>Aphelocheirus nawae</i> Mats.	とげなべぶたむし ♀	95
6. <i>Notonecta bivittata</i> Mats.	をきなほまつもむし ♀	96
7. <i>Enithares formosanus</i> Mats.	たいわんまつもむし ♀	96
8. <i>Halobates sericius</i> Esch.	うみあめんぼ ♀	97
9. <i>Kotovelis kawakamii</i> Mats.	かたびろあめんぼ ♂	98
10. <i>Neogerris bonninensis</i> Mats.	をがさほらあめんぼ ♀	99
11. <i>Pelogonus flavomarginatus</i> Scott.	めみづむし ♀	100
12. <i>Corixa distantis</i> Kirk.	みづむし ♀	101
13. <i>Plea japonica</i> Horv.	まるみづむし ♀	101
14. <i>Micronecta sedula</i> Horv.	ちびみづむし ♀	102



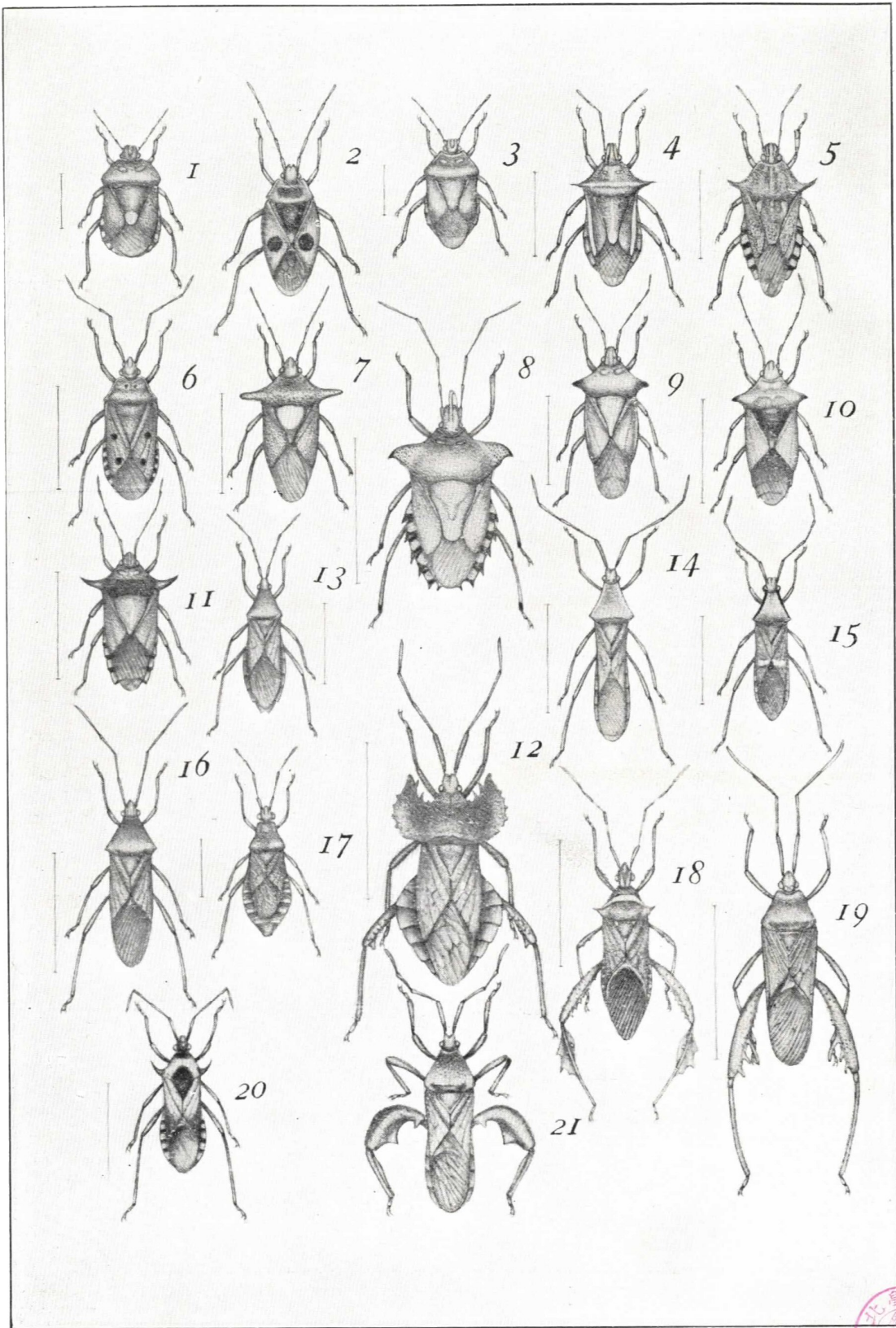
第十二圖 (PLATE XII.)

		PAGE.
1. <i>Brachyplatys cognata</i> Walk.	つやまるかめむし ♀	102
2. <i>Coptosoma japonicum</i> Mats.	きぼしひめまるかめむし ♀	103
3. <i>Cantao ocellatus</i> Thunb.	あかぎかめむし ♀	104
4. <i>Lamprocoris giranensis</i> Mats.	ぎらんきんかめむし ♀	105
5. <i>Lamprocoris myakoensis</i> Mats.	みやこきんかめむし ♀	106
6. <i>Poecilocoris watanabei</i> Mats.	わたなべきんかめむし ♀	106
7. <i>Poecilocoris lewisi</i> Dist.	あかすぢきんかめむし ♀	107
8. <i>Poecilocoris 15-guttatus</i> Mats.	あをぼしきんかめむし ♀	108
9. <i>Chrysophara formosana</i> Mats.	たいわんきんかめむし ♀	109
10. <i>Chrysophara stollii</i> Wolf.	るりぼしきんかめむし ♀	110
11. <i>Chrysophara excellens</i> Burm.	ななほしきんかめむし ♀	111
12. <i>Epicoleotichus borealis</i> Dist.	ほしむらさきかめむし ♀	111
13. <i>Alcimus borealis</i> Dist.	うしかめむし ♀	112
14. <i>Cazira ulcerata</i> H. S.	ふたこぶかめむし ♀	112
15. <i>Podops tarsalis</i> Voll.	ひめくろかめむし ♀	113
16. <i>Eysarcoris lewisi</i> Dist.	れうすしらほしかめむし ♀	114
17. <i>Eysarcoris melanocephalus</i> F.	くろづまるかめむし ♀	114
18. <i>Starioides iwasaki</i> Mats.	いはさきかめむし ♀	115
19. <i>Agonoscelis nubila</i> F.	あやなみかめむし ♀	116
20. <i>Sehirus niveimarginatus</i> Scott.	しろへりがいた ♀	117
21. <i>Adrisa magna</i> Uhl.	よこづながいた ♀	117
22. <i>Aenaria lewisi</i> Scott.	いねかめむし ♂	118
23. <i>Erthesima fullo</i> Thunb.	きまだらかめむし ♂	118
24. <i>Eurostus validus</i> Dall.	たいわんおほかめむし ♀	119
25. <i>Aspongopus chinensis</i> Dall.	つまきくろかめむし ♀	120
26. <i>Plautia stali</i> Scott.	はねあかあをかめむし ♀	120
27. <i>Menida histrio</i> F.	あかかめむし ♀	121



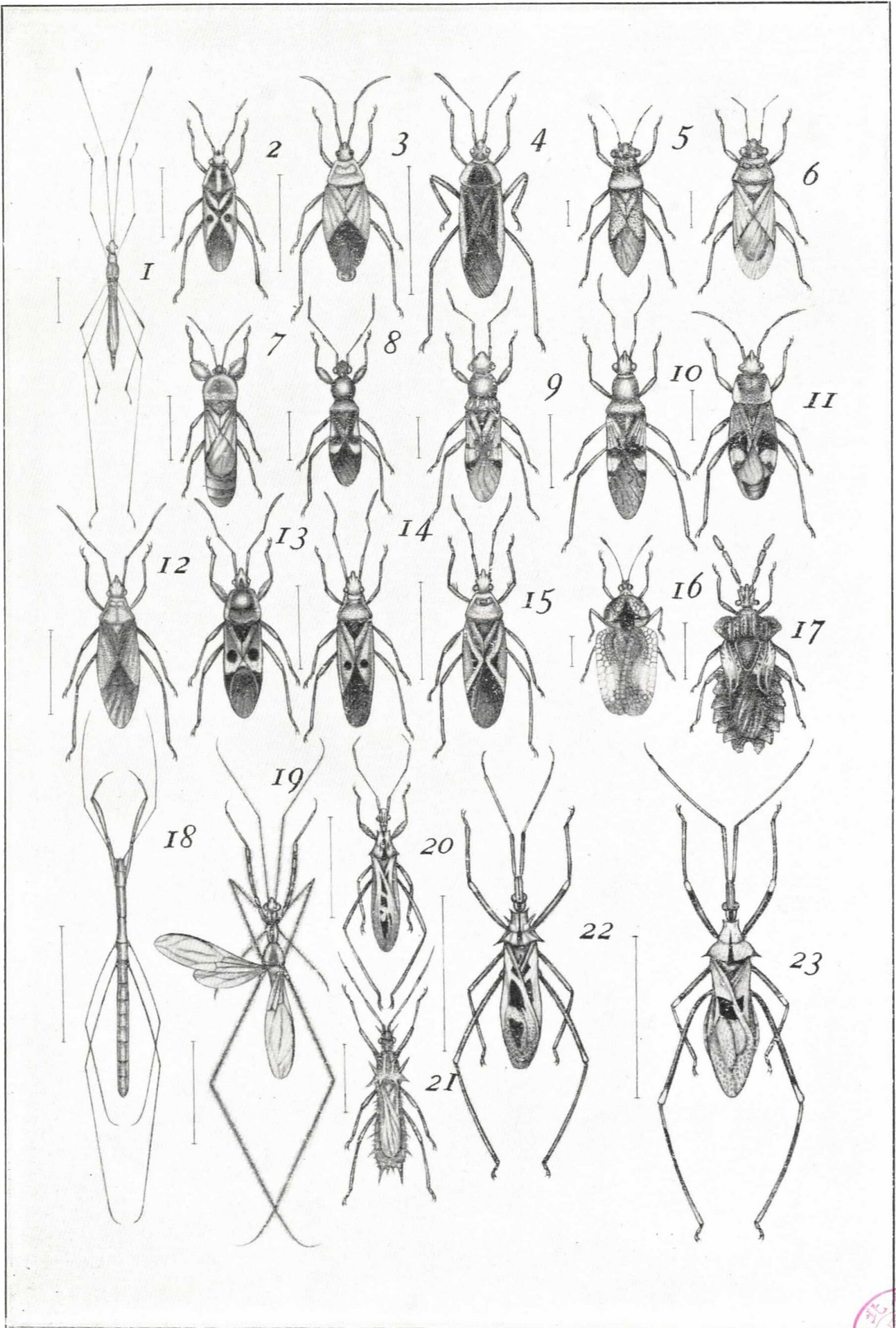
第十三圖 (PLATE XIII.)

		PAGE.
1. <i>Menida violacea</i> Motsch.	{しらほしむらさきかめむし し ♀	121
2. <i>Parastrachia fulgens</i> Dist.	べにくちぶごかめむし ♀	122
3. <i>Zicrona coerulea</i> L.	るりかめむし ♀	122
4. <i>Audinetia spinidens</i> F.	いしだくちぶごかめむし ♀	123
5. <i>Canthecona furcellata</i> Wolf.	きしもふりはりかめむし ♀	123
9. <i>Urochela jozankeana</i> Mats.	よつもんかめむし ♀	124
7. <i>Sastragela scutellata</i> Scott.	もんきつのかめむし ♀	125
8. <i>Rhynchochoris humeralis</i> Thunb.	みかんごげかめむし ♀	126
9. <i>Acanthosoma rubicorne</i> Mats.	つのおかかめむし ♂	126
10. <i>Acanthosoma distinctum</i> Dall.	せあかつのかめむし ♀	127
11. <i>Acanthosoma giganteum</i> Mats.	おほつのかめむし ♀	128
12. <i>Derepteryx obscurata</i> Stål.	つきはへりかめむし ♀	129
13. <i>Homoeocerus shokaensis</i> Mats.	しょうかへりかめむし ♀	130
14. <i>Uhleriella marginata</i> Uhl.	おほくもへりかめむし ♀	131
15. <i>Iwasakia biguttata</i> Mats.	いはさきへりかめむし ♀	132
16. <i>Iwasakia formosana</i> Mats.	たいわんへりかめむし ♀	133
17. <i>Pachycephalus opacus</i> Uhl.	つまきへりかめむし ♀	135
18. <i>Leptoglossus membranaceus</i> F.	あしびろへりかめむし ♀	135
19. <i>Notobitus meleagris</i> F.	ひげながへりかめむし ♂	136
20. <i>Metacletus bivittatus</i> Mats.	ふたすちはりかめむし ♀	137
21. <i>Anoprocnemis curvipes</i> F.	あしぶごへりかめむし ♀	138



第十四圖 (PLATE XIV.)

		PAGE.
1. <i>Yemma exilis</i> Horv.	いとかめむし ♀	139
2. <i>Lygaeus hospes</i> F.	こまだらかめむし ♀	140
3. <i>Antilochus coqueberti</i> F.	べになががめむし ♂	140
4. <i>Lygaeus flavomarginatus</i> Mats.	きべりなががめむし ♀	141
5. <i>Lygaesoma flavipes</i> Mats.	ながめたかがいだ ♀	142
6. <i>Nysius plebejus</i> Dist.	ひめめたかがいだ ♀	143
7. <i>Macropes major</i> Mats.	おほこばねがいだ ♀	143
8. <i>Pamera harimaensis</i> Mats.	はりまがいた ♀	144
9. <i>Pamera pallicornis</i> Dall.	よつぼしがいた ♀	146
10. <i>Pamera nietneri</i> Dohrn.	もんくろがいた ♀	147
11. <i>Aphanus albomaculatus</i> Scott.	しろほしがいた ♀	147
12. <i>Lygaeus koshunensis</i> Mats.	こうしゆんなががめむし ♂	148
13. <i>Physopelta gutta</i> Burm.	あかぎほしかめむし ♀	149
14. <i>Dysdercus cingulatus</i> F.	あかほしかめむし ♀	150
15. <i>Dysdercus crucifer</i> Mats.	しろじゆうじかめむし ♀	150
16. <i>Monanthia conchata</i> Horv.	えぐりぐんばいむし ♀	151
17. <i>Aradus iguchii</i> Mats.	いぐちひらたかめむし ♀	152
18. <i>Emesa mercida</i> Uhl.	あしながさしがめ ♀	153
19. <i>Orthunaga bivittata</i> Uhl.	ごみあしながさしがめ ♀	154
20. <i>Oncocephalus notatus</i> Klug.	とびいろさしがめ ♂	154
21. <i>Acanthodesma perarmatum</i> Uhl.	とげさしがめ ♀	155
22. <i>Metatiarodes maculatus</i> Mats.	くろぼしさしがめ ♀	156
23. <i>Metatiarodes apicals</i> Mats.	{おほくろぼしとげさしが め ♀	157 158



第十五圖 (PLATE XV.)

		PAGE.
1. <i>Ptilocerus inmitus</i> Uhl.	みづさしがめ ♀	159
2. <i>Centrocnemis formosana</i> Mats.	はらびろとげさしがめ ♀	159
3. <i>Velinoides dilatatus</i> Mats.	はねなしさしがめ ♂	161
4. <i>Conorhinus rubrofasciatus</i> Deg.	あかすぢさしがめ ♂	163
5. <i>Pirates yayeyamae</i> Mats.	やへやまさしがめ ♀	163
6. <i>Ectomocoris biguttulus</i> Stål.	きぼしさしがめ	164
7. <i>Labidocoris insignis</i> Dist.	くろばあかさしがめ ♂	165
8. <i>Ectrychotes andreae</i> Thunb.	あかへりるりさしがめ ♂	166
9. <i>Ectrychotes iguchii</i> Mats.	いぐちあかさしがめ ♂	166
10. <i>Ectrychotes haematogaster</i> Burm.	びろうごさしがめ ♀	167
11. <i>Ectrychotes okinawaensis</i> Mats.	をきなははらあかさしがめ ♀	168
12. <i>Haematoloecha nigricollis</i> Mats.	くびぐろあかさしがめ ♂	169
13. <i>Sphedanolestes impressicollis</i> Stål.	しまさしがめ ♂	170
14. <i>Harpactor fuscipes</i> F.	なかぐろあかさしがめ ♂	170
15. <i>Harpactor ornatus</i> Uhl.	あかへりさしがめ ♀	171
16. <i>Harpactor flavinotum</i> Mats.	せうすさしがめ ♀	171
17. <i>Velinus nodipes</i> Uhl.	やにさしがめ ♀	172
18. <i>Isyndus obscurus</i> Stål.	おほとびいろさしがめ ♀	173
19. <i>Cydnocoris russatus</i> Stål.	あかさしがめ ♀	174
20. <i>Endochus marginalis</i> Mats.	くろひげながさしがめ ♀	174
21. <i>Euagoroides coccineus</i> Mats.	べにさしがめ ♀	175
22. <i>Nabis (Reduviolus) apicalis</i> Mats.	こばねまきばさしがめ ♀	176
23. <i>Nabis (Reduviolus) flavomarginata</i> } Scholz.	からふとまきばさしがめ ♀	178
24. <i>Gorpis suzukii</i> Mats.	あかまきばさしがめ ♀	179
25. <i>Lygus saundersi</i> Reut.	まだらめくらがめ ♀	180
26. <i>Calocoris rubrovittata</i> Mats.	あかすぢめくらがめ ♀	180
28. <i>Atractotomus rubrolineatus</i> Mats.	あかすぢひげぶとめくらがめ ♀	181
28. <i>Dinorhyncus dybowskyi</i> Jak.	あをくちぶとがめ ♀	183
29. <i>Tropicoris rufipes</i> L.	うすぐろくちぶとがめ ♀	183

